



LPA BOARD  
APPROVES  
DOG PARK  
CONCEPT

Cost of dog park plan developed by task force is \$50,000.

BY SUSAN THOMPSON  
Lake Panorama Times

At its Aug. 25 meeting, the Lake Panorama Association board of directors voted unanimously to allow Friends of Lake Panorama to begin raising funds for a dog park.

The idea of a dog park on LPA property has been discussed off and on for nearly a decade. In April 2019, Friends conducted a survey to gather input from LPA members on possible future projects. The Friends board met June 24, 2019, reviewed and discussed the survey results, and approved several action items.

One action item dealt with the possible development of an LPA dog park. While a dog park didn't rank as high in the survey as other projects, there was strong support from a segment of the LPA membership. For that reason, the Friends board decided to recruit volunteers to serve on a dog park task force to study location, design, costs and rules.

By early September 2019, a seven-member task force had been assembled. Julie Tibbles served as chair. Other members were Roger and Mary Hansen, Sherri Miller, Ann Appleseth and Karen Hanson. Representing Friends on the task force was board president Jan Reinicke. Susan Thompson, Friends executive director, assisted the task force.

One part of the task force's research included a 15-question online survey conducted in November 2019. About 100 people took the survey, with 75 people saying they and their guests would use a dog park. Another nine said they needed more information before deciding.

At its June 22, 2020, meeting, the Friends board received the dog park task force report and voted unanimously to endorse the project and advance the report to the LPA board. The Friends board also agreed to manage donations to this project.

The LPA board reviewed the dog park proposal at its July meeting and gave final approval at the August meeting. The cost of the dog park plan developed by the task force is \$50,000. All funds will need to be raised with support from dog park enthusiasts and dog lovers, as LPA will only be partnering with in-kind contributions such as running a water line.

If the needed funds are raised, the dog park will be located at the corner of Sage Trail and RV Road, near the east campground and across the road from holes 12 and 13 on the Lake Panorama National golf course.

A 6-foot-high chain link fence that is 650 feet long and 155 feet wide will encircle the park. There will be two sections, one for small dogs and one for large dogs, with chain link fence dividing the two areas. The property currently is planted to soybeans, so funds will be needed to improve the seedbed and establish turfgrass.

DOG PARK, PAGE 5

RAIN GARDEN AT PANORAMA  
WEST FLOURISHES

The idea of installing a demonstration rain garden first was discussed at a Friends of Lake Panorama board of directors meeting in 2016.



The purple-colored flowers on the Prairie Blazing Star attract butterflies, bees and hummingbirds. A bonus is that this plant is deer resistant.

BY SUSAN THOMPSON  
Lake Panorama Times

It's been more than three years since a rain garden was installed along the east side of the Panorama West clubhouse parking lot. Even though 2020 hasn't brought a lot of rain to Lake Panorama, the native plants in the rain garden have been putting on a show this year.

Some plants bloomed their first year in the garden, but it generally takes two to three years for native plants to hit their stride. That's because natives first establish deep root systems before substantial growth happens above ground.

A rain garden is a perennial flower garden strategically located to capture runoff from rain that falls on parking lots, roofs, driveways and yards. The idea of installing a demonstration rain garden first was discussed at a Friends of Lake Panorama board of directors meeting in 2016.

Derek Namanny, an urban conservationist with the Iowa Department of Agriculture and Land Stewardship, began working with the group that fall. He visited Lake Panorama to look for possible rain garden locations and found an

RAIN GARDEN, PAGE 4



An informational sign explains how rain gardens help improve water quality. The Panorama West rain garden features 170 native plants in a dozen different varieties. The sign shows the names and photos of eight varieties. Details on all 12 plant varieties are available on the Friends of Lake Panorama website.

Protect: 1 Your car.  
2 Your house.  
3 Your bank account.

Save an average of \$894.\*

Protect yourself with America's #1 car and home insurance company.\*\*

Like a good neighbor, State Farm is there.®

CALL ME TODAY.

State Farm

\*Average annual household savings based on national 2016 survey of new policyholders who reported savings by switching to State Farm.  
\*\*Based on A.M. Best written premium.

State Farm Mutual Automobile Insurance Company, State Farm Indemnity Company, Bloomington, IL  
State Farm Fire and Casualty Company, State Farm General Insurance Company, Bloomington, IL,  
State Farm Florida Insurance Company, Winter Haven, FL, State Farm Lloyds, Dallas, TX

Robert Carr Insurance Agcy Inc  
Robert Carr, Agent  
111 S. 4th Street  
Guthrie Center, IA 50115  
Bus: 641-332-2263

ON THE LAKE

So, where do you call home?

By SHANE GOODMAN  
Editor and Publisher

We have all been in social settings with others we don't know. These can be awkward, but one of the easiest ice breakers I have found is to find out where people call home. Inevitably, I can find some type of connection from there. And in those discussions with folks at Lake Panorama, I have often heard the following questions: How many property owners have permanent residences here? And where do those who don't call home?

Many have speculated with responses all over the board, but I wanted to do some research and find out the real answers for myself. I thought you might be interested, too.

The database I used is the mailing list that we send Lake Panorama Times out to each month. Since we mail to all property owners on the lake, it should very closely match where people call home. Prior to each and every mailing, we update it with additions, deletions and changes, so it is quite accurate. We also mail to a few businesses and a handful of others, but, by and large, it is sent to lake property owners located in about 220 different communities. It is also important to note that this publication is mailed to the permanent residence that is on record for each property owner. So if your lake property is your designated permanent address,

then a copy of this publication is mailed to you there. If you have a home in Des Moines, or Sioux City or Yale listed as your permanent address, then a copy is mailed to that address.

For this current issue, we mailed out 1,703 copies. Of those, the most were mailed to a Panora address, representing 34.1 percent of all copies. So, in theory, about one-third of all property owners live on the lake year round, or at least name their lake address as their permanent residence of record.

The community with the next greatest number of mailings is West Des Moines, with about 6.4 percent of the total. Des Moines follows with 5.5 percent with Urbandale closely behind at 5.0 percent. Clive, Adel, Johnston and Waukee are all next with about 2.5 percent each. After that is Ankeny at 2.3 percent with Guthrie Center following at 2.2 percent.

Jefferson, Grimes, Omaha, Carroll, Ames, Perry and Atlantic are all next and have between 1-2 percent of the mailings each. The remainder are sent to more than 200 various communities, with each totaling less than 1 percent.

Now that's one way to answer this question, but there are seemingly two sides to every coin. And as a former boss of mine used to say, figures lie and liars figure.

Another way to answer the permanent residence question is to use data only on those with actual homes on the lake. According to



Shane Goodman

Lake Panorama Association, there are approximately 1,125 homeowners with the remaining 600 or so members having undeveloped lots. With this in mind, the percent of people who consider their lake home as their primary residence may be closer to 50 percent. And, of course, during the summer almost 100 percent of the homes are in use at some point.

So, where do Lake Panorama property owners call home? Regardless of how you slice or dice the data, the answer is clearly at Lake Panorama, with Des Moines and its western suburbs making up the bulk of the remainder.

Now we know. And this will all make for a great ice breaker at your next social event.

As always, thanks for reading. ■

PANORAMA SOCCER CLUB  
BENEFITS FROM IOWA  
SOCCER'S SHARE THE LOVE



Jenny Wood, Associate Director of Iowa Soccer; Kellie Prescott, Secretary & Coach of Panorama Soccer Club; Chris Carlson, Treasurer, Director of Refs & Coach of Panorama Soccer Club; and Brandon Waddle, Registrar & Coach of Panorama Soccer Club.

Iowa Soccer's Share the Love, Powered by Score Sports is a new initiative and partnership designed to help the game be more accessible to communities that can truly benefit from some love. With the support of an equipment partner, the Share the Love, Powered by Score Sports program will help others in a tangible way. The partnership agreement between Iowa Soccer and Score Sports spans three years: 2019-2020, 2020-2021 and 2021-2022.

The Panorama Soccer Club was named one of nine recipients of the first wave of "Share the Love" initiative.

The program has been established to benefit communities/groups across Iowa that have little to no means to acquire soccer equipment. Through the program, Iowa Soccer will have a process to identify the areas where

"love" is needed and with local leaders, prioritize needs and make final equipment decisions. Score Sports is the equipment partner providing the equipment through an in-kind partnership with Iowa Soccer.

"We are very fortunate to have opportunities like this, especially during this pandemic," said Jaime Waddle, president of the Panorama Soccer Club. "Not having a spring 2020 season has hurt us financially, like everyone else. So receiving new balls, pumps, cones, bags, flags and pinnies couldn't have come at a better time."

Waddle says Iowa Soccer also played an integral role in the new soccer complex, with funding a \$10,000 grant.

"Our club wouldn't be at the level we are today without Iowa Soccer and their staff," she said. "We are playing our first season at the new complex this fall. ■



## Springbrook

FAMILY DENTISTRY

Daniel A. Nelson, DDS  
641.332.3100

214 State Street, Guthrie Center, IA 50115

Now accepting patients!



## Culligan

CLEAN WATER HOME

Free Water Tests and Estimates.  
Prevent water problems with Culligan water treatment

**Rental or Purchase**  
Steve 515-478-0600



# BAKER

## Heating & Cooling

Call 515-559-6778  
or 515-833-2052

### A TEAM THAT CAN HELP YOU



CALL US TODAY! 515-993-3332



## PAUL'S AAA

### PEST CONTROL, INC.

www.PaulsAAAPestControl.com  
PaulsPestControl@yahoo.com



## TACKLE THOSE HOME PROJECTS BEFORE WINTER!

- PAINTING - INTERIOR & EXTERIOR
- DECK STAINING
- WALL COVERING & REMOVAL
- POWER WASHING - CLEAN THE MOLD OFF YOUR HOUSE & DOCKS
- DRYWALL REPAIR
- VERY NEAT & CLEAN!

**2-PICKY**  
SUPERIOR CRAFTSMANSHIP  
FOR THE LONGEVITY OF THE PAINT!



## SUNDEEN

### DECORATING

CALL TODAY FOR A FREE ESTIMATE!  
Wade Sundeen  
515.238.9233  
twopickyman@netins.net



## YOLI BETTER BODY SYSTEM

At Yoli, we transform lives!  
Physically, Emotionally, and Financially!

- 5 immune building products
- GMP Certified
- Health gain system  
- weight loss is just a side effect!
- Focus on your nutrition  
- I can help!
- Substitute, not sacrifice

Contact Pam Shelton today  
for a consultation!

**515-408-4224**

## OUR GOAL IS TO SET NEW STANDARDS OF QUALITY



EVERY DAY...



DREES CO.



ON EVERY JOB...



FOR EVERY CUSTOMER.



BEST SECURITY COMPANY



BEST APPLIANCE STORE



BEST ELECTRICAL CONTRACTOR



BEST PLUMBER

**Mechanical Contractor • Electrical Contractor • HVACR Sales & Service**  
Heating • Cooling • Plumbing • Electrical • Sheet Metal • Appliances  
Design Build Engineering • Temperature Controls • Refrigeration • Security & Fire Alarm Systems

609 N. Carroll St., Carroll • (712) 792-2863  
dreesco.com

# LINDEN

# STORAGE

## BOAT & RV



Just 10 minutes from Panora!

**(515) 505-4771**

# PANORAMA WEST 2-GAL TOURNAMENT WELCOMES 60 PLAYERS

BY SUSAN THOMPSON  
*Lake Panorama Times*

The Panorama West women's golf league hosted a 2-gal best-shot tournament Tuesday, Aug. 11. A total of 30 teams participated, with players from Panora, Guthrie Center, Jefferson, Audubon and surrounding communities. The tournament theme was "Golf Like an Egyptian."

The theme was carried out with attire worn by committee members, plus three husbands of committee members. A one-stroke penalty was assessed to any team hitting the camel on the fourth hole. Amy Lawton of Dallas Center won the longest drive contest, which involved hitting a marshmallow off a tee. Karen Bump won the putting contest on the practice green by putting two balls into the pyramid.

Cash prizes were awarded to the top three teams in five flights. Winners of the championship flight were Carla Fitzgerald and Susan Thompson, with a two-under-par score of 25. Second place went to Karen Bump and Kylee Boettcher with a 27. Connie Hamilton and Nancy Schefers placed third with a 29.

The tournament was followed by a luncheon at the Panorama West Clubhouse with box lunches catered by Lake Panorama National served to golfers on the clubhouse deck and in the community room.

Tournament committee members were Emily Spradling, MaryKay O'Grady, Coop Rickert, Nancy Clawson and Julie Wykoff. ■



Three husbands of tournament committee members assisted on the course, left to right, Jim Spradling, Mike O'Grady and Tim Rickert. Joining them before the tournament began were teammates Jackie Wellik and Linda Johnson, who took the "Golf Like an Egyptian" theme to heart by wearing gold tops and headdresses.



Carla Fitzgerald and Susan Thompson won the championship flight in the Panorama West 2-gal golf tournament Aug. 11 with a two-under-par score of 25. Shown left to right are Michael Kleinwolterink, LPN pro shop manager; Thompson; Fitzgerald; and Gary Babcock, LPN head golf professional.

## LPN Women's Solheim results



Forty women played in the 2020 Solheim tournament at Lake Panorama National on Aug. 22, with two teams represented by captains Lisa Grossman and Sue Greiner. After 18 holes of competition, each team had earned 15 points, and the event was declared a tie. Captains Grossman and Greiner are shown in the middle holding the event flag, surrounded by their team members. Photo by Michael Kleinwolterink.

The LPN women's Solheim tournament was held Aug. 21-22. Team Captains Sue Greiner and Lisa Grossman used the theme "The Good, The Bad, The Lucky" for the event. Team pairings were announced after the regular Thursday women's golf

league Aug. 20.

A team shootout was held Friday evening, with the winning team consisting of Kathy DeLucca, Karen Hanson, Cindy Sanger, Emily Spradling and Susan Thompson. The shootout was followed by appetizers and Blackjack

card games in the conference center.

Forty players participated in the team competition Saturday, with two-person teams competing using three different formats over 18 holes — match play, alternate shot and better ball. Three points

were up for grabs in each foursome, with one point for each six-hole format. When all the teams were in, the two teams were tied at 15 points each. After discussion, the team captains agreed to stick with a tie rather than a sudden-death playoff between

the two captains.

Eight two-person teams chosen based on their scores from Thursday's league play competed in a shootout after the Solheim tournament,

with Danna Krambeer and Shanell Wager winning that event. Dinner followed, and the 2021 captains of Deb McDermott and Tricia Steffen were introduced. ■

## RECIPE

My husband, publisher of this paper, has been asking me to provide a regular recipe for the Lake Panorama Times for awhile now, so I thought I would share one this issue. Fall is my second favorite season (after summer, of course!) I love watching the leaves change, enjoying a good, easy, hot meal and cozying up to an evening bonfire. Nothing beats mac and cheese with homemade muffins, fresh out of the oven. This recipe is a little different than your traditional mac and cheese and I encourage you to try it. Enjoy!

— Jolene Goodman

### Mini pierogy mac 'n' cheese skillet

Prep time: 10 minutes  
Total time: 35 minutes  
Servings: 4

#### Ingredients

2 tablespoons olive oil, divided  
1 box Mrs. T's Mini 4 Cheese Medley Pierogies  
2 scallions, thinly sliced, white and green parts separated  
1 cup broccoli florets  
1 small red pepper, diced  
1 small yellow squash, diced  
1 tablespoon flour  
1/2 teaspoon kosher salt  
1/4 teaspoon black pepper  
1 1/4 cups heavy cream  
1 ounce cream cheese, cubed  
1 cup shredded white cheddar cheese

#### Directions

In large skillet over medium heat, add 1 tablespoon olive oil and saute pierogies until golden brown, about six minutes per side. Remove pierogies from pan.

Add remaining olive oil to skillet. Saute white parts of scallions over medium-high heat until fragrant and translucent, about two minutes.

Add broccoli, peppers and squash. Cook 5-8 minutes until tender but still crisp.

Remove veggies from pan.

In same skillet, whisk flour, salt, pepper and heavy cream. Simmer until thickened, about 2-3 minutes. Add cream cheese, stirring until melted.

Remove skillet from heat. Stir in cheddar cheese until sauce is melted and smooth. Add pierogies and veggies back to pan, gently stirring until coated.

Top with green scallions before serving.



Sponsored by Guthrie County Arts Council

# ART IN THE VILLAGE SQUARE

## FALL FESTIVAL

LOCAL ARTISTS AND MUSICIANS

OCTOBER 3  
10 AM - 5 PM

PANORA CITY SQUARE  
115 W MAIN ST. PANORA, IA 50216

FOR MORE INFORMATION  
Visit: [guthriecountyartsCouncil.org](http://guthriecountyartsCouncil.org)

MUSIC - HANDMADE - ART

Bring a lawn chair & stay awhile!

IN CASE OF RAIN, FESTIVAL WILL BE HELD IN THE VETERAN'S AUDITORIUM

# RAIN GARDEN

FROM PAGE 1

existing water drain on the east side of the Panorama West parking lot that receives rainfall runoff. Namanny designed a garden that covers 500 square feet surrounding this drain.

“Rain gardens help reduce surface runoff and protect water quality,” he said. “Runoff that travels to a rain garden is temporarily ponded, but it doesn’t stay ponded for long. Plants in the garden use the water, pollutants are filtered out, and the water percolates down through the soil rather than running off into the lake and nearby streams and rivers.”

The cost of this project was about \$2,500. In December 2016, the Guthrie County Soil and Water Conservation District Commissioners approved an application from Friends of Lake Panorama for \$1,250 in cost-share funding for the rain garden. These funds were made available through Iowa’s Resource Enhancement and Protection program, better known as REAP.

The Lake Panorama Association provided site preparation assistance. Excavation was done before layers of rock, sand and soil were covered with a hardwood mulch. A biodegradable erosion blanket was placed over the mulch to keep it from washing away. Holes were cut in the blanket, and the plants placed and watered by volunteers.

In 2018, large rocks were placed around the three elevated sides of the garden to help reduce weeds and protect the garden. Smaller river rock was placed along the west side.

An informational sign installed nearby explains how rain gardens help improve water quality. The Panorama West rain garden features 170 native plants in a dozen different varieties, that bloom at various times from spring to late fall. The sign shows the names and photos of eight varieties. Details on all 12 plant varieties are available on the Friends of Lake Panorama website at [friendsoflakepanorama.org](http://friendsoflakepanorama.org). ■



The tall plants with white plumes along the east side of the rain garden are Culver’s Root. This plant blooms in July and August, and stands three to six feet tall. Along the rock wall are several volunteer common milkweed plants, that have been left in place to support monarch butterflies.



This Red Milkweed plant in the Panorama West rain garden is popular with pollinators, as well as butterflies like this Painted Lady.

## Auditor Dani Fink announces campaign ahead of November election

Dani Fink of Panora announces her campaign for Guthrie County Auditor in the Nov. 3, 2020 election, and promises to keep the residents and taxpayers of Guthrie County as her first priority.

“I am dedicated to working for the people of Guthrie County and continuing to serve them with integrity and honesty,” said Fink. “As Guthrie County Auditor, I have streamlined our election process, updated voting equipment and made the entire process much more voter friendly. Elections are only one portion of my responsibilities as Auditor, although they are the most discussed.”

As the current Guthrie County Auditor, Fink has taken on the role as Commissioner of Elections for Guthrie County and is certified as an Iowa State Elections Administrator — a requirement she must maintain with regular continuing education provided by the Secretary of State’s office. Beyond elections, Fink is also charged with preparing and certifying tax levies, maintaining accurate financial records county-wide and managing real estate transfer records for Guthrie County.

“Elections are a large part of being County Auditor, but they are not the only important aspect of this role. Since being appointed Auditor on May 12, 2020, I have taken on the responsibility as the County budget director, Clerk to the Board of Supervisors, overseeing County payroll and accounts payable,” said Fink. “I have a proven track record and am proud to hold the title as



Dani Fink

your Guthrie County Auditor. I look forward to continuing to work for you.”

Fink has been employed with the Guthrie County Auditor’s office since April 2017 and served as the Elections Deputy until she was appointed as County Auditor by the Guthrie County Board of Supervisors in May of this year.

Fink resides in rural Guthrie County and is community-centered in her personal life, holding previous positions on the Guthrie County Hospital Board and as a Panorama Community School Booster Club officer. Fink enjoys spending time with family and friends as well as her partner, Jeremy, and their two dogs, Ella and Rip. ■

# LAKE PANORAMA BARGE SERVICE

**OFFICE: 641-755-3351**  
**DANNY’S CELL: 515-971-0226**  
**lpbargo@att.net**

Offering

**ShoreStation**  
BOAT HOISTS

**Make Us Your *First* Call!**

*Call Larry!*

**Van’s Tree Tech**  
**Get your trees checked out this Spring!**  
**515-523-1993**  
**c: 515-720-2874**  
**treetechn**  
[www.vanstreetech.com](http://www.vanstreetech.com)

Deep Root Fertilization • Insect and Disease Control

**GIVE US A CALL, I HANDLE THEM ALL!**

**DON’T GET BUGGED THIS SUMMER!**

Locally owned & operated • Free estimates & no contracts  
Licensed & Insured • All work is guaranteed  
Products used are people & pet friendly

**CYCLONE**  
Pest Management

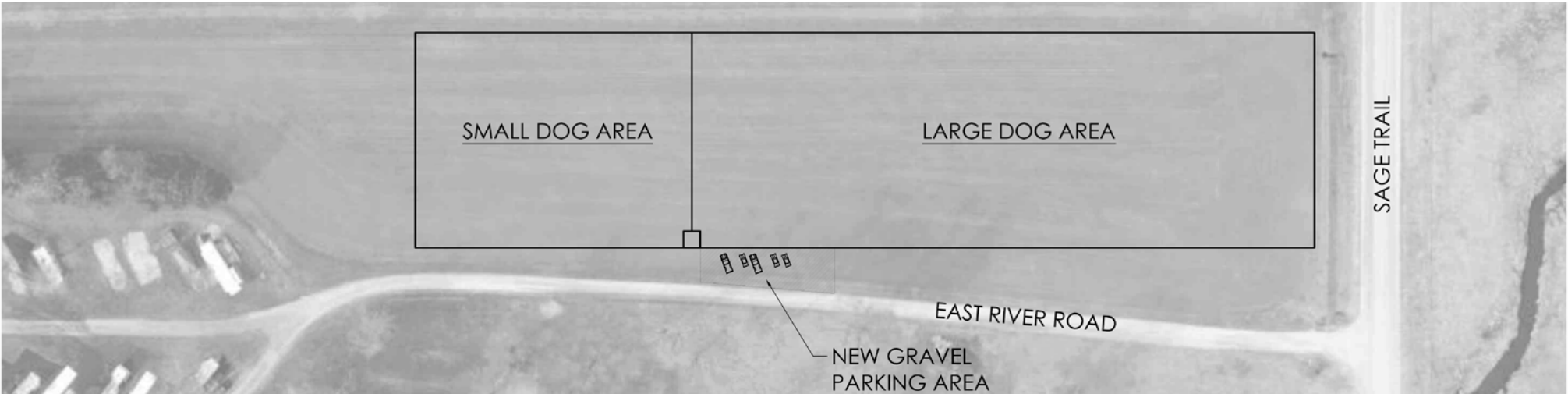
Panora, IA

**Dale Hochreiter: 641-757-0605 • Nick Rude: 515-664-1646**

I also offer quality mosquito, tick, and flea control for your yard or outdoor space. Perfect for your next outdoor party or gathering

DOG PARK

FROM PAGE 1



This graphic shows the proposed Lake Panorama dog park. If enough funds are raised for the park, it will be located at the corner of Sage Trail and RV Road, near the east campground. The layout plan was donated by Jim Tometich, who lives on Helen’s Cove.

Playgrounds continue to be Friends’ priority project

BY SUSAN THOMPSON  
Lake Panorama Times

While the LPA board of directors recently approved fundraising for a dog park, the Friends of Lake Panorama’s priority project will remain new playground equipment at Boulder and Shady beaches until that \$70,000 goal has been reached.

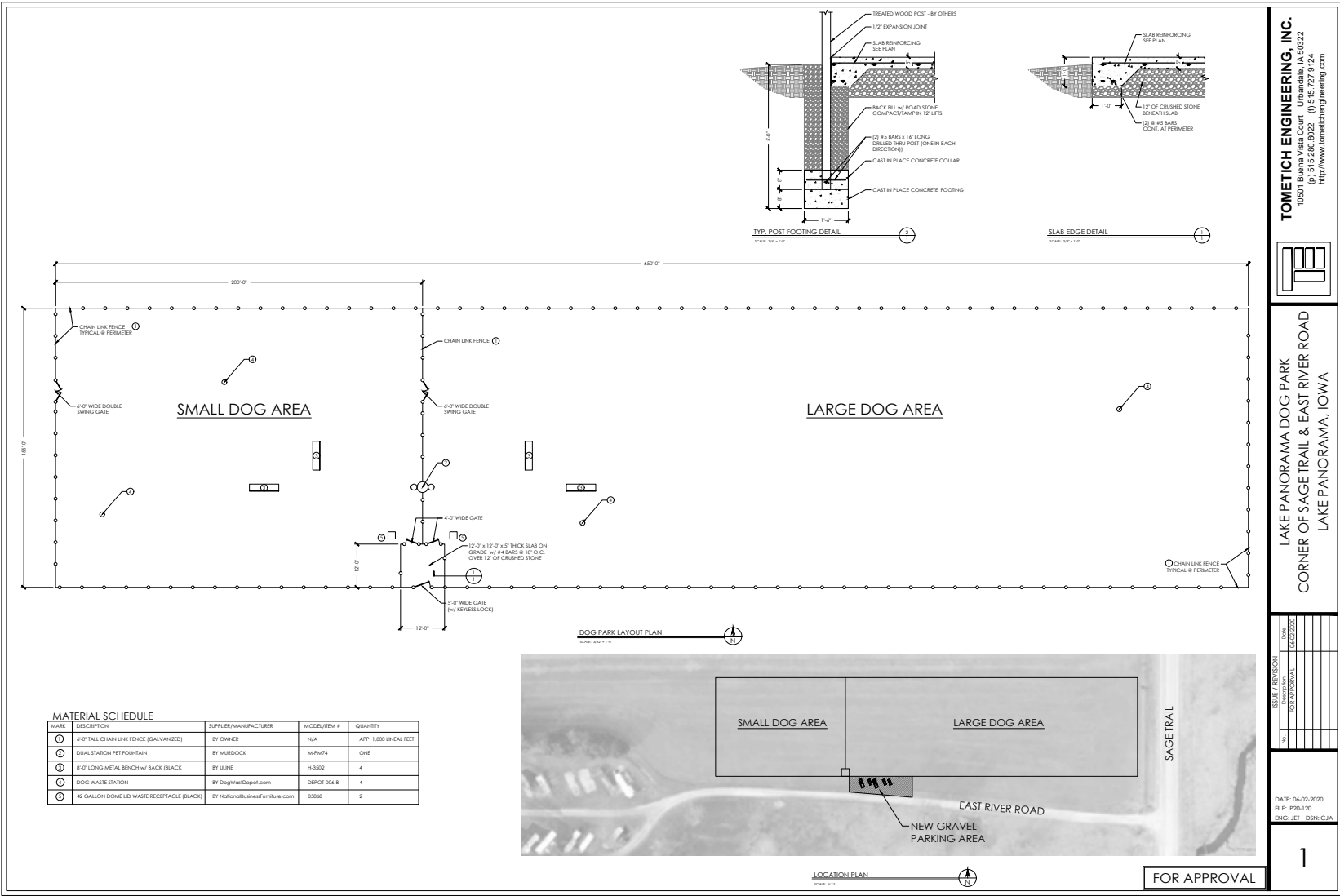
The Aug. 1 Beach Ball raised nearly \$30,000, which was a huge boost to the playground project. There already was \$25,000 in the bank received from donors since this fundraising effort began in November 2019.

The Beach Ball increased visibility of the playground project, with another \$3,000 in direct donations received since that event. Another \$12,000 is needed.

In late July, the Friends board of directors voted to order the play equipment for Shady Beach. Once the remaining \$12,000 is raised, the Boulder Beach equipment will be ordered. The Friends board hopes to reach this goal before the end of 2020, since a price increase on the playground equipment is scheduled for Jan. 1, 2021.

All donations are tax-deductible. Checks made payable to Friends of Lake Panorama can be mailed to P.O. Box 488, Panora, Iowa, 50216. Donors should include a note or designate on the check the funds are to be used for the playgrounds.

Donors of \$500 or more will be recognized on signs erected near both playgrounds and on the Friends website. More information about the playgrounds and other ways to donate is available at [www.friendsoflakepanorama.org](http://www.friendsoflakepanorama.org). ■



A single entrance will be protected by a keyless lock. Once inside this gate, users can choose a gate to either the large dog area or the small dog area. A concrete slab at the entrance will be covered with a steel roof structure. Crushed rock will be used to create a 5-foot-wide walking path along and under the fencing to provide a weed barrier and keep dogs from

digging. A small gravel parking lot will be adjacent to the park. Amenities inside the park fence included in the \$50,000 cost estimate are four benches, four stations where bags for dog waste would be available, and two domed waste receptacles. A dual station pet fountain placed in the fence line between the two sections would make it pos-

sible for dogs to access drinking water from either side. The facility will be open to LPA members and their guests. The entry code will be available to members and guests of members by calling LPA security or the LPA office, and will be changed periodically. Signs will be posted for responsible use, with volunteers helping decide on these rules as fun-

draising is underway. One rule already determined is all dogs must wear a tag showing they are up to date with state-required rabies vaccinations. Because Friends of Lake Panorama is a 501(c) 3 non-profit charity, all donations are tax deductible. Donors of at least \$500 will be recognized on a sign at the dog park, plus on the Friends

website. Checks made payable to Friends of Lake Panorama can be mailed to P.O. Box 488, Panora, Iowa, 50216. Donors should include a note or designate on the check funds are to be used for the dog park. More information about the dog park and other donation options are available at [www.friendsoflakepanorama.org](http://www.friendsoflakepanorama.org). ■

**Want to reach Lake Panorama residents?**

Contact me today!

**Stormy Baker**  
cell: 515-822-2531  
stormy@iowalivingmagazines.com

**REESE TREE CARE**  
Old Masters - Neighborhood Services

Licensed, Insured and Reasonable

**BILL REESE - Owner**  
515-943-0544 • 641-755-2140  
breesetrees77@gmail.com  
ISA Certified Arborist  
ISA Certified Utility Specialist  
#MW3944AU

**EXPERT, PROFESSIONAL SERVICES**  
Complete groundskeeping & Property Management

- Trees
- Shrubs
- Hedges
- Lawns
- Landscape

Over 35 years of education, art, safety, training and excellence in the green industry at your service.

**WE TREAT FOR THE EMERALD ASH BORER**

**Design • Installation • Construction**

*"More than a shovel and a truck."*  
**We have the equipment to do the job right!**

- Retaining walls • Walkways • Patios
- Seeding • Sodding • Grading
- Plant materials • Planting • Pruning
- Landscape Material • Affordable Quality
- Insured

*"Don't pay too much for too little"*

**GREENSPIRE LANDSCAPING**

Over 25 years of dependable service

Phone Dan 641-439-2482  
or 641-757-1497.  
Please leave a message.

**EXPRESS YOUR PERSONALITY!**  
Let the Professionals Take Care Of You and Your Eyes with Quality Eye Care and Eye Wear!

**Eye Care Associates**

Cassie Martinson, O.D. • James Koch, O.D.

**102 E. Main • Panora**  
**641-755-3699**

**LET US DO THE COOKING FOR YOU!**

**CHESTER'S**

Great Tasting Fresh Fried Chicken - Cooked to perfection with a unique taste and style. A family recipe and process that's been successful for over 50 years.

Available at your Panora

**Hometown foods**

601 E Main St • Panora, IA  
(641) 755-2213

**GRUBER**  
CONCRETE CONSTRUCTION

**QUALITY WORK AT REASONABLE RATES!**

**Flat Work - Skidsteer Work Replacement Work**

**Call Tom Today**  
**515-210-4515**

Insured  
Serving Lake Panorama & surrounding communities

# New food and beverage manager at LPN

Blake Wenzel brings a wealth of experience in the hospitality industry to the LPN.

BY SUSAN THOMPSON  
*Lake Panorama Times*

That new guy working at Lake Panorama National in the Links and at special events is Blake Wenzel, who joined the staff in late July as the LPN food and beverage manager. A native of Mt. Pleasant, Wenzel is a graduate of the two-year culinary arts program at Indian Hills Community College in Ottumwa.

Royce Shaffer, LPN operations manager, says he's happy to welcome Wenzel to the LPN staff.

"Blake comes to us with a ton of industry knowledge. Combine that with his energetic personality, and I am excited to see where he can take our food and beverage department," Shaffer says. "I look forward to working with Blake and creating a restaurant that provides consistently good food and service, where Lake Panorama property owners will want to visit again and again."

Wenzel, who reports to Shaffer, now oversees LPN's kitchen and restaurant operations and schedules all front-of-house employees. Brent Gaffney, LPN's head chef since February 2019, schedules the kitchen staff. Gaffney and Kashley Sneller, who has managed the Links for the past year, will work with Wenzel to pursue opportunities for growing LPN's business. This fall Sneller is managing Spikes. During the

off-season, she will move into the restaurant as a bartender and server.

Wenzel has worked as a sous chef, chef, front-of-house manager and more at a number of well-known restaurants in central Iowa. He worked in the kitchen at the Greenbriar in Johnston before being promoted to the front-of-house manager.

"That's where I started to really learn and enjoy the hospitality aspect of this industry," he says.

The Trostel family, which owns the Greenbriar, opened Chips in Ankeny, with Wenzel helping get it underway. He also helped get Trostel's Dish in West Des Moines established. Later he worked as sous chef at the popular Centro in downtown Des Moines, where he says he learned to place even greater focus on hospitality and a quality experience for diners.

In 2008, Wenzel was recruited by Bruce Gerleman to help launch the first Jettho's BBQ near Drake University.

"That was a neat challenge, being involved in the development of what was a relatively new concept in Des Moines — a sports bar that featured barbecue," he says. "It was fun to see that business grow into a nationally recognized brand."

Next Wenzel spent time in Ames as a personal chef for a company called Greek House Chef. The company signed contracts with fraternities and sororities to

provide three meals a day. The meal preparation was done in Greek houses that had larger kitchens, with food delivered to houses with small kitchens.

"This was both a catering operation and an opportunity to really get to know the people eating what I was cooking," Wenzel says. "I was used to being in restaurants where you might get feedback from some diners. But now I was learning the names of my diners, their likes and dislikes, their food allergies. It gave me a whole new respect for home cooking."

Wenzel and a partner opened a restaurant called Guru BBQ in Des Moines, which later closed. His next stop was the Range Grill & Golf in Urbandale. The facility has six golf simulators, plus a restaurant that offers a wide variety of dishes, including some featuring wild game. Wenzel helped develop a mixology bar program, creating an extensive bar menu that includes specialty cocktails, draft beer, wine and dessert.

Most recently he was at Echo Valley Country Club near Norwalk, assisting in all aspects of that operation, including special events and golf outings.

"I was drawn to this position at Lake Panorama National because there are a lot of moving parts," Wenzel says. "There is the restaurant, golf outings for both members and non-members, special events in the

banquet room, people at the pool wanting lunch. I like to be active throughout the day, and that's certainly possible here."

In his new position, Wenzel says he's looking for ways to improve the experience of LPN guests.

"I tell the servers our guests chose to come here, so we need to do everything possible to make their experience the best one possible," he says. "We need to take the blinders off and look at all aspects of the operation — see the big picture, have fun and help our guests have a good, consistent experience."

Wenzel says there are challenges, but through his previous jobs he's seen and dealt with many of the same challenges, so he feels prepared to do that here.

"I couldn't be more excited about this opportunity," he says. "I am passionate about my career in the hospitality industry, and the things I'm doing at the LPN are right in my wheelhouse. I like to have fun while I'm working, and I hope that will create a ripple effect."

Wenzel met his wife Shelly on the first day of culinary school in Ottumwa and says they've been together ever since. They live on 10 acres they purchased between Woodward and Bouton. Shelly is the executive chef at Gilroy's in West Des Moines. They have a 2-year-old son, Malcolm Dean.

Wenzel says LPN mem-



Blake Wenzel has joined Lake Panorama National as the operation's food and beverage manager. He says his main goal is to improve the guest experience for LPN members and non-members.

bers have been welcoming to him.

"I really like it here. I can see there is a great group of members, and I love their friendly attitudes. The LPN has a lot of great things happening," he says. "I hope to bring a little more professional, yet relaxed and approachable atmosphere to what's already here."

Current restrictions caused by the COVID-19 pandemic make things more difficult for restaurants, yet Wenzel has adopted a positive attitude.

"Out of respect for our guests, it's important we adhere to CDC guidelines," he says. "We're really part of the health care profession now, since we're so involved in helping protect our guests' lives."

Wenzel says the pandemic

has caused the hospitality industry to take a step back and sharpen its focus.

"This has really shone a light on every action we take," he says. "For instance, how salt and pepper shakers should be handled. What other small details do we need to consider to make everyone's life better?"

Wenzel offers ideas on things he hopes to implement once there are fewer CDC restrictions on how the restaurant can be arranged.

"I really like doing theme dinners, offering foods paired with either beer or wine, so we'll be doing more of those," he says. He also plans to find ways to "bring more energy" to the Links dining room, plus revamp the area behind the bar, reducing clutter and adding more visual interest. ■

**RAYBUBBA SORENSEN**  
votebubba.com

Your voice in the People's House!

Focusing on:

- Rural Broadband Issues
- Healthy Budget Practices
- Economic Growth &

Being Your Voice at Our Capitol

*"I am not bound to win, but I am bound to be true. I am not bound to succeed, but I am bound to live up to what light I have."*  
- Abraham Lincoln

**Now's the time to make those repairs you've been putting off.**

**Sails Boat Covers Lift Covers Pontoon Canopies and Curtains**

Quality canvas repairs for over 30 years.

**JOHN BOYT INDUSTRIAL SEWING**  
3101 JUSTIN DRIVE • URBANDALE

**515-270-7031**  
**Toll Free 1-888-667-3744**

**VENTEICHER ELECTRIC, INC.**  
HOME COMMERCIAL FARM

*Servicing Guthrie Center and Panora areas for all your electrical needs.*

**641-332-2675 OR 641-755-3638**

*25+ years experience in agricultural, commercial, residential, industrial wiring along with trenching & boom truck services.*

**SCHADE FAMILY FAVORITE POTATO SOUP**

**INGREDIENTS**

- 8-10 strips of bacon
- 1/4 cup chopped onion
- 3-4 potatoes (cut into small pieces)
- 1 1/2 cups of water
- 1/2 tsp. salt
- 1 can cream of chicken soup
- 1 cup dairy sour cream
- 1 3/4 cup milk

**DIRECTIONS**

Brown bacon crisp. Add onion and sautee for 3 minutes. Pour off fat. Add Potatoes, water, salt and pepper. Bring to boil. Cover and simmer 10-15 minutes or until potatoes are tender. Stir in soup, sour cream, and milk. Bring to serving temperature over low heat. Do not boil.

**LOOKING TO BUY OR SELL A LAKE HOUSE?**

**CALL TEAM SCHADE TO HELP FIND YOUR NEW HOME!**

**Kurt Schade**  
CRS, CNHS, Broker Associate  
(515) 208-0757  
kurt.schade@cbdsm.com  
www.kurtschade.com

**Jana Schade**  
Realtor®  
(515) 577-4565  
jana.schade@cbdsm.com  
www.kurtschade.com

**COLDWELL BANKER MID-AMERICA**

*Enjoy Fall in a new lake home!*

# Irv Gerlich Memorial Ryder Cup results

The 26th annual Irv Gerlich Memorial Ryder Cup was held Aug. 14-16 at Lake Panorama National. This event has been held every year since 1995 when it was started by Gary Soreide and Jim Scherbring.

This year 76 members of LPN participated in the event. Every year two captains are appointed by the previous year's captains. This year Dave Greiner and Teddy Hawley were the two team leaders. They drafted the two teams and established the match-ups for the competition, which took place over a three-day period.


The first day was better ball competition, the second day

was a combination of best shot and alternate shot. There were 38 individual matches the last day. The winning team was led by Captain Hawley with a close score of 39.5 to 36.5.

An employee shootout was held Friday night, with the winning team being Dave Greiner and Corey Welberg. A second shootout Saturday evening featured the best 12 net and gross scores from the Friday competition. The winner of that event was Bill Douglass and Richard Duzenberry.

Captains for the next Aug. 12-14, 2021, Irv Gerlich Memorial Ryder Cup are Jim Koch and Tristan Monaghan. ■





Coy and Meranda Gruber, children of Guthrie County REC Lineman Jeremy Gruber.

### What Powers Us: Safety on the Farm

Protect the most important thing you'll ever raise - your children. Of the leading sources of fatalities among all youth, 25% involved machinery, 17% involved motor vehicles (including ATVs) and 16% were drownings.\* Cultivate safety for your family and teach them how to be safe on the farm.

**Guthrie County REC**  
A Touchstone Energy® Cooperative

1406 State St., Guthrie Center | 888-747-2206  
guthrie-rec.coop

\*National Children's Center for Rural and Agriculture Health & Safety, 2019 Fact Sheet



## Anything dug we can handle it!

**Excavator Service**  
**Directional Drilling**  
**Water Service Repairs**  
**Tree Removal**  
**Digging Basements**  
**Septic Tanks**

# Holbrook Construction Inc

**Rick Holbrook, Owner - 641-431-0342**



**RUUD**

## STAY COOL

WITH A NEW AC SYSTEM.

RELY ON RUUD™

GET ENERGY STAR® PRODUCTS

and save on utility bills!



SAVE MONEY

with high-efficiency Ruud HVAC systems.



RUUD AIR CONDITIONERS

- ✓ RELIABLE COOLING
- ✓ QUALITY-BUILT
- ✓ HIGH-EFFICIENCY



2164 Hwy 25 • Guthrie Center

(641) 332-2198

DOUG'S PLUMBING & HEATING

In keeping with its policy of continuous progress and product improvement, Rheem reserves the right to make changes without notice.

ASK

Lake Panorama

TIMES

If you’ve got questions, we’ll find the answers.

**Q. Should I be concerned about the data that Nextdoor is collecting about me?**

**A.** Nextdoor is a social networking service for neighborhoods that was founded in 2008 by Nirav Tolia, Sarah Leary, Prakash Janakiraman and David Wiesen and is based in San Francisco. The short answer to your question is yes, you should be concerned about data that any company is collecting about you, and that includes Nextdoor. The long answer is in Nextdoor’s privacy policy, which can be found at <https://legal.nextdoor.com/us-privacy-policy-2020>. The 6,533-word document defines how and why the company uses your information, who they share it with, and your legal rights. Nextdoor admits to automatically collecting technical information from your browser, your computer or your mobile device including device data, log data and cookie data when you visit or use Nextdoor or read a message from them. As always, proceed with caution when providing personal data to any company for any reason and know that, at least for now, most everything you view or post is being tracked, used or sold in some way.

**Q. I was told I cannot put a Vote for Trump election sign on my lake property. Why not?**

**A.** According to the Lake Panorama Association Rules and Regulations, yard signs are prohibited with a few exceptions including property for sale signs, temporary open house signs, temporary garage sale or auction signs, dock identification signage, and personal signage that identifies the owners and/or name of a property that is not larger than 10 square feet in area and that is wholly located within the survey lot boundaries of the property. No other advertising signs shall be displayed on any numbered lot, LPA property, parks or roadways in the project area without written permission of the Association. LPA security may pull any signs that are prohibited, including election or campaign signs.

**Q. Are there any restrictions at the lake on burning leaves?’**

**A:** This question was addressed in a recent Lake Panorama Prompt email, which stated that burning is not allowed on the streets, in roadside ditches or in drainages. Burning may be done only within the actual lot pins of a resident’s property, and only items that grow on a lot can be burned. No construction debris, trash, garbage or other materials are to be burned on one’s property. ■

Submit your questions at  
[www.lakepanoramatimes.com](http://www.lakepanoramatimes.com)  
or email [shane@dmcityview.com](mailto:shane@dmcityview.com).

# News briefs

**GET A FLU SHOT AND GIVE 12 MEALS TO FOOD PANTRY**

This year more than ever, it is important to get your annual flu shot. The flu shot is still the best way to protect yourself and those around you from the flu. Not only will it protect you, but it will help reduce trips to the doctor’s office and hospitals, which will be important this year to help conserve valuable healthcare resources.

Timing of your flu shot does matter. It is important to get the flu shot at the right time to make sure it lasts the entire season. Just recently the CDC reiterated that it is important to get a flu shot by the end of October and receiving one prior to September may be too early, as vaccine immunity may wane before the season is over.

When you choose Medicap Pharmacy as your flu shot destination, you are helping those in need right in your own community. Through the partnership with the Food Bank of Iowa, Medicap Pharmacy will donate 12 meals to the local food pantry for every flu shot given at participating Medicap Pharmacy locations from Sept. 23 through Nov. 23, 2020.

Medicap Pharmacy is located at 615 E. Main St. in Panora.

**PANORA CHAMBER GOLF TOURNAMENT SEPT. 27**

The Panora Chamber will hold its annual golf tournament Sunday, Sept. 27, at Lake Panorama National. All proceeds will help support Panorama Days 2021. The tournament is a four-person best ball with a 1 p.m. shotgun start. The cost is \$65 for those who are not LPN members, and \$35 for LPN members. Costs cover green fees, golf cart, dinner and prizes. There still is room to enter a team or sponsor a hole. To participate, contact Dave Grove at 757-9956 or Kristen Crouthamel at 757-2737.

**ART IN THE VILLAGE SQUARE SET FOR OCT. 3**

Enjoy music and art from local talent on Saturday, Oct. 3 from 10 a.m. to 5 p.m. on the Panora City Square during Art in the Village Square Fall Festival. Bring a lawn chair and hang around to enjoy the festivities. In case of rain, the festival will be held in the Veteran’s Auditorium. This event is sponsored by the Guthrie County Arts Council. For more information, visit [guthriecounty-artsCouncil.org](http://guthriecounty-artsCouncil.org).

# CHARITABLE GROUP CHOOSES TO HELP FOOD PANTRY

Each of the 150 members will write a check for \$100 for a total charitable gift of \$15,000.

BY BARRY MONAGHAN

Ten Squared Plus Men for Guthrie County met Aug. 18 at the Lake Panorama National Conference Center. Due to the influence of COVID related issues, the crowd was small, but the enthusiasm and quality of presentations still was evident.

David Van Ahn presented for the Guthrie County Sheriff’s Chaplains

group, Dan Wilhelmi presented for the Bagley Library, and Frank Teale presented for the Guthrie County Food Pantry. Following the presentations, a vote was taken and the winner was the Guthrie County Food Pantry.

Each of the 150 members will write a check for \$100 to the Food Pantry for a total charitable gift of \$15,000. Since the organization began in 2016, 13 Guthrie County

entities have been chosen for a total contribution so far of \$178,750.



Ten Squared Plus Men for Guthrie County would like to send a special thank you to Guthrie County State Bank for purchasing refreshments and to the LPN Conference Center for opening the facility and allowing its use without charge.

The organization will meet for the final time in 2020 sometime in late November or early December. ■




**WANT TO REACH  
LAKE PANORAMA RESIDENTS?  
Contact me today!**  
**Stormy Baker at 515-822-2531**  
or email [stormy@iowalivingmagazines.com](mailto:stormy@iowalivingmagazines.com)

*Serving Lake Panorama and surrounding area for over 30 years!*




- Complete floating dock, lift and canopy starting at just \$15,000! Installed!!
- Entire dock system is floating, always stays level and fluctuates with water level.
- No need to pay barge fees to remove and re-install, if in protected coves.
- Constructed entirely of maintenance-free materials. Treated wood frame is also available.
- Full line of dock accessories: benches, ladders, cleats, bumpers, dock boxes, etc.
- Econo Lift Boat Hoists in marina starting at only \$4575! Installed!!
- Floating PWC lifts starting at just \$2050! Installed!

*At L&N Dock and Lifts, customer service is and always has been our top priority for 30 years!*



62799 577th Street • Lewis, Iowa 51544  
(712) 769-2550 • (800) 546-6985  
[www.LNDocks.com](http://www.LNDocks.com)

*“Stay Afloat”*



BOAT HOIST



**Know what’s below.  
Call before you dig.**

**It’s the law and NOT  
calling could cost you  
money or your life!**

**Call 811 or 800-292-8989**  
**[www.iowaonecall.com](http://www.iowaonecall.com)**



PANORA TELCO  
641-755-2424  
[www.panoratelco.com](http://www.panoratelco.com)



641-755-2301  
[www.lakepanorama.org](http://www.lakepanorama.org)

**Lake Panorama Association Board of Directors Meeting**

July 28, 2020

LPN Conference Center

The Lake Panorama Association Board of Directors met July 28, 2020, at 5 p.m. at the LPN Conference Center. Board members in attendance were Mary Jane Carothers, Emily Donovan, Gary Evans, David Finneseth, Rich Schumacher, and Jim Spradling.

LPA Staff in attendance: Danna Krambeer, Lane Rumelhart and John Rutledge.

President Carothers called the meeting to order at 5 p.m.

**Agenda Item 1 – Approval of the Agenda**

Rutledge announced changes to the agenda. Agenda item 4c was withdrawn and agenda item 4i was added. Agenda item 4i was the sale of LPA lot 1124, which was recommended by the Land Sales committee prior to the meeting.

Spradling moved to approve the revised agenda. Motion seconded, carried unanimously.

**Agenda Item 2 – Open Forum** – No one present for open forum.

**Agenda Item 3 – Consent Agenda**

Schumacher moved to approve the consent agenda. Motion seconded, carried unanimously.

Consent agenda to include:

- a) LPA General Manager's Report
- b) Approval of minutes from 06.30.2020 LPA Board Meeting
- c) Acceptance of 06.30.2020 consolidated financial report – LPA & LPN, LLC
- d) Set date for next board meeting
- e) Accept minutes of the 07.13.2020 Building Code Committee meeting
- f) Accept minutes from 06.22.2020 LPN LLC Board of Managers meeting

**Agenda Item 4a – Variance Request: Terry & Kersten Gebard, Lot 582/3755, side lot setback for storage shed as recommended by Building Codes committee**

Excerpt from Building Codes Minutes:

*Terry Gebard (lot 582/3755) at 4822 Castle Point presented plans to the committee asking for a variance to build a storage shed within 8 feet of the side-lot line. Terry also requested a variance for a roofed walkway to extend off the side of his proposed shed. After discussion, the committee decided that the side-lot request was fine, as LPA is the adjacent lot owner and is OK with the*

*placement. The committee decided no roof should be allowed to be built, as a roof would deem the area underneath as part of the structure, therefore exceeding the square footage requirements. Schumacher made a motion to allow the shed to be built up to 8 feet closer to the side-lot line, (with no roof to be built). Motion seconded by Gary Evans and carried unanimously.*

Schumacher moved to approve an eight-foot side lot setback variance for construction of storage shed for lots 582/3755, Terry & Kersten Gebard. Motion seconded, carried unanimously.

**Agenda Item 4b – Sale of lot 2367**

The land sales committee reviewed an offer to purchase lot 2367 for \$12,500. The committee collectively decided to counter. An agreement was reached for \$18,000.

Schumacher moved to accept the offer of \$18,000 to sell lot 2367 to Greg & June Anderson, Motion seconded, carried unanimously.

**Agenda Item 4c – Sale of lot 3079 – Withdrawn**

**Agenda Item 4d – Sale of lot 6503**

The land sales committee reviewed an offer to purchase lot 6503 for \$12,500 and recommended offer be accepted.

Spradling moved to accept the offer of \$12,500 to sell lot 6503 to Lawrence Smith, Motion seconded, carried unanimously.

**Agenda Item 4e – Rule / Building Code changes regarding solar and wind power**

This has been an issue of focus for the committee since LPA received a request for freestanding solar power in early 2020. The proposed rules are listed below addition of 2905 Alternative Energy Sources (Solar and Wind)

The entirety of this change is the ADDITION of new language. No existing language is being deleted or modified.

**2905 Alternative Energy Sources (Solar and Wind)**

**2905.1** Solar Energy A Solar Energy Device shall be defined as a system, or series of mechanisms, designed to provide heating or cooling or to produce electrical or mechanical power by collecting and transferring solar generated energy. This definition includes, but is not limited to, a mechanical or chemical device that has the ability to store solar-generated energy for use in heating or cooling or in production of power.

**2905.11** A Solar Energy Device may only be installed with advanced written approval by Lake

Panorama Association's Building Code Supervisor. All structures must abide by the following guidelines:

**2905.111** Member must present to-scale drawings of the installed system.

**2905.112** Photos of the roof-mounted system.

**2905.113** Materials, photos, manufacturer's description of the system.

**2905.114** All piping, conduit, wiring, etc. will be concealed where possible and placed inconspicuously as possible when viewed from all angles.

**2905.115** No ground or wall mounted systems allowed.

**2905.116** Roof mounted systems must use panels that are parallel to the roof.

**2905.117** Panels must not be visible from the lake unless they are of an architectural design whereas they do not appear as solar panels (example: solar shingles).

**2905.118** System must be commercially produced/manufactured.

**2905.119** Components of the systems must be integrated into the design of the home.

**2905.120** System shall not extend beyond the ridgeline, eaves or gutter line of the roof installed upon.

**2905.121** Installation must be a permanent, non-rotating or non-motorized system.

**2905.122** All systems installed prior to June 30, 2020, pre-date the implementation of this rule and shall be allowed to remain in-place. Replacement of these systems shall be subject to the above rules and regulations.

**2905.2** Wind Energy A Wind Energy Device shall be defined as a system, or series of mechanisms, designed to provide heating or cooling or to produce electrical or mechanical power by collecting and transferring wind generated energy. This definition includes, but is not limited to, a mechanical or chemical device that has the ability to store wind-generated energy for use in heating or cooling or in production of power.

**2905.21** Wind Energy Devices are prohibited at Lake Panorama.

Evans moved to adopt new building code sections 2905.1 (solar) and 2905.2 (wind). Motion seconded, carried unanimously.

**Agenda Item 4f – Rule/ Building Code changes regarding deck size on storage sheds**

There have been some storage sheds on undeveloped lots with extensive decking systems

surrounding the storage sheds. LPA building codes is recommending the attached rule additions to address this. (LPA is also notifying these members that overnight occupancy is prohibited in storage sheds.)

The entirety of this change is the ADDITION of new language. No existing language is being deleted or modified

**2840 Storage Building Permit and Requirements**

**2840.11** Decks added on to storage sheds must not exceed the square footage of the shed itself.

**2840.12** Square footage of a shed is to be measured by the foundation.

**2840.13** The overhang of the roof must not exceed 24 inches; no deck shall be covered by a roof.

**2840.14** Permanent skirting is required on the entirety of any deck that has, at any given point, more than 24 inches of distance between the top of the deck and the top of grade. Skirting must be of a fixed nature and materials must be consistent in appearance with the deck.

**2840.141** Approval of skirting material shall be confirmed by LPA prior to installation. LPA has sole discretion to approve materials used for deck skirting.

Spradling moved to adopt new building code sections 2840 regarding storage building permit and requirements, including 2840.11, 2840.12, 2840.13, 2840.14 and 2840.141. Motion seconded, carried unanimously.

**Agenda Item 4g – Rule/ Building Code changes regarding roof pitch for minor components/percentages of roof.**

Excerpt from Building Codes Minutes:

*Lane Rumelhart presented an idea to the committee to allow LPA management to approve roof pitches less than 6:12 if the area of the roof is less than 10 percent of the*

*total roof structure. The committee agreed that roof pitch variance requests of this nature should not need a variance request and could be approved by LPA building codes supervisor. Westercamp made a motion to allow the LPA Building Code Supervisor to approve roof pitches with less than 10 percent of the total roof area not meeting the 6:12 roof pitch guideline. Motion seconded by Schumacher and carried unanimously.*

Schumacher moved to approve a motion clarifying the LPA building codes administrator may consider a roof as being compliant with LPA's roof pitch requirements, provided 90% or more of the roof meets the 6:12 roof pitch requirement. It is the intent of the board to avoid variances for minor components of the roof, such as transitional sections, eyebrows, crickets and dormers, which comprise 10% of the roof, or less. Motion seconded, carried unanimously.

**Agenda Item 4h – Approve deer hunting regulations for 2020-21 deer season**

One substantive change is proposed for the 2020–2021 hunting program. The number of guests a member may register will be limited to three. This is different from allowing registering unlimited guests as has been done the past couple of years.

Spradling moved to approve the 2020-21 Deer Hunting Program, to include the change to limit number of guests a member may register to three, all other rules remain the same as the 2019-20 Season. Motion seconded, carried unanimously.

**Agenda Item 4i – Sale of lot 1124**

The land sales committee reviewed an offer to purchase lot 1124 for \$12,500. The committee collectively decided to counter at \$15,000, Buyer

accepted the counteroffer of \$15,000.

Donovan moved to accept the offer of \$15,000 to sell lot 1124 to Adam Hackfort. Motion seconded, carried unanimously.

**Agenda Item 5 – Old Business**

Rutledge informed the board Neil Wright has resigned from the LPA Board of Directors citing health considerations. Wright conveyed his regrets for not being able to finish his term and thanked the LPA board and staff for their support.

Rutledge noted an appointment can be made by the board and will serve until the next election.

Donovan moved to regretfully accept Wright's resignation and appoint Larry Babcock to serve until the next director election. Motion seconded, carried unanimously.

**Agenda Item 6 – Closed Session – The board entered closed session at 6:09 p.m. to discuss legal matters. The board exited closed session at 6:57 p.m.**

**Agenda Item 7a – Dog Park**

Friends of Lake Panorama submitted plans for a dog park, to be funded 100 percent by fundraising efforts. Proposed location is along East RV Road by the East Campground. Several questions were raised by the Board regarding who would maintain and police the dog park. After a short discussion which raised several questions, it was decided to ask representatives of Friends to come to the next board meeting to answer questions and provide more details.

Finneseth moved to table the Dog Park discussion until the next meeting. Motion seconded, carried unanimously.

**Adjourn - With no further business, the meeting was adjourned at 7:10 p.m. ■**

# SHARE YOUR PHOTOS!



*Lake Panorama*  
**TIMES**

Show us how you are enjoying your time at Lake Panorama. Send photos with names and captions to [shane@dmcityview.com](mailto:shane@dmcityview.com).

## Keep Your Vehicle Looking Its Best!

# ALL SEASONS CAR WASH

## EASY TO USE! CONVENIENT! AFFORDABLE!

Check us out on Hwy 44 West, Panora!



All Seasons Car Wash has state-of-the-art automatic carwash bays, and turbo dryers in the self service bays.

Washing Options from \$7-\$10 and our Customer Value Cards are always available

Our automatic wash bays can accommodate Dually & Long Bed extended cab pick ups!

Always Open 7 days a week 24 Hours for your convenience!

601 W. MAIN, PANORA



DALLAS COUNTY HOSPITAL  
FAMILY MEDICINE CLINICS

An Affiliate of **MERCYONE**

# HEALTH CARE FOR THE ENTIRE FAMILY

**DCH FAMILY MEDICINE PERRY**

A HOSPITAL OUTPATIENT DEPARTMENT OF DALLAS COUNTY HOSPITAL  
616 10TH ST. PERRY, IA 50220  
515-465-3553

ERIC M. ASH, MD  
DEBORAH MEDICI- FEICK, PA-C  
JASON NOBLE, PA-C  
WILLIAM PALMER, MD  
STEVEN SOHN, MD  
LINDSAY WEBER, PA-C

**DCH FAMILY MEDICINE PANORA**

319 E MAIN ST. PANORA, IA 50216  
641-755-2121

ERIC M. ASH, MD  
AMY HARLAND, PA-C  
KARA REIS, ARNP



DALLAS COUNTY HOSPITAL  
FAMILY MEDICINE CLINICS

An Affiliate of **MERCYONE**

# Q&A: John Rutledge, General Manager, Lake Panorama Association

## LPA WATER RATE INCREASE IN OCTOBER BILL

By **SUSAN THOMPSON**  
*Lake Panorama Times*

The quarterly rate for Lake Panorama Association water customers will increase with the bills they receive in early October. In this month's Q&A, John Rutledge, LPA general manager, talks about the reason for the increase, plus improvements being made to the LPA water system.

**Q. Let's start with a review of the history of the water plant upgrades that necessitate this rate increase.**

A. For several years, LPA has been exploring long-term options that would allow the association to discontinue reliance on two Dakota Aquifer wells. These wells have served LPA since the 1990s but have been temperamental in recent years. LPA determined the Dakota wells did not represent a reliable source of water for the association's future.

In 2017, a three-month reverse osmosis pilot study was conducted at the water plant. The results showed good finished water quality would be possible using only Jordan water treated by reverse osmosis. LPA began pursuing a project

that includes adding a second Jordan well, along with a reverse osmosis treatment system and concentrate discharge line.

Total cost for the entire project is \$4.7 million. Funding for the project is through the State Revolving Loan Fund for drinking water improvements, at a fixed rate of 2 percent interest for 20 years.

**Q. When was the decision on this rate increase made?**

A. At the LPA board of directors' meeting Nov. 26, 2019, the board voted unanimously to increase the minimum charge for water rates from \$90 per quarter to \$160 per quarter for all residential and commercial members. The increase will take effect with the Oct. 1, 2020, water billing. Money generated from the increase will be used to make the State Revolving Loan Fund payments, and will not be used for operational expenses.

No other changes in LPA's rate structure are being made at this time. The LPA rate structure is subject to periodic adjustment by the LPA board of directors, and LPA does reserve the right to increase or decrease

rates as needed to support the operation of LPA's potable water plant and associated distribution system.

**Q. When the work is complete, what improvements will LPA water customers notice?**

A. Water quality will be substantially increased with our new system. Brown and black discoloration caused by iron and manganese will no longer be a concern. And LPA's traditionally "hard water" will be greatly improved.

Water hardness can be described as either parts per million or grains per gallon. LPA water currently has a hardness of 615 parts per million or 36 grains per gallon. The new system is designed to produce water that is 120 parts per million or 7 grains per gallon. This will be consistent with what many municipalities in the Des Moines metro provide to their customers.

Once the new system is in operation, members who have in-home water softeners should have them recalibrated. Recalibration is not an urgent requirement for homeowners but will help them enjoy the cost savings of reduced salt usage. An increased

lifespan of water softeners and other appliances is another expected benefit of this system upgrade.

**Q. What's the timetable for the water plant improvements to be complete?**

A. LPA is pleased to report all phases of the project are on schedule and progressing as planned. The contractor is experiencing some modestly increased lead-time on pipe orders, but this should only add a few weeks to the job. We hope to be on the new system in late 2020, with some of the disconnection and deconstruction lingering into early 2021. Further information will be provided to water customers when transition to the new system occurs. ■



### Want to reach Lake Panorama Residents?

ADVERTISE IN THE  
*Lake Panorama*  
**TIMES**  
*Mailed to all property owners!*



Contact me today!

**Stormy Baker**

cell: 515-822-2531  
stormy@iowalivingmagazines.com



# Van Houten Barge Service

- Boat lift and dock installation, removal and repair
- Custom built cantilever docks
- Rip-rap and shoreline work

**Customer Service is our  
#1 goal.**

**We want to get you boating  
as soon as possible.**

--Call for free estimates--

**Mark Van Houten  
(515) 975-7016 or  
(641) 431-4002**



**GCSB INVESTMENT  
CENTER**  
*Connecting Communities*

### INVESTING IN YOU

## Facts About Medicare Open Enrollment

**Medicare's open enrollment period runs through December 7.**

When enrolled in Medicare, you pay multiple premiums for multiple types of coverage (Parts A and B as well as Part D prescription drug plan). Original Medicare does not cover some costs, such as dental and vision care expenses. Unlike a group health plan, there are no caps on out-of-pocket costs or a risk that you might have to pay hospital insurance deductibles.

Many retirees buy Medigap policies or enroll in comprehensive Medicare Advantage (Part C) plans for additional coverage. The downside of Part C plans is that you are restricted to the doctors in their networks. Original Medicare allows you to choose any doctor that accepts Medicare.

You can freely switch from one Part C plan to another in the open enrollment period; you can also enroll in one without having to go through underwriting. If you want to move from a Part C plan back into original Medicare, you may not be able to supplement Parts A and B with a Medigap plan right away because underwriting will be required.

**It is vital to understand these matters. To read this article in its entirety, visit [investgcsb.com](https://investgcsb.com)**

If you have questions, visit **Medicare.gov** or **ssa.gov/medicare** for more information. Our office can also connect you with a Medicare and Supplement expert as well.



**Kristen Crouthamel, AIF®, Financial Advisor**

**GUTHRIE CENTER: 413 State Street • Guthrie Center, IA 50115  
PANORA: 505 East Main Street • Panora, IA 50216**

**EM: [kristen@investgcsb.com](mailto:kristen@investgcsb.com) • PH: 641.755.2799  
MOBILE (VOICE): 641.757.2737 • MOBILE (TEXT): 641.450.1868**

**InvestGCSB.com**



This content/article was prepared by MarketingPro. Securities offered through Registered Representatives of Cambridge Investment Research, Inc., a broker-dealer, member FINRA/SIPC. Advisory services offered through Cambridge Investment Research Advisors, Inc., a Registered Investment Adviser. Guthrie County State Bank and GCSB Investment Center are not affiliated with Cambridge. Non-deposit investment products are not FDIC insured, not bank guaranteed, and may lose value. GCSB Investment Center does not offer legal or tax advice. Please consult the appropriate professional regarding your individual circumstance.

# CALENDAR OF EVENTS

Submit items for events calendar at [www.lakepanoramatimes.com](http://www.lakepanoramatimes.com). Event dates and times are subject to change. Contact hosts for updated details.



**Friday, Sept. 11**  
**Varsity Football:**  
**Panorama vs. Van Meter**  
7 p.m.  
Panorama High School  
[www.panoramaschools.org](http://www.panoramaschools.org)

**Monday, Sept. 14**  
**Panora City Council Meeting**  
6:30 p.m.  
[www.cityofpanora.com](http://www.cityofpanora.com)

**Monday, Sept. 14**  
**School Board Meeting**  
6:30 p.m.  
Board Room  
[www.panoramaschools.org](http://www.panoramaschools.org)

**Tuesday, Sept. 15**  
**Girls HS Swim**  
6:30 p.m.  
[www.panoramaschools.org](http://www.panoramaschools.org)

**Thursday, Sept. 17**  
**Cross Country: JV/Varsity Invitational**  
5 p.m.  
[www.panoramaschools.org](http://www.panoramaschools.org)



**Sunday, Sept. 20**  
**PIRATE OPEN - ENTER IF YE DARR!**  
11 a.m. - 4 p.m.  
5071 Clover Ridge Road  
Start: 11 a.m. Shotgun  
Format: 4-Person Best Shot  
Cost: Entry includes golf, cart, flag events, contests and prizes.  
LPN Golf Members - \$140/team  
Non LPN Golf Members - \$260/team  
For more information or to register contact the LPN Pro Shop at 641-755-2024.  
[www.lakepanoramanational.com](http://www.lakepanoramanational.com)

**Thursday, Sept. 24**  
**Girls HS Swim**  
6:30 p.m.  
[www.panoramaschools.org](http://www.panoramaschools.org)

**Friday, Sept. 25**  
**No school**

**Sunday, Sept. 27**  
**Panora Chamber Golf Tournament**  
Lake Panorama National  
Four-person best shot  
1 p.m. shotgun start  
\$35 for LPN members; \$65 for non-LPN members  
All proceeds support Panorama Days 2021  
Contact Dave Grove at 757-9956 or Kristen Crouthamel at 757-2737.

**Monday, Sept. 28**  
**Panora City Council Meeting**  
6:30 p.m.  
[www.cityofpanora.com](http://www.cityofpanora.com)

**Tuesday, Sept. 29**  
**LPA Board Meeting**  
5 p.m. Lake Panorama National Conference Center  
[www.lakepanorama.org](http://www.lakepanorama.org)

**Friday, Oct. 2**  
**Varsity Football: Panorama vs. ACGC**  
7 p.m.  
Panorama High School  
[www.panoramaschools.org](http://www.panoramaschools.org)

**Saturday, Oct. 3**  
**Art in the Village Square Fall Festival**  
10 a.m. to 5 p.m.  
Panora City Square  
Local artists and musicians. Bring a lawn chair and stay awhile. In case of rain, festival will be held in the Veteran's Auditorium.  
[www.guthriecountyartscouncil.org](http://www.guthriecountyartscouncil.org)

**Friday, Oct. 9**  
**Varsity Football:**  
**Panorama vs. Kuemper Catholic**  
7 p.m.  
Panorama High School  
[www.panoramaschools.org](http://www.panoramaschools.org)

**Monday, Oct. 12**  
**School Board Meeting**  
6:30 p.m.  
Board Room  
[www.panoramaschools.org](http://www.panoramaschools.org)

**Tuesday, Oct. 13**  
**Varsity Volleyball:**  
**Panorama vs. Woodward Granger**  
7 p.m.  
Panorama High School  
[www.panoramaschools.org](http://www.panoramaschools.org)

**Sunday, Oct. 18**  
**CHILI DIPPER OPEN**  
11 a.m. – 4 p.m.  
5071 Clover Ridge Road  
Start: 11 a.m. Shotgun  
Format: 2-Person Best Shot  
Cost: Entry includes golf, cart, prizes and Chef Brent's Chili.  
LPN Golf Members - \$60/team  
Non LPN Golf Members - \$120/team  
For more information or to register contact the LPN Pro Shop at 641-755-2024.  
[www.lakepanoramanational.com](http://www.lakepanoramanational.com)



**Friday, Oct. 30**  
**Panora Beggars Night**  
6-8 p.m.  
[www.cityofpanora.com](http://www.cityofpanora.com) ■

## Panorama wildlife

Have wildlife photos to share? Send to [shane@dmcityview.com](mailto:shane@dmcityview.com) and look for them in this publication and online at [www.lakepanoramatimes.com](http://www.lakepanoramatimes.com).



We thank Lake Panorama resident Christopher Duree for his photos of Panorama hummingbirds.

**Want to reach Lake Panorama residents?**

Contact me today!

**Stormy Baker** cell: 515-822-2531  
[stormy@iowalivingmagazines.com](mailto:stormy@iowalivingmagazines.com)

**Rick Titus** in his **45th** year of selling and installing more efficient fireplace inserts & vent free gas logs.



—photos by Les Hauer, Wright County Monitor

If you have a fireplace that burns wood, you know that it loses all of its heat up the chimney. Rick Titus has a wood burning insert that will burn with the efficiency of a wood stove and fit inside your fireplace so it keeps your fireplace look.

If you have a gas log in your fireplace it also sends all of its heat up the chimney. Rick has Vent Free gas logs that can burn as efficient as a gas cook stove and burn with the damper closed, thus keeping all the heat in the house.

If you have one of the newer gas fireplaces that vents out the side of the home or up a chimney, Rick can convert it over to a Vent Free log and keep all the heat in the home.

So no matter what kind of fireplace you may have, Rick has an efficient solution for it. Call Rick or email him at [yahtitus@gmail.com](mailto:yahtitus@gmail.com) or go to his web site below. Rick even has new fireplaces and wood stoves that can heat your home even during a power outage.

**Call Rick at 515-532-3881 or 515-293-2455 or visit [www.fireplacesatthecountrystore.com](http://www.fireplacesatthecountrystore.com)**



**Pamper your business with a policy from West Bend.**

You gave your business what it needed to grow into the pride and joy it's become. Let us help you nurture it. An insurance policy from West Bend is the best way to keep it happy, healthy, and profitable.

We'll wrap it in the cozy warmth of the Silver Lining®.

To find out more, contact this Official Supplier of the Silver Lining®.



**BRYTON**  
**INSURANCE**  
**AGENCY**

128 W. Main St.  
Panora, IA 50216  
(641) 755-2123



**WEST BEND®**  
THE SILVER LINING®



# CLASSIFIEDS

Submit FREE classifieds at [www.lakepanoramatimes.com](http://www.lakepanoramatimes.com).

**WANT TO BUY**

Seeking to purchase a used 45110 or bigger boat lift. Have one for sale or know of one that might be? Call Brian at (515) 306-3933.

**HELP WANTED**

Admin & Marketing Coordinator Position  
Midwest Partnership Development Corporation is currently accepting resumes for the position of Administrative & Marketing Coordinator. The Administrative & Marketing Coordinator will assist industries, businesses, entrepreneurs, and other organizations in areas pertaining to business retention/expansion, workforce, funding, and other areas as needed; will partner with members, stakeholders, governmental entities, and others to coordinate and collaborate in creating a diversified economy that offers many options to area residents in order to enhance and strengthen community vitality and grow tax base; and will pursue projects, strategic plans and other organizational goals. To see full job posting visit our website: [www.midwestpartnership.com](http://www.midwestpartnership.com). Please send resume and cover letter to Sarah Gomez, PO Box 537, Stuart, IA 50129 or email to [sgomez@midwestpartnership.com](mailto:sgomez@midwestpartnership.com)

**WANT TO BUY**

WANT TO BUY your manufactured or mobile home 1990 and newer CENTURY HOMES of OSKALOOSA 641-672-2344. (MCN)

**ADOPTION**

ADOPTION. Southern California sunlit nursery awaits newborn. Loving family promises baby secure future, family friendly neighborhood, excellent schools. Generous living expenses paid. Kay and Ramsey 1(209) 251-0335 or attorney 1(310)663-3467. (MCN)

**ANNOUNCEMENTS**

INVESTIGATE BEFORE YOU INVEST! Midwest Free Community Paper Association does not knowingly accept fraudulent or deceptive advertising. Readers are cautioned to thoroughly investigate all classifieds and other ads which require an investment. (MCN)

**AUTOMOBILES**

DONATE YOUR CAR TO CHARITY. Receive maximum value of write off for your taxes. Running or not! All conditions accepted. Free pick-up. Call for details. 855-752-6680 (MCN)  
DONATE YOUR CAR, TRUCK TO HERITAGE FOR THE BLIND. Free 3 Day Vacation, Tax Deductible, Free Towing, All Paperwork Taken Care Of. CALL 1-855-977-7030 (MCN)  
CASH FOR CARS: We Buy Any Condition Vehicle, 2002 and Newer. Competitive Offer! Nationwide FREE Pick Up! Call Now For a Free Quote! 888-366-5659 (MCN)

**CABLE/INTERNET**

BEST SATELLITE TV with 2 Year Price Guarantee! \$59.99/mo with 190 channels and 3 months free premium movie channels! Free next day installation! Call 855-824-1258. (MCN)  
Earthlink High Speed Internet. As Low As \$14.95/month (for the first 3 months.) Reliable High Speed. Fiber Optic Technology. Stream Videos, Music and More! Call Earthlink Today 1-855-679-7096 (MCN)  
High-Speed Internet. We instantly compare speed, pricing, availability to find the best service for your needs. Starting at \$39.99/month! Quickly compare offers from top providers. Call 1-855-399-9295 (MCN)  
DISHTV \$59.99 For 190 Channels + \$14.95 High Speed Internet. Free Installation, Smart HD DVR Included, Free Voice Remote. Some restrictions apply. 1-844-316-8876. (MCN)

**HEALTH & MEDICAL**

Stay in your home longer with an American Standard Walk-In Bathtub. Receive up to \$1,500 off, including a free toilet, and a lifetime warranty on the tub and installation! Call us at 1-855-372-3080 or visit [www.walkintubquote.com/midwest](http://www.walkintubquote.com/midwest) (MCN)  
DENTAL INSURANCE from Physicians Mutual Insurance Company. Coverage for 350 plus procedures. Real dental insurance - NOT just a discount plan. Do not wait! Call now! Get your FREE Dental Information Kit with all the details! 1-855-973-9175 [www.dental50plus.com/midwest](http://www.dental50plus.com/midwest) (MCN)

Portable Oxygen Concentrator May Be Covered by Medicare! Reclaim independence and mobility with the compact design and long-lasting battery of Inogen One. Free information kit! Call 844-716-2411. (MCN)  
VIAGRA & CIALIS! 60 pills for \$99. 100 pills for \$150. FREE shipping. Money back guaranteed! 1-866-306-9928 (MCN)

**INCOME OPPORTUNITIES**

NEW AUTHORS WANTED! Page Publishing will help you self-publish your own book. FREE author submission kit! Limited offer! Why wait? Call now: 855-623-8796 (MCN)  
Become a published author! Publications sold at all major secular & specialty Christian bookstores. CALL Christian Faith Publishing for your FREE author submission kit. 1-888-981-5761. (MCN)

**MISCELLANEOUS**

BATHROOM RENOVATIONS. EASY, ONE DAY updates! We specialize in safe bathing. Grab bars, no slip flooring & seated showers. Call for a free in-home consultation: 855-836-2250 (MCN)  
Eliminate gutter cleaning forever! LeafFilter, the most advanced debris-blocking gutter protection. Schedule a FREE LeafFilter estimate today. 15% off Entire Purchase. 10% Senior & Military Discounts. Call 1-855-577-1268. Promo Code 285. (MCN)  
The COVID crisis has cost us all something. Many have lost jobs and financial security. Have \$10K In Debt? Credit Cards. Medical Bills. Car Loans. Call NATIONAL DEBT RELIEF! We can help! Get a FREE debt relief quote: Call 1-866-552-0649. (MCN)

**WANT TO BUY**

Need some cash! Sell us your unwanted gold, jewelry, watches & diamonds. Call GOLD GEEK 1-866-274-7898 or visit [www.GetGoldGeek.com/midwest](http://www.GetGoldGeek.com/midwest) BBB A Plus Rated. Request your 100 Percent FREE, no risk, no strings attached appraisal kit. Call today! (MCN) ■



## AREA CHURCH GUIDE

**BAGLEY**

• **Bagley United Methodist Church**  
401 Main St., Bagley  
[www.umc.org](http://www.umc.org)  
641-439-2458

**BAYARD**

• **Bayard United Methodist Church**  
500 Third St., Bayard  
[www.umc.org](http://www.umc.org)  
712-651-2307  
• **St. Patrick Catholic Church**  
124 Prairie St., Bayard  
[www.guthriecounty.catholicchurches.org](http://www.guthriecounty.catholicchurches.org)  
641-747-3843

**CASEY**

• **Saint John's Lutheran Church**  
104 E. First St., Casey  
[www.idwlcms.org](http://www.idwlcms.org)  
641-746-2734  
• **United Methodist Church**  
100 E. Second St., Casey  
[www.umc.org](http://www.umc.org)  
641-746-2210

**GUTHRIE CENTER**

• **First Christian Church**  
105 N. Fourth St., Guthrie Center  
[www.christianchurchgc.com](http://www.christianchurchgc.com)  
641-332-2571  
• **First United Methodist Church**  
405 Prairie St., Guthrie Center  
[www.gcumcia.org](http://www.gcumcia.org)  
641-332-2408  
• **First Presbyterian Church**  
701 State St., Guthrie Center  
641-332-2425  
• **Guthrie Center First Baptist Church**  
113 N. Fifth St., Guthrie Center  
[www.guthriecenterbaptist.com](http://www.guthriecenterbaptist.com)  
641-747-8198  
• **Guthrie Center Seventh Day Adventist Church**  
1305 North St., Guthrie Center  
[www.guthriecentersda.com](http://www.guthriecentersda.com)  
641-322-2778  
• **Immanuel Lutheran Church**  
713 N. 12th St., Guthrie Center

[www.immanuelgc.org](http://www.immanuelgc.org)  
641-332-2918

• **Kingdom Hall of Jehovah's Witnesses**  
1300 Grand St., Guthrie Center  
[www.jw.org](http://www.jw.org)  
515-747-8524  
• **Open Bible Church**  
606 Prairie St., Guthrie Center  
515-747-3961  
• **Saint Mary Catholic Church**  
603 Main St., Guthrie Center  
[www.guthriecounty.catholicchurches.org](http://www.guthriecounty.catholicchurches.org)  
641-747-3843  
• **Seventh-Day Adventist Church**  
1305 North St., Guthrie Center  
[www.adventistdirectory.org](http://www.adventistdirectory.org)  
641-332-2761  
• **United Methodist Church**  
405 Prairie St., Guthrie Center  
[www.umc.org](http://www.umc.org)  
641-332-2408  
• **Wesleyan Church**  
101 S. 7th St., Guthrie Center  
641-747-3844

**MENLO**

• **Methodist Episcopal Church**  
402 Sevnth St., Menlo  
• **Primitive Church**  
504 Third St., Menlo

**PANORA**

• **Calvary Chapel of the Raccoon River Valley**  
604 E. Main St., Panora  
<https://calvaryraccoon.com>  
641-755-4268  
• **Church of the Brethren**  
2946 200th Road, Panora  
641-755-3800  
• **Faith Bible Church**  
2096 Highway 4, Panora  
[www.fbcpanora.com](http://www.fbcpanora.com)  
641-755-3034  
• **First Christian Church**  
102 E. Church St., Panora  
[www.panorafcc.org](http://www.panorafcc.org)  
641-755-2227  
• **Fountain Of Life Church**  
2322 Wagon Road, Panora  
[www.FOLCPanora.com](http://www.FOLCPanora.com)  
641-755-2322

• **Lighthouse Assembly of God Church**

400 S.E. Third St., Panora  
[www.panoralighthouseassemblyofgod.com](http://www.panoralighthouseassemblyofgod.com)  
641-755-3060  
• **Panora Community Church**  
2322 Wagon Road, Panora  
641-755-2322  
• **Saint Thomas Lutheran Church**  
2100 N. Highway 4, Panora  
641-755-2051  
• **St. Cecilia Catholic Church**  
220 N. First St., Panora  
[www.guthriecounty.catholicchurches.org](http://www.guthriecounty.catholicchurches.org)  
641-747-3843  
• **United Methodist Church**  
119 W. Main St., Panora  
<https://panoraumc.org>  
641-755-2655

**STUART**

• **All Saints Catholic Church**  
216 All Saints Drive, Stuart  
<https://stuartallsaints.org>  
515-523-1943  
• **Fairview Congregational Christian Church**  
1706 Stuart Road  
515-523-1493  
• **First Congregational Church**  
224 N. Division St., Stuart  
[www.stuartfccbible.org](http://www.stuartfccbible.org)  
515-523-1570  
• **Jefferson Center Chapel**  
1298 130th St., Stuart  
641-524-5358  
• **New Beginnings Open Bible Church**  
207 S.W. Seventh St., Stuart  
<http://stuartnbchurch.org>  
641-757-0192  
• **Stuart Friends Church**  
723 N. Fremont St.  
515-523-1541  
• **Stuart-Mount Vernon United Methodist Church**  
219 N.W. Second St.  
<http://umcstuartia.org>  
515-523-1078

**YALE**

• **Jamaica Union Church**  
219 Main St., Yale  
515-439-2458

Submit changes or updates at [www.lakepanoramatimes.com](http://www.lakepanoramatimes.com)

# LEAVE THE HARD WORK TO HARMANN

**WATER and SEWER**  
•  
**TRENCHING**  
•  
**BACKHOE SERVICE**  
•  
**BASEMENTS**  
•  
**TRUCKING**  
•  
**SNOW REMOVAL**




Matt Harmann, owner

**641-755-3640 • 641-757-0907** CELL

Fax 641-755-3645 • PO Box 307, Panora, Iowa 50216



## AC SAVINGS THAT'LL MAKE YOU JUMP FOR JOY.



RELY ON RUUD™

**GET ENERGY STAR® PRODUCTS**  
and save on utility bills!

**SAVE MONEY**  
with high-efficiency Ruud HVAC systems.

**RUUD AIR CONDITIONERS**

- ✓ RELIABLE COOLING
- ✓ QUALITY-BUILT
- ✓ HIGH-EFFICIENCY

2164 Hwy 25 • Guthrie Center (641) 332-2198

**DOUG'S PLUMBING & HEATING**

In keeping with its policy of continuous progress and product improvement, Rheem reserves the right to make changes without notice.

# THINKING OF SELLING?

## We have a list of buyers!



**Dave Wagler** | Broker  
**641.757.1204**

**Laura Kemble** | Broker Associate  
**641.757.0287**

When you are ready, call Sunset Realty. We will work hard to get you the best price, in the shortest amount of time. Seamlessly.

📍 218 W. Main Street, Panorama, IA 50216  
📞 Office: 641.755.2377  
🌐 [sunsetrealtyia.com](http://sunsetrealtyia.com)



Connect with us!



This advertisement is not intended to solicit already listed properties. Licensed to sell real estate in Iowa.

## “FOR SERVICE AFTER THE SALE” PLEASE REMEMBER YOUR HOMETOWN MARINA.

### GODFREY



**AQUA PATIO**  
LUXURY HIGH PERFORMANCE TRIPLE PONTOON PRICED FROM THE MID-SEVENTIES



**MONACO**  
ALL NEW TRIPLE PONTOON FOR 2020 PRICED FROM THE UPPER FIFTIES



**SWEETWATER**  
GOOD TIMES AND GREAT VALUE PRICED FROM THE LOW-TWENTIES.

### MasterCraft



**MASTERCRAFT XT21**  
Classic styling and a midsize length meet cutting-edge performance across every sport.



**MASTERCRAFT XT22**  
With crossover capabilities serving up endless possibilities you can wakeboard, ski and surf

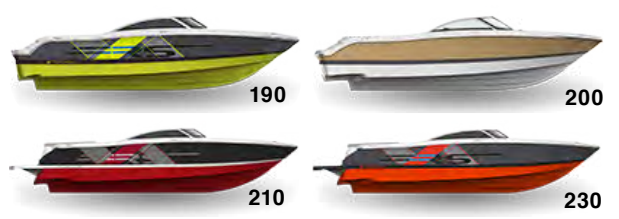


**MASTERCRAFT NXT22**  
Bigger, badder and built to be attainable, the NXT22 is where performance, comfort and style meet.

### FOUR WINNS



**ALL FOUR WINNS LUXURY MODELS IN-STOCK, INCLUDING THE 190, 200, 210 AND 230!**



### Kawasaki



Ultra LX



ALL NEW FOR 2020 - 160LX

### ShoreStation<sup>®</sup>

BOAT HOISTS

**HYDRAULIC LIFTS FOR BOATS AND PONTOONS IN STOCK**  
**VW DOCKS IN STOCK: WOOD AND ALUMINUM**

Since 1983!

## COULTER'S PANORAMA MARINE

See our inventory at [cpmboats.com](http://cpmboats.com)

SALES AND SERVICE • FULL SERVICE GAS DOCK • BOAT STORAGE • VW DOCKS

Lake Panorama, Panorama, Iowa 50216  
[coulters@netins.net](mailto:coulters@netins.net) • Phone: 641-755-2920 • Fax: 641-755-2772

# LAKE DOGS AND COVE CATS

By CHERYL TEMPLE  
*Lake Panorama Times*

## LAKE DOGS

**Jack and Jill**  
21 months  
Cockapoos  
Owners: Wade & Lea Sundeen

Jack and Jill are half-brother-and-sister, with Jack being the “brother from another mother.” Ironically, they were born on the same day, and they rule the roost. They love playing fetch all day long with their favorite ball. And they love boating, swimming, kayaking, riding on the hydra-bike, and of course, jet-skiing.



Suggest Lake Panorama residents and their pets for us to cover on the **Lake Panorama - Lake Dogs and Cove Cats** Facebook page



Want to reach Lake Panorama residents?  
Contact me today!

**Stormy Baker**  
cell: 515-822-2531  
stormy@iowalivingmagazines.com

## COVE CAT

**Vonzell, aka Miss V**  
15 years  
Owners: Diane and Duane Apling

Vonzell was rescued as a kitten from a barn in Virginia and has grown into the princess she always knew she was meant to be. She likes watching the wildlife outside her window, stretching out in the sunshine and naps. Her pet peeves are car rides to the vet and not getting enough attention from her “staff,” Diane and Duane Apling. ■

**THE LOCAL ANIMAL EXPERTS**

- Pet wellness
- Diagnostics
- Surgery
- Large or small animals
- Emergencies

**Panora P.E.T.S.**  
Helping the homeless cats of Guthrie County  
[www.panorapets.com](http://www.panorapets.com)

**STUART-ANITA VETERINARY CLINIC, PC**  
[www.StuartVetClinic.com](http://www.StuartVetClinic.com) • M-F 8AM-5PM, SAT 8AM-NOON  
827 Front St., Stuart (515) 523-1755 • 300 N. Highway 148, Anita (712) 762-4193

**Just like shopping in your best friend's closet!**

SHOP IN-STORE, ONLINE, OR ONLINE WITH CURB-SIDE PICKUP!  
**118 W. MAIN STREET, PANORA**  
**641-755-3955 • [bellasorella-boutique.com](http://bellasorella-boutique.com)**  
Tuesday through Friday 10am-6pm, Saturday 10am-4pm

GET **HYPED UP**

With checking that earns you more.

Earn up to **2.00%** APY\*  
on balances up to \$25,000

**OPEN TODAY!**  
1-800-891-9389

**Simply...**

- Make a minimum of 15 debit card transactions per cycle \*\*
- Receive e-Statements (must have a valid email address)
- Use direct deposit or automatic payments totaling \$100 or more

**And enjoy...**

- Automatic ATM fee reimbursements up to \$7 per statement cycle
- Free debit card
- Free Online Banking, Mobile Banking\*\*\* and Bill Pay
- Unlimited transactions

\*Annual Percentage Yields (APYs) accurate as of 08/12/2019. Rates may change after account is opened. Minimum to open is \$100. No monthly fees, if qualifications are met each statement cycle: (1) Balances up to \$25,000.00 receive APY of 2.00%; (2) The portion of balances \$25,000.01 or more earn an interest rate of 0.01%, resulting in 2.00% - 0.01% APY, depending on the balance. If qualifications are not met, all balances earn 0.01% APY. Qualifying transactions must post to and settle during the statement cycle. Transactions may take one or more banking days from the date transaction was made to post and settle. See a bank employee for more details. \*\*Signature and Pin Based transactions only, ATM Withdrawals are excluded from qualifying debit card transactions \*\*\*Message and data rates may apply.

**ADEL** PO Box 98 | 804 Greenwood Hills Dr. | Adel, IA 50003  
**GRAND JUNCTION** PO Box 49 | 205 E Main St. | Grand Junction, IA 50107  
**JEFFERSON** 116 W State St | Jefferson, IA 50129  
**RIPPEY** PO Box 37 | 303 Main St. | Rippey, IA 50235  
**WAUKEE** PO Box 880 | 1185 SE University Ave. | Waukee, IA 50263  
**CLIVE** 12701 University Ave. | Clive, IA 50325  
**GUTHRIE CENTER** 401 Main St. | Guthrie Center, IA 50115  
**OGDEN** PO Box 697 | 338 W. Walnut St. | Ogden, IA 50212  
**SCRANTON** PO Box 426 | 1021 Main St. | Scranton, IA 51462

**[www.mypeoples.bank](http://www.mypeoples.bank)**  
**800-891-9389**

**SCHAFER**  
ROOFING

**Roofing • Siding  
Soffit & Fascia  
Gutters**

**We are Based in and  
Serving Guthrie County**  
Give us a call **(800) 996-7321**

**Check out our recent work on Facebook!**

*Now is the time to list your home!*

Welcome To



**Lee Anne Howe**  
AGENT  
leeannehowe@outlook.com  
**515-782-7688**

**John McDermott**  
AGENT  
johnmcdermott641@gmail.com  
**641-431-0042**

**Julie Wykoff**  
BROKER  
julie@juliewykoff.com  
**515-778-0053**

**Dee Powell**  
OWNER/AGENT  
deepowell@lakepanoramarealty.com  
**515-202-3312**



**Our team of experts has the knowledge to get your property sold FAST.**

**CALL US TODAY!**

OFFICE PHONE: 641-755-3276 • 505 E. MAIN STREET, PANORA

**www.lakepanoramarealty.com**

Not intended to solicit currently listed properties. Licensed to sell Real Estate in Iowa.



**MOHAWK**  
**SmartStrand**  
FOREVER CLEAN *Silk*

**MORE  
VAN GOGH  
MOMENTS  
ARE MADE  
ON MOHAWK**



**ALL PETS.  
ALL ACCIDENTS.  
ALL THE TIME.**

For more info visit **mohawkflooring.com**



*Match anyone's price, BEAT anybody's service!*

618 GREENE STREET, ADEL, IOWA 50003

**515-993-4241**

**www.archerhomecenter.com**

Store Hours: M,W,F 9-6 | T, TH 9-8 | Sat 9-5



# Love Your Landscape!

**SUPERIOR SERVICE. SUPERIOR QUALITY.**



**Wood Duck**  
**LANDSCAPES**  
Creating Beautiful Outdoor Environments

PROUDLY INSTALLING  
**ROSETTA**  
BY MIDLAND CONCRETE PRODUCTS

Let Wood Duck Landscapes  
create your very own beautiful  
outdoor environment.



**515.661.3208**

**josh@woodducklandscapes.com**  
**woodducklandscapes.com**

