

PRSRT STD
U.S. Postage
PAID
Guthrie Center Times
Panora, Iowa
50216
Permit #2

ORCURRENTRESIDENT

FIRE IN THE SKY

The annual Lake Panorama Fire in the Sky fireworks show was held Saturday, July 4. The show, which originates from Shady Beach, was organized by the Joe Scheiring Family. Joe was the coordinator of the annual fireworks display for 20 years. He passed away last year on August 8, and this year's Fire in the Sky was presented in Joe's memory. Donations to help support the fireworks show can be sent to Joe Scheiring, PO Box 605, Panora, IA 50216.

Lake Panorama TIMES

JULY 2015 | VOLUME 47 | NUMBER 7



BrokersInternational
IOWA OPEN
LAKE PANORAMA | AUGUST 2015

Brokers International Iowa Open returns to LPN August 14-16

By SUSAN THOMPSON
Lake Times staff

The 2015 Brokers International Iowa Open at Lake Panorama National will be August 14-16. This is the sixth year Brokers International has been the lead sponsor for the Iowa Open at the LPN. There is a \$25,000 purse for the top professional in the tournament, which is administered by the Iowa PGA Section.

There is no admission charge for spectators throughout the three-day tournament. New for 2015 will be drink specials the final day of play near the #13 hole. Spectators are encouraged to bring a chair and watch the golfers in this location throughout Sunday's round.

Gary Soreide, tournament director, said \$1 beer and other specials will be available beginning at 11 a.m. "We thought having a place for spectators to gather and cheer on the competitors for their final round would be a fun addition to this year's tournament," Soreide said.

Besides Brokers International as the lead sponsor, American Equity is a corporate partner with a \$10,000 contribution. Another six \$5,000 sponsors also are supporting the 2015 tournament. These are Athene, Allianz, Fidelity Guarantee and Life, Great American, North American Insurance Company, and People's Trust and Savings Bank.

Some sponsor funds are making it possible to create the Roger McCarty Memorial Youth Golf Foundation, in memory of the founder of Brokers International. The foundation will provide financial support for youth golf programs, scholarships and memberships.

Panora Auto Parts is the 2015 putting green sponsor, with a \$500 contribution. Golf carts and other products the company sells will be on display near the putting green. Also new this year with a \$500 contribution is Willis Auto Campus as the driving range and pro shop area sponsor. The company will be displaying new cars from the dealership.

OPEN, PAGE 5A



LAKE TIMES FILE PHOTO

Eleven members of the Girls Line performed for the Lake Panorama Ski Team in last year's show. Each of the girls took off the dock on two skis, dropped one, and entertained the crowd in unison with leg kicks.

Panorama Days celebrates 50 years of Lake Panorama becoming a part of the community

By ASHLEY SCHABLE | *Lake Times staff*

The community of Panora is feverishly preparing for its annual Panorama Days celebration, July 31-August 2, at the Town Square & Gazebo with several events also at the lake this year.

This year's theme - 50 and Fabulous - celebrates 50 years of Lake Panorama becoming part of the community.

"We're working together to make a great experience for everyone," said Chaille Crandall, who is heading Panorama Days for the third straight year. "It's a great way to celebrate our community."

The Lake Panorama Association

and The Port are sponsoring the Fireworks from the Lake's South Shore on Friday. The lighting of the sky will take place around 9:15 p.m.

Nevitt Real Estate Agent, John McDermott, is again sponsoring a Boat-In/Beach Lounge Movie at Lake Panorama's Main Beach. Big Hero 6, a perfect movie for the whole family, will air Saturday at 9:15 p.m.

"We've changed the nights for both the fireworks and the movie this year," Crandall said. "We're hoping both can be well attended."

On Saturday, things get underway with a Bass Fishing Tournament at the Lake Panorama Marina, 5 a.m.-1:30 p.m. This is for registered boats only. A Free Kids Fishing Derby, sponsored by the local Fin and Feather, will be held at the Lake Panorama Marina from 9-11 a.m. on Sunday.

The annual Lake Panorama Ski Show will be held Saturday off the South Shore at Lake Panorama at 3:00 p.m. This year's HOLLSKIWOOD show will have Girls Line, Barefooters and Pyramids to name just a few of the exciting, eye-catching acts on the water.

"It's great to be celebrating 50 years of Panorama Days," said John Rut-

ledge, General Manager, Lake Panorama Association. "What an outstanding achievement to be celebrating half a century of cooperation between the City of Panora, Lake Panorama and the surrounding area."

Rutledge said Panorama Days is, "Our time to shine."

"Yale does such a great job over the Fourth of July and Guthrie Center is a fantastic host of our county fair," he said. "It's wonderful that Panora and Lake Panorama have been able to come together for half a century to show off our communities."

A new event this year is a Human Foosball tournament planned for Sunday at Michael Mills Park in Panora. Team registration is 11:30 with the tournament at 12 noon. Those who

PANORAMA, PAGE 4A

New LPN Executive Chef brings new ideas

By SUSAN THOMPSON | *Lake Times staff*

Peter Makens says he always knew he wanted to be a chef. "Just ask my mother," he says. "I asked for an Easy Bake oven when I was four years old." That Christmas, he found the oven under the family Christmas tree at 4:30 a.m., and prepared all the packaged foods that came with it before his parents and five brothers got out of bed.

Makens took over as executive chef at Lake Panorama National in early June. He was the sous chef at Centro, a popular downtown Des Moines restaurant that recruited him to Iowa five years ago.

Born and raised in the Minnesota Twin Cities, Makens has many years of experience. Two weeks before his 14th birthday, he took a job as a dishwasher in a restaurant near his home. That put him in position to start cooking full-time once he turned 14. "I would go to school, then

to work as a sous chef every evening. When I was done, I'd call my dad to come pick me up, because I was too young to drive," Makens says. Next came a stint as executive chef at a brew club, and five years as the owner, head chef and presumed bottle washer at Ziggy's Café.

Amongst all that, he attended one year of culinary school. By the second semester, he was doing a week's worth of assignments in a single day.

Makens has two daughters who live in the Twin Cities.



SUSAN THOMPSON | LAKE TIMES

Peter Makens took over as executive chef at Lake Panorama National in early June. He was the sous chef at Centro, a popular downtown Des Moines restaurant that recruited him to Iowa five years ago.

Brie is 17 and Ella is 11. He describes Ella as a "chip off the old block. She is a chef in training and loves to cook." When she visited recently in his West Des Moines home, Ella helped make fresh pasta.

What interested him about the executive chef position at Lake Panorama Nation-

al? "I was ready for a change of pace, a new challenge," Makens says. "I'm excited to bring something to Lake Panorama that is new and different, and that draws people from outside the immediate area."

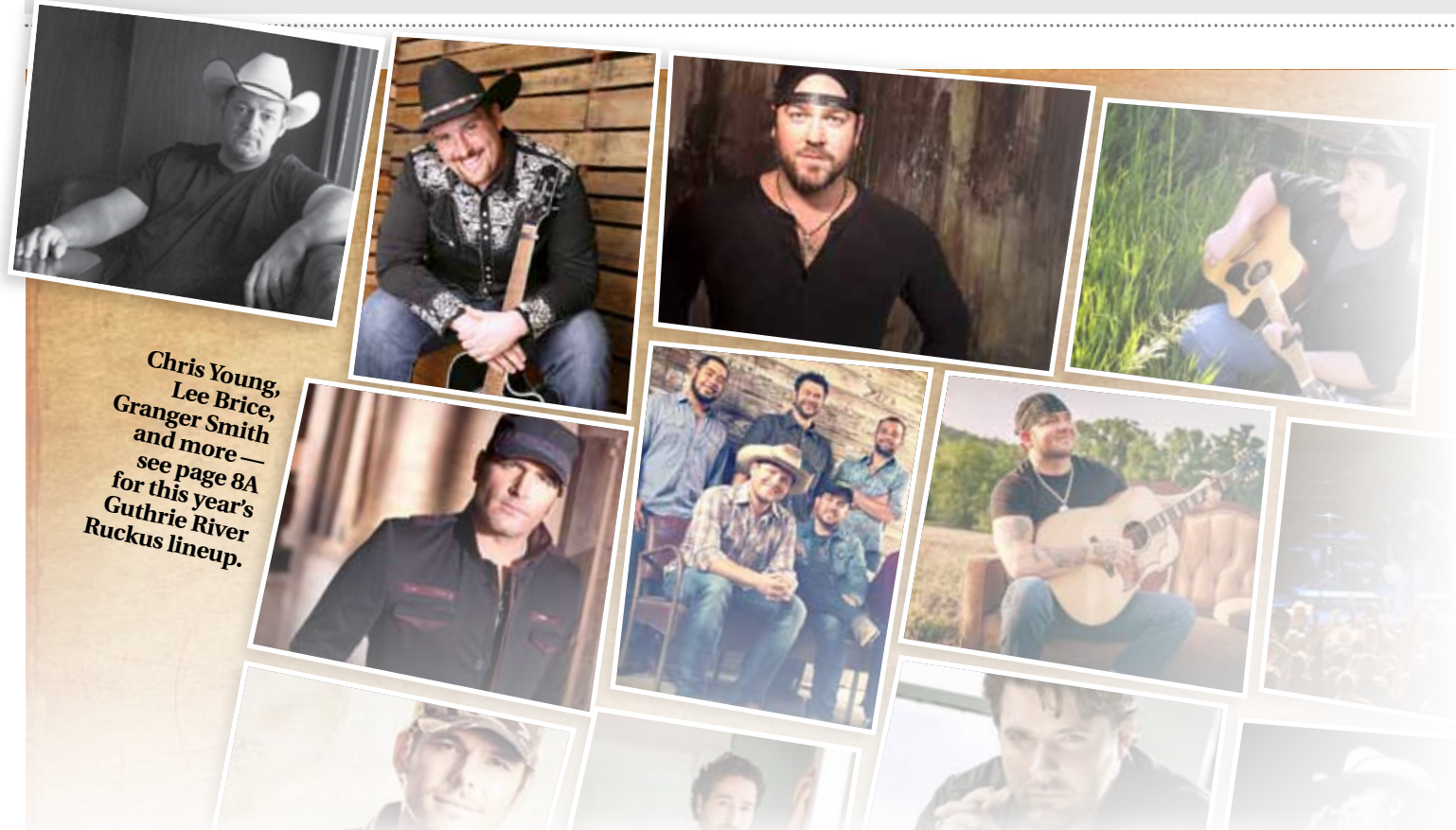
CHEF, PAGE 5A

What's happening at Lake Panorama National

By SUSAN THOMPSON
Lake Times staff

It's the middle of July, which means the 2015 golfing season is half over....sad, but true. There is some good news, though, for those who haven't purchased a 2015 LPN golf membership. Bargain hunters can buy an annual golf membership now and pay just half price. This deal is available for all membership categories - regular for both LPA and non-LPA members; distance for those who live more than 18 miles from the course; and special for those who were not LPN members in 2014. Call the pro shop at 641-755-2024 for more details.

HAPPENING, PAGE 4A



Chris Young, Lee Brice, Granger Smith and more — see page 8A for this year's Guthrie River Ruckus lineup.

GUTHRIE RIVER RUCKUS: 1 WEEK AWAY

By REBECCA MCKINSEY
Lake Times staff

As the seventh annual Guthrie River Ruckus approaches, organizers have a promise — the

yearly country music bash isn't going anywhere. This year's three-night spree, featuring headliners Chris Young and Lee Brice, is scheduled for July 23, 24 and 25.

Tickets are on sale at local Hometown Foods stores as well as online at guthriesriver-ruckus.com. A three-night ticket for the seated section, located behind

the VIP section — attendees are required to bring chairs for that section — costs \$75. General admission is \$25 for Thursday, \$45 for Friday and Saturday, or \$70 for all three nights. VIP tickets are sold out. Reserving a campsite for a week costs \$60.

Other artists playing include Chris Cagle, the Josh Abbott Band, Stoney LaRue, Jerrod Niemann, Josh Thompson, Granger Smith, Casey Muessigmann and Zach Stone.

Stoney LaRue and the Josh Abbott Band are both popular in Texas and fall into the "Red Dirt" genre, an area the River Ruckus decided to try out this year, Organizer Grant Sheeder said. "People are really digging that," he said. "We went that route, and it seems like a lot of people are coming for that."

There won't be a second stage at this year's event, and those staying at the fairgrounds will be required to have a ticket starting Wednesday before the event, Sheeder said.

Last year's attendance approached 12,000 on the event's busiest night, Sheeder estimated. Those putting together the River Ruckus hire private security for the event, and local and state law enforcement officers patrol there as well.

RUCKUS, PAGE 8A



SPECIAL TO THE LAKE TIMES

The Friends of Lake Panorama is raising money to build this destination playground at Sunset Beach. A special mailing that will go out soon to all LPA members provides more details, and includes a donation guide.

Friends of Lake Panorama board make push for Sunset Beach Donations

By SUSAN THOMPSON
Lake Times staff

At its June 15 board meeting, the Friends of Lake Panorama board of directors voted to take steps to promote additional donations for a playground at Sunset Beach.

One step is a letter that will arrive soon in the mailboxes of all Lake Panorama property owners. In the letter, Kirk Fischer, current president of the Friends board, said "everyone within the Lake Panorama community has a vested interest in recreational amenities that contribute to the community's ongoing success."

It's been just one year since the IRS granted Friends of Lake Panorama tax-exempt status. This 501(c)(3) nonprofit charity, which is focused on improving recreational amenities, is separate from the Lake Panorama Association.

The Friends board kicked off its first fundraising campaign last fall with a similar mailing. "We were pleased when more than \$35,000 was donated in the last six weeks of 2014," Fischer said. "The project that received the most support is a new destination playground at Sunset Beach. About \$25,000 has been raised so far for the playground."

The original playground bid of \$112,900 has been extended through 2015, but the vendor has said there will be a price increase in 2016. Fischer said the Friends board hopes to raise enough funds this year to lock in the current price.

Statistics show a high percentage of charitable contributions are made in the last few weeks of each year. Perhaps it's the holiday spirit, or a desire to get a final tax deduction, or both.

Fischer said the Friends board is asking LPA members to consider getting into the holiday spirit this summer, and make a 2015 charitable contribution now, rather than waiting until December.

"Your support will help us move forward with this new playground that will be enjoyed by your children and grandchildren in 2016 and for

many years to come," he said.

The playground is geared to ages 5-12, and has a play area capacity of 165. The area covered by equipment will be 60 feet by 53 feet, with a larger protective surface area of 72 feet by 66 feet. The main play structure includes multiple slides, bridges and climbing opportunities. Several smaller play structures surround the main area, including a modern take on old-fashioned merry-go-rounds and teeter-totters.

Fischer said the Friends board is fully committed to raising enough money for the complete playground. However, to help advance this project, they will consider building the playground in two phases, if necessary. The mailing LPA members will receive shows both the full playground, and a possible first phase, which could be built for \$50,000.

A form sent with the letter outlines the ways donations can be made to Friends of Lake Panorama. Cash, check, credit card, securities transfers and estate gifts all are welcome. Donations can be given in someone's memory or in honor of someone.

All contributions to Friends of Lake Panorama are tax deductible, and all donors receive a letter of thanks as their receipt. Only donations of \$500 or more receive public recognition. Donations of \$50,000 or more will receive special recognition, with the possibility of naming rights for a particular project.

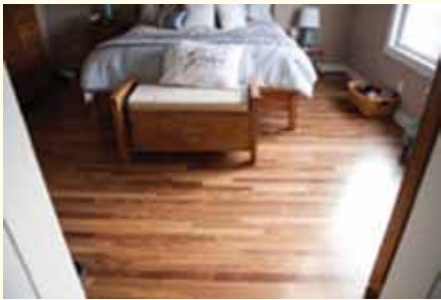
Other donor recognition levels are:

- Champion** \$25,000 - \$49,999;
- Leader** \$10,000 - \$24,999;
- Benefactor** \$5,000 - \$9,999;
- Steward** \$1,000 - \$4,999;
- Friend** \$500 - \$999.

More details about Friends of Lake Panorama, including a list of recognized donors and additional projects it supports, are on the charity's website at friendsoflakepanorama.org.

Washington Street Hardwood Floors & Decor

(712)268-5530 • 712-254-1557
102 West Washington Street • Exira, Iowa

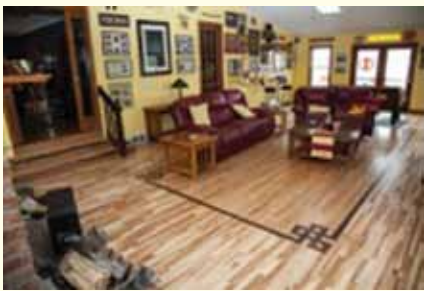
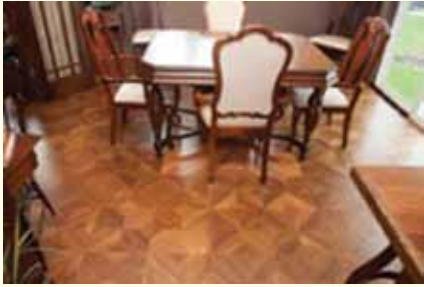


Visit our showroom or our website
www.hardwoodfloorsanddecor.com
hardwood@metc.net



- Contact Alan for new hardwood floor installation and old floor restoration and custom inlay.
- Straight flooring or detailed
- Refinishes or new floors
- Repairs and re-coats
- Stop in and visit us today, you will be "floored"
- Many surprises await you here!
- Free estimates

We renovated our building into a hardwood showroom. It is a truly breathtaking setting offering a LARGE selection of hardwoods. It is a professional sand and finish 3/4" real hardwood showroom offering various grades and widths in North American hardwoods as well as exotics. We also feature 3 beautiful staircases. The showroom is dripping in craftsmanship!!! We have a pre-finished room as well, and we have a furniture/gift and card shop and floor care products, on top of it all. You will NOT regret your trip!



Refinish Before



Refinish After

Alan is a member of the National Wood Flooring Association and a NWFA Certified installer and Sand and Finisher

"Prepare to be Floored"

Our Showroom and Gift Shop is located at 102 W. Washington St. in Exira and is Open Wednesday - Friday • 10 am - 5 pm or by appointment
Owned and Operated by Alan and Sheila Kearney

We also have our residence in Guthrie located at 605 North St. that we show by appointment so you can see Alan's work as it has many hardwood samples in the floors as well as at our showroom too.
Alan and Sheila Grove-Kearney — 712-254-1557

BUSINESS HOURS

Hours to meet your needs!

Monday, Tuesday, Wednesday & Friday
9:00am - 5:00pm

OPEN SATURDAY, 9:00am - 12:00pm

OPEN THURSDAY 9:00am - 6:00pm

Stop in and see us for your electronic needs & questions

**Solutions**
Technology Experience Center
Powered by Panora Telco

641-755-2600

112 East Main Street in Panora



LAKE TIMES STAFF

The Independence Day holiday weekend brought our family together for another wonderful weekend at Lake Panorama. The highlight of the weekend for us was the spectacular fireworks show at Shady Beach. With good weather all weekend, we were able to take the boat out on the water numerous times, including during the “Fire in the Sky” fireworks display.

Though we’ve spent most of our summer weekends at the lake this year, we did make our way to Jefferson for the 2015 Bell Tower Festival Parade on June 13. I was pleased to have a special helper for the parade as my four-year-old granddaughter Sophia walked the whole parade with me! We’re looking forward to Panorama Days from July 30-August 1.

With the Fourth of July in the books, many Iowa families are planning the final weeks of their summer vacation before children head back to school on or after August 23rd. A new promotion from Travel Iowa called “Back to Summer” is allowing Iowans to explore our state’s many attractions at affordable prices.

By visiting www.TravelIowa.com/deals, you can search for a host of opportunities to save at Iowa museums, parks, zoos, shops and malls, and hotels. Even more, the TravelIowa.com website offers assistance to travelers by offering trip ideas that are organized by regions, cities and attraction category.

There are many opportunities in the area to enjoy summer festivals and save at local attractions



including:

18th Annual Guthrie County Southern Gospel Sing in Guthrie Center from July 31-Aug. 1.

“CarrollFest” in downtown Carroll on Saturday Aug. 8.

A \$35 discount at the historic Hotel Pattee in Perry. The coupon is available any day through Dec. 31, 2015.

The Iowa State Fair, from Aug. 13-23, is just around the corner, too. I plan to be there for some of special events like the Governor’s Charity Steer Show on Aug.

15 in the Pioneer Livestock Pavilion and the Governor’s Lifesaving Awards on Aug. 21 at the Susan Knapp Amphitheater. I hope you’ll also stop by my office’s booth in the Varied Industries Building, which I plan to be at quite often.

I hope you and your family enjoy the rest of your summer. I look forward to seeing you at the lake, Panorama Days and the Iowa State Fair.

Terry Branstad
Governor,
State of Iowa

EDUCATION

‘I always knew I wanted to be a teacher and coach’

New Panorama Superintendent Shawn Holloway ready for new role

By GORDON CASTILE | Special to Lake Times

Shawn Holloway officially became the fourth superintendent last Wednesday of the Panorama school district as it begins its 27th year.

He brings a confident and competent manner to the position, coming here from Reinbeck where he was superintendent at Gladbrook-Reinbeck for two years. Prior to that he was a principal (K-12 and 7-12) for seven years, a technical coordinator for one and a sixth grade teacher for six years. He also coached football and basketball.

He holds degrees from Iowa State University, Drake University and Wayne State College.

Holloway grew up in Lake City and graduated from Southern Cal High School.

He and wife Angie have two daughters, Anna, an eighth grade, and Abbi, a sixth grader.

He and his family enjoy outdoor activities, including cycling, a great interest of his. He and his brother were slated to compete in a cycling event over the weekend in Colorado called Triple By-Pass.

The Panorama district is undergoing two major changes. An \$4 million upgrade of the athletic facilities in is progress. And, all students this fall will be given a technology tablet device.

The following questions were posed to the new mentor.

Why did you chose to become an educator? I always knew I wanted to be a teacher and coach. Even in high school and college I coached the local swim team.

Why you become a superintendent? After being as principal for seven years, the main attraction was having a posi-

itive affect on more kids educationally. Your day to day decisions for the most part have a greater impact on students’ education.

Role of a superintendent? Overall the best part of being as superintendent is building relationships with community members and employees that creates a work environment that’s positive and translates into better education.

Also, from a normal business standpoint, it is similar to a CEO. You deal with people and you deal with finances. Each day is different. Part of my job, too, is public relations, telling the positive stories about the district.

Your educational philosophy? The more hands on learning we can give kids, the more authentic learning they can have of the real world. If we can tie student learning to real world examples and make it meaningful, then that translates into better learning for kids.

Toughest part of administration? Trying to mediate situations where there is adult versus adult conflict. Bringing people together at the table is needed at times. It may not be an enjoyable conversation, but it needs to take place.

Most enjoyable? Just watching all the success stories. Tons of good things happen in a school every week. A lot of them don’t get shared. Something I try to do that is untraditional is sharing these positive things. For example, I took pic-



Shawn Holloway

tures today of 30 kids at basketball camp to post on our Facebook.

Major accomplishments? At Manson-Northwest Webster we started a one-

to-one laptop program, the first school in Iowa to do that as a non-Apple school. We were using PC devices. I spearheaded the project.

As a principal we did a lot with rigor and relevance there. We created a system that bought real world learning on as daily basis.

While you can’t call it an accomplishment, but closing a school at Gladbrook-Reinbeck really took a lot of hard work and was difficult. It was a tough decision that had to be made for that district as the school board and I took the needed steps.

Changes in education? Change is difficult because it looks different than you or I are used to. It’s kind of like we’re changing the game for kids, which can be difficult for parents to grasp.

Learning should be just more than looking at a worksheet and memorizing facts. Ultimately the goal is learning looks like everyday life. I see the future as blended learning between online learning, face-to-face learning and learning outside the classroom -- molding these three together.

What about Panorama? When I was researching the district, the one thing I really like was what it had done with Authentic Intellectual Work (AIW) and its commitment to staying the course. I think AIW is the foundation for good teaching.

HOLLOWAY, PAGE 4A

NEVER REPLACE YOUR ROOF AGAIN!



Metal Roofing from Fitzgerald Siding & Windows will add value, reduce your energy costs and best of all

LAST A LIFETIME!

Give us a call today!

641-755-3151

Serving Central Iowa Since 1998

Fitzgerald Siding & Windows

COMMERCIAL & RESIDENTIAL

2708 Highway 44 E • Guthrie Center

We specialize in Maintenance-Free

Windows✳Doors✳Siding✳Sunrooms✳Metal Roofing✳Garages
Cultured Stone✳Custom Remodeling✳Decks & Railing Systems

Gute
TREE SERVICE

Professional Tree
Care since 1959

*Servicing Panora
and Lake areas.*

**Commercial and
Residential**

Tree Removal • Pruning
Cable Bracing
Fertilizing • Stump Removal
Line Clearing • Shade Trees

FREE ESTIMATES

Insured &
Licensed Arborist

712-792-9009

615 W. 1st • Carroll

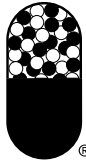
MEDICAP
Customer Appreciation
ice cream social
..... **july 17th 1-3 pm**

Thank you to our customers and the community for the continuous support, we truly enjoy serving area residents.

Come & Enjoy:

- **FREE** Root Beer Floats
- **FREE** Giveaways
- **Register to Win**
 - \$100 VISA Gift Card
 - \$25 Medicap Gift Card
- Join **FREE** Rewards Club

Everyone is invited!
We hope to see you there!



MEDICAP
PHARMACY®

615 E. Main St. • Panora • Call Us! 641-755-2312

PANORAMA
FROM PAGE 1A

want to watch and cheer on their team can enjoy a Community Watermelon Feed during the tournament.

Some of the same traditional events will also be offered during the weekend, including the annual Panorama Days 5K Fun Run, which returns with an around-town route this year on Friday at 7:00 p.m. Registration is 4:30-6:45 p.m. Online registration is available at www.GetMeRegistered/PanoramaDaysRun.

A Kids Cake Walk at 5:30, a Pedal Pull at 6:00 and the Bill Riley Talent Show at 7:00 all take

place on the Town Square Friday.

On Saturday, The Panorama Days parade is at 10:30 a.m. Following the parade, the Kid Zone will run from 11:30-3:30 with inflatables and other activities, including a Caricature Artist.

PJ's Drive-In will host a Classic Car Show from 11:00 a.m.-4 p.m.

Music will entertain visitors around the Gazebo on the Panora Town Square from 11:30 a.m. until 7:30 p.m. Saturday, including Stardusters, The Bengé Family, Waukeé Big Band, Dead men Singing, Glitter & Rust, The Gustafson's, Part of Four and 4 Shades of Grey.

Hoop It Up basketball competition will be held inside Vet's Gymnasium at 1:00 p.m.



LAKE TIMES FILE PHOTO

Matt Lukacs barefoot skis at last year's ski team show.

The annual Treasures & Beyond Flea Market will run 9:00 a.m.-4 p.m. on First Street near the Panora Library.

The Alumni Banquet is at 5:00 at the Panorama High School on Saturday. A street dance with music entertainment by "Sons of Gladys Kravitz" is from 9:00 p.m.-1 a.m.

On Sunday, the Panorama Junior Class will hold a breakfast fundraiser at the community building from 7:00 a.m.-12 noon. The Brethren Church will host a Gospel Musical Festival at 5:00 p.m. and a sandwiches and ice cream social following at 6:00 p.m.

HAPPENING
FROM PAGE 1A

Sarah Meinecke, who lives in Jamaica and completed an internship at the LPN last summer, now is a full-time LPN employee. Three days a week, usually Sunday, Monday and Tuesday, you'll find her at the front desk handling lodging reservations and other LPN business. She's also helping out in The Links and with special events. Meinecke graduated from Iowa State University in December with a bachelor's degree in event management.

Speaking of LPN employees, John Dinnebie, LPN general manager, says he's looking for some additional workers for The Links Restaurant and Lounge and to help with banquets and other special events. Applications are being taken now, with possible openings at any time, but with a particular need for this fall when summer help goes back to school. Contact him by calling the LPN at 641-755-2080 or by email at jdinnebie@lakepanorama.org.

New carpeting was installed in July in The Links lounge and dining room, the outside entrances to The Links and the banquet room, the front reception area and hallway on the main level. Additional new carpet is planned for the stairs and hallway in the lower level, and eventually the pro shop.

The new pool and spa continues to be a popular place. About 50 annual memberships have been sold, and daily fee receipts are strong. A reminder the pool is

available at no cost to Clover Ridge Interval Owners Association members, and guests staying in the LPN Inn and Suites. All others must either purchase an annual membership or pay the daily fee.

The LPN pro shop staff manages the pool from a check-in window near the pool. Snacks and drinks are available for purchase, including ice cream treats, chips, candy bars, pop, Gatorade, bottled water and canned beer. Sunscreen and lip balm also can be purchased. Food items from The Links restaurant are available in takeout containers. No glass is permitted, but beverages in plastic glasses also can be purchased in The Links.

A few slots remain for the annual LPN Mixed Couple tournament August 1-2, which is limited to the first 72 couples registered. This event brings in many couples from outside of the area to play at Lake Panorama National. Couples play as partners, with men from the white tees and women from the red tees. Both drive, then each plays a second shot with the other's ball. Choose the best ball and alternate shots from there. Cost is \$150 for LPN members and \$230 for non-members, which covers two days of golf, Saturday dinner and prizes. Shotgun starts will be 1 p.m. on Saturday and 9 a.m. on Sunday. Call the pro shop at 641-755-2024 for details.



Sarah
Meinecke

HOLLOWAY
FROM PAGE 3A

Our facilities are first class. And there a lot of potential in terms of growth and location.

Qualities you bring? Integrity

is the number one thing I bring to the job. There are times decisions have to be made that aren't always popular, but if they are right for students, staff and the community I'll stand by that.

I'm an honest person. I can be blunt and brutally honest, but people

know where they stand with me. I'm not going to say one thing to a person's face and turn around and say something different.

My knowledge of school finance is very good. I understand school finance and am able to forecast and budget trends.

Future Goals? There's not some glaring issue the district is facing. It's seeing what we have and building on it. Plus to publicize what we're doing.

The \$4 million athletic complex construction? The key is be-

ing smart enough not to think you have the answer. When I get a change order, I call Dave Arganbright (who overseas the project for the school).

One-On-One? There's a learning curve with one-to-one devices the first year and the change always produces as bit of fear with community and parents. There can be questions or people feeling uncomfortable. We need to be aware of these concerns. For me, I've seen one-to-one became part of the normal routine.

Complete TITLE Services

GUTHRIE COUNTY

since 1951

ABSTRACT COMPANY

110 N. 4th St. • Guthrie Center, IA 50115

Judy Hilgenberg

Lori Bennett

Kim Buttler

Jenn Hambleton

641-332-2339

Design • Installation • Construction

"More than a shovel and a truck."
We have the equipment to do the job right!

- Retaining walls • Walkways • Patios
- Seeding • Sodding • Grading
- Plant materials • Planting • Pruning
- Landscape Material • Affordable Quality
- Insured

"Don't pay too much for too little"

GREENSPIRE LANDSCAPING

Over 25 years of dependable service

Phone Dan 641-439-2482
or 641-757-1497.
Please leave a message.

ARBOR ARTISTICS TREE EXPERT COMPANY

OLD MASTERS NEIGHBORHOOD SERVICES
Complete Groundskeeping & Property Management

TREES:

- Removal & Stump Grinding/Mulching
- Pruning (Elevations, Shaping & Thinning) Cable & Bracing
- Pest & Disease Diagnosis & Treatment
- Consulting & Tree Inventory

Lawn & Garden / SHRUBS & HEDGES

- Mow • Trim • Shape • Weed & Feed
- Storm Damage • Fall Clean-Up
- Firewood • Hauling

FREE ESTIMATES

Bill Reese; ISA Certified

705 E. Church Street • Panora • 641-755-2140 or 515-943-0544
breese54@netins.net

Celebrating 35 yrs of Art, Science, Safety and Education in the Green Industry

THE PORT

ON LAKE PANORAMA

RESTAURANT, INN AND TIKI BAR

THE PORT IS NOW SERVING LUNCH!

WEDNESDAY-SATURDAY 11 a.m.-2 p.m.

Check Out Our Live Music Lineup For The Summer At

The Tiki Bar

JULY 17- Brad Morgan

JULY 18- Private Event

JULY 24- Zachary Freedom

JULY 25- Skeeter Creek

JULY 31- After Hours

AUGUST 1- Toaster

AUGUST 7- Saucy Jack

AUGUST 8- Landslide

AUGUST 14- Roger Burger

AUGUST 15- Sister Sara

Don't Forget To Join Us For Dinner And Our Great Sunday Brunch

Why Worry About Dinner On Monday Night-
Make Monday Night Your Takeout Night!
Call Ahead & Order To Go Receive
10% Off Your Entire Order

641-755-4240
experiencetheport.com
Follow us on Facebook!
5405 Chimra Road, Panora

LAKE PANORAMA BARGE SERVICE

641-755-3351
OFFICE

515-971-0226
DANNY'S CELL

lpbarge@att.net

Offering

Make Us Your First Call!

CHEF
FROM PAGE 1A

Preparing all food from scratch is Makens goal. “That’s always been my philosophy. It’s important to offer the freshest food possible. It’s the healthiest food, and it’s the best way to offer good food at a reasonable price,” he says.

Makens has lots of ideas for bringing fresh food and new menu items to the LPN. For now, he’s working with the current menu, while offering specials to see what appeals to diners. He plans to develop separate menus for the bar and the dining room, although items from either menu could be ordered in both locations.

For the bar menu, he envisions handmade appetizers, several specialty burgers, and simple tacos sold as singles or multiples. “I call these ‘food truck’ tacos. There would be a variety of fillings, including fish,” he says. “Because the pork loin sandwich is so popular and has a nice history here, it will have its own category, and be offered four or five different ways.”

Makens says he wants the dining room to become more of a “destination” and is planning a menu that he describes as “upscale casual. I want our dining menu to offer dishes that are different than all the other places you can eat around here,” he says.

To help develop this new

menu, Makens is offering dinner specials each Thursday, Friday and Saturday beginning at 5 p.m. Each week, the special dinner menu offers an appetizer, salad, sandwich, one or two entrees and a dessert.

“I’m tracking what sells well, and what people comment on the most,” Makens says. “That way I’ll be able to create a dinner menu that best suits the LPN clientele.” He welcomes feedback, and is in the process of developing a comment card so he can gather more information from guests at The Links.

Getting fresh ingredients for use in his “from scratch” kitchen is a passion of Makens. “I plan to use as much local ingredient as possible. I will be using Tori’s Angels Foundation produce as soon as it’s in season, and I’m looking for other local growers,” he says.

Next year, Makens would like to grow some of his own produce. For the last three years, he had a small produce company called Chef to Table Gardens and grew produce for Centro, Django, Zombie Burger and several other Des Moines restaurants. His produce also was on sale at Gateway Market.

Another idea he hopes to explore is finding a local farmer where he can graze some cattle for slaughter. “Beef has gotten really expensive, but we can offer good cuts of meat at a lower cost by growing and processing our own,” he says. For now, Makens is bringing in larger pieces of beef, then cutting and preserving

the cuts with special vacuum packaging.

Makens hopes to expand seafood offerings, and has made arrangements to bring in fresh salmon and other seafood three times a week. “The salmon and shrimp offerings have already proven popular. I’ll be trying other things such as mahi and scallops to get a feel for what people like,” he says.

The current breakfast menu, served each Saturday and Sunday, will get a makeover, with fewer items and a sharper focus on fresh foods. Down the road, Makens is going to try a Sunday brunch that would be served family style.

“We’ll start by doing this once a month. It will be a set menu, with a per-person price. Food will be brought to the table in bowls for passing, and it will be all-you-can-eat. When the bowls are empty, we’ll bring more if anyone is still hungry,” he says.

A big part of the LPN business is wedding receptions and other banquets, and Makens says he’s looking forward to working with this part of the operation. “I want this to be recognized as the perfect destination for weddings and other special events,” he says.

“Rather than having a set menu from which people need to choose, I’ll be meeting with those involved so they can tell me what they’d like to have and how much they want to spend,” he says. “That way I can write a simple menu that is customized for each event.”

Yet with more attention being paid to banquets, Makens doesn’t want it to mean losing regular customers to The Links. “I’m hoping we can find ways to keep the bar and dining room open more often, even with a banquet underway,” he says. “Or we’ll look for ways to offer alternatives, such as outdoor dining when the weather allows.”

Makens also is focused on the physical aspects of the LPN’s kitchen and dining areas. He’s reorganized and streamlined the current kitchen, and identified equipment changes needed to make it more efficient and cost effective. He’s also looking at ways to upgrade the chairs and décor in the dining room.

He’s purchased at auction plates and other dishes that complement the dinner specials he’s offering. “Plates and the food presentation are really important aspects of both the restaurant and the banquets,” he says.

Listening to Makens can make a person tired ... so many great ideas, and so much to accomplish. But he says that’s part of the appeal of the LPN position, and one of the things he likes most about being a chef.

“Every day I get to make thousands of little decisions that impact others,” he says. “Every day is different, and the pace changes throughout the day. There is a real feeling of satisfaction and accomplishment when the kitchen gets ‘slammed’ and we survive. I can’t imagine doing anything else.”

OPEN
FROM PAGE 1A

Many past hole sponsors are returning for 2015, and new ones are being recruited. Hole sponsorships are \$200. Hole sponsors receive a color sign with logo, two tickets to the pro-am draw party and recognition on the daily pairing sheets.

So far, new hole sponsors for 2015 include Peerless Supply by Bruce Iler, in memory of Chuck Iler; Berkshire Hathaway Realty by Rod Robson; Lakeshore Dentistry, Dr. Larry Spray DDS; Nevitt Realty by Bob Nevitt; Edward Jones by Dave Grove; Vivid Tax Advisory Services by Cameron McCarty; and Kane Powell Electric.

One of the things that makes this tournament special for golfers who travel to Lake Panorama is free housing offered in host homes. Again this year, Kent and Shirley Stephenson are coordinating housing requests from players. While many players already have been placed, requests continue to come in. If you have space available, and would consider hosting one or more players, contact the Stephensons at 641-755-3787.

Volunteers are needed to work all three days of the tournament. Those who have volunteered in the past are asked to wear one of the shirts they received previously. New volunteers will receive a shirt and hat, while supplies last. All volunteers will receive some appreciation gifts, are invited to a kickoff barbecue at Spikes on August 11 beginning at 5 p.m., and will receive



LAKE TIMES FILE PHOTO

Javier Sanchez won the senior division of the Brokers International, Ltd Iowa Open, last year at Lake Panorama National Golf Course. Sanchez, a professional, defeated an amateur senior in a two-hole playoff to take the title.

a meal and drink ticket to redeem at Spikes on days they work.

Julie and Larry Wykoff and Reuben Hanson are coordinating volunteers. Signup forms are available in the LPN pro shop, at Spikes, and on the Brokers International Iowa Open website at www.iowaopen.com. Those who have volunteered in the past can email Julie at jaalen9@aol.com with days and times they would like to work.

A pro-am August 13 precedes the three-day main event. Thirty-one teams are set to compete that day. Each team will be paired with a PGA professional at a draw party August 12.

For more information, contact Soreide at gsoreide@netins.net or cell (515) 240-4272.

-FOR SALE-

It comes with great sadness that we have decided to sell our rapidly growing business so that we can have more time as a family. This is a well established custom lettering, sign and banner making business. We have a large customer database of files which will allow you to replicate for future business. All tools and equipment is included in this sale.

WE WILL STILL CONTINUE TO TAKE AND FULFILL ORDERS UNTIL THE BUSINESS IS SOLD.

We appreciate all the customers who we have had the pleasure of working with and want to say **“Thank You”** for your support and business.

Serious Inquires Only! Please contact Jessica Peters at 641-757-1651



Brandon & Jessica Peters, Owners • Linden, Iowa • 641-757-1651
cornfedgraphics@gmail.com



**Your property should
reflect your high standards.**

**Our reputation
speaks for
itself.**

*We’ve been
providing quality
landscaping,
beaches and rocking
at Lake Panorama
for over 30 years.*



Rock Walls • Beaches • Shorelines
Crawler-loaders ~ Trackhoes ~ Loaders ~ Trucks

Dean A. Stanley, owner
Panora • 641-757-0205

STANLEY
EXCAVATION

Dinnebier inducted into Waterloo Golf Hall of Fame

By SUSAN THOMPSON
Lake Times staff

John Dinnebier, Lake Panorama National general manager and director of golf, has been inducted into the Waterloo Golf Hall of Fame. He was honored July 18 in conjunction with the 82nd annual Waterloo Open.

Dinnebier was born in 1967 in Waterloo, and began his golf career at the age of 3 playing golf with his father and two brothers. His parents, Paul and Zelda, continue to live in Waterloo.

While growing up in Waterloo, Dinnebier played most of his golf at Gates Park. He was successful playing, and winning, many junior events. He attended East High School where he played football, basketball and golf. He had a successful high school career, with his biggest highlight representing East High twice at the 4A state golf championships.

Dinnebier was recruited

to play golf at the University of Nebraska in Lincoln, and was the Number One player for the Huskers during the years 1985-1989. He qualified as an individual his junior year and played in the NCAA Division One Championships in 1988. He won the Waterloo Open in 1988 and 1989. He graduated from the University of Nebraska in 1990 with a business degree.

Dinnebier began his professional golf career working as an assistant pro at Red Carpet Golf in Waterloo. After three years, he accepted a position as assistant golf pro at Des Moines Golf and Country Club.

After five years at Des Moines Golf, Dinnebier was named head golf professional at Lake Panorama National Golf Re-



John Dinnebier

sort and Conference Center. He holds the LPN course record of 61 – 11 strokes under par. He was promoted to LPN general manager in 2002, and also remained as head pro until 2006.

Dinnebier has won numerous Iowa PGA section tournaments. He qualified for the PGA National Professional Championship in both 2011 and 2014. He has been named the Iowa PGA Section Resort Merchandiser of the Year five times, most recently in 2013. He was the Iowa Section PGA Golf Professional of the Year in 2010, and served on the Iowa PGA board of directors from 2008 through 2011.

Dinnebier was recognized as the Iowa Golf Association Golf Professional of the Year in 2002, and the Iowa Golf Association Club Manager of the Year in 2007. He and his wife Toni have two children, Katie and Tanner. The family lives in West Des Moines, where both children are active in sports.

Volunteers Contribute to Golf Course Beauty

Lake Times staff

The two Lake Panorama golf courses — Lake Panorama National and Panorama West — boast flowers throughout the golf season on tee boxes and other locations. Most of these colorful displays are the result of dedicated volunteers, who not only purchase and plant flowers, but also weed, water and decorate.

At Panorama West, there are raised brick planters on each tee box. Volunteers for 2015 are: #1 - Virgil and Barb Hoehne; #2 - Bob and Betty White for the par 4 tee, Bill and Claudette Woller for the par 3 tees; #3 - Jan Hoobin; #4 - Lynn and Jan Reinecke; #5 - John and Marilyn Seward; #6 - Dick and Eileen Ellis; #7 - John and Sue Crawmer; #8 - Jim and Emily Spradling; and

#9 - Jay and Sue Merryman.

Maureen Lubeck planted and maintains flowerpots and beds around the Panorama West pro shop. Paul McCool and Helen McCord maintain the birdhouses located throughout the golf course.

At Lake Panorama National this season, Jolene Wright planted and maintains flowerpots at Spikes and Linda Reis is assisting with flowerbeds surrounding the building. Reis also maintains the flowerbed along the east side of the #5 pond. Julie Wykoff has the flowerbeds surrounding the on-course bathroom between #4 and #5.

Volunteers for tee box flowerbeds are: #1 - Carolyn Koberg, Barb Wollner; #2 - Greg and Tricia Steffen; #3 - Doug and Dee Eckley, Lorrie Motsick; #4 - Pam Parsons, Shirley Ste-

phenson; #5 - Darwin and Janet Luing; #6 - Jan Hardy; #7 - Darwin and Janet Luing for the back tees, Kathy Moline for the forward tee; #8 - Sue Greiner; and #9 - Tracy Welberg, Deb Douglass.

On the back nine, volunteers are: #10 - Julie Clausen; #11 - Lisa Grossman, Shanell Wagler; #12 - Laura Preussel; #13 - Brandon Brehmer for the restroom and back tees, and Barb Wollner for the forward tee; #14 - John and Susan Bruckshaw; #15 - Carla Fitzgerald; #16 - Dave and Deanie Thomas, John and Marilyn Coghlan; #17 - Kim Kent, Dee Tometich.

Thanks to these volunteers. There are additional opportunities to help. Those interested can contact either pro shop to be put in touch with volunteer coordinators.



Dirt Is No Match For Us!

- Residential & Commercial
- Auto & RV's
- Upholstery Scotch Guarding
- Air Duct & Dryer Vent Cleaning

YOUR FAMILY DESERVES FRESH CLEAN CARPETS AND UPHOLSTERY

Call Us For A Free Quote!

Eric Wilson, Owner • 515-758-3856
No job too small... or too big!





Over 20 years experience!

It's going to be a Great Boating Season on Lake Panorama!

Be ready for it in a new 2015

Shop the competition and compare our very competitive pricing on 2015 boats.

**FOUR WINNS**



18 - 2015 Models in Stock
18' to 23'

See the ALL NEW for 2015 180, 190, 200, 210 & 230

MasterCraft

2015 WAKE BOARD BOATS
See the all NEW NXT In Stock Now!



MOOMBA

WAKE BOARD BOATS Fully Equiped



Priced from \$49,000

MARINE GRADE GASOLINE WITH SG-2000 ANTI-KNOCK FORMULA.
CHECK OUT OUR NEW LOWER PRICING FOR 2015!



**Hurricane**

3 Deck Boats in Stock
See a Pontoon and Deck Boat - All in One!
Amazing Boat Deal
Priced from \$34,976
Full Luxury Deck Boats in 22' to 24'

Kawasaki

Let the good times roll.
Jet Skis - 16 in Stock
See the economical 160hp STX-15F three passenger
All new design for 2015, the 1500 ULTRA Luxury Three Passenger

**Godfrey PONTON BOATS**

16 Sweetwater & Aquapattios and the San Pan Luxury Pontoon in Stock

20' Model Priced from \$21,978
Sweetwater 200 Cruise with Mercury 75
5 Triple Tube Performance Pontoons in Stock!
Amazing, Smooth Ride & Handling
Luxury Performance Models in Stock
240 Aqua Patio with Honda 150
250 San Pan with Honda 200



Shore Station Boat Lifts • VW Docks • Service and Repair
Expanded Boat Storage, Reserve Your Spot
Competitive Storage Rates for 2015

COULTER PANORAMA MARINE

Serving Lake Panorama Since 1982

641-755-2920 • email: coulters@netins.net

See our inventory at www.cpmboats.com

Q&A: John Rutledge, general manager of Lake Panorama Association

AUGUST 4 SPECIAL ELECTION WILL IMPACT GUTHRIE COUNTY’S FUTURE

By **SUSAN THOMPSON**
Lake Times staff

A special election August 4 will give registered voters in Guthrie County the chance to change the way members of the county’s Board of Supervisors are chosen. The special election is the result of a successful petition drive organized by a nonpartisan group of Guthrie County voters.

Iowa law outlines a process by which citizens can seek a change in a county’s election plan for its Board of Supervisors. The first step is the filing of a petition signed by a certain percentage of eligible voters. In Guthrie County, that meant about 450 signatures were needed.

About 600 signatures were collected, and organizers delivered the petition to Guthrie County May 21. According to Iowa Code, once a county Board of Supervisors receives a valid petition calling for a vote on this issue, a special election must be held.

Iowa law includes three options for electing members of a county Board of Supervisors. The current method has Guthrie County divided into five equal-population districts, and only people living within each district can vote for candidates within that district. Another option removes the district residence requirements and all voting is done at large.

PLAN TWO is the option endorsed by those who organized the petition drive. It allows all county voters to elect one candidate from each equal-population district.

In this month’s Q&A, John Rutledge, LPA general manager, talks about the impact the August 4 special election could have on Guthrie County’s future.

Q: Those who know you well know you're passionate about local politics. How did you develop this interest?

A: My interest in local politics came about in 2004, when I was encouraged to run for Guthrie County Auditor. Trish and I decided to take on that challenge, and I was fortunate enough to win the primary and general elections that year. I took office in January of 2005 and served until I accepted the LPA general manager role in 2007.

Serving as the county auditor was a fascinating experience. I had always followed national politics, but never really appreciated the significant impact local government has on the people of Guthrie County. I was instantly committed to being involved in local politics as a means of making Guthrie County a better place to work and live.

Q: How significant is the August 4 ballot issue on supervisor election plans?

A: Simple answer – it’s HUGE.

Q: That's a strong answer. Why do you feel that way?

A: I was born and raised in Guthrie County and am proud to call it my home. I love the landscape and I love the people. However, we have to be honest and acknowledge rural Iowa and small-town Iowa continue to struggle for survival.

Guthrie County is faring better than most ... but the storm hasn’t passed. I believe Guthrie County needs to be progressive to ensure this is a viable place to live and work 25 years from now. If I’m right, it’s going to take a lot of good leadership to make this happen.

This election is going to determine what kind of leadership we expect from the Guthrie County board of supervisors. The current plan promotes a format that is inherently territorial, and thus, frequently divided. That type of infighting doesn’t benefit anyone. I believe it’s time to make a change.

Q: Which plan are you supporting, and why do you think it's best?

A: I will choose PLAN TWO on my ballot. I think it’s really the best of both worlds.

PLAN TWO will ensure each district continues to have supervisors who are familiar with the constituents and specific issues of their home district. The diversity of Guthrie County makes this an important component of good government.



PLAN TWO also will make supervisors accountable to ALL voters. Being accountable to all voters will ensure each supervisor’s

primary focus is on making decisions that benefit the county as a whole.

Q: What would you say to someone who believes the current system is working just fine?

A: This brings to mind one of my favorite quotes. Robert Kennedy once said “Progress is a nice word. But change is its motivator. And change has its enemies.”

I think everyone can agree we want to be progressive in Guthrie County. We all live here, we’re all invested here and we all want to see the county prosper. But, it’s human nature to view change as somewhat

intimidating.

I would encourage voters to recognize we’re all in this together. This ballot presents an opportunity for us to set Guthrie County on a progressive course for our future.

Q: How do you expect this election will turn out?

A: The beauty and intrigue of politics is that we won’t know until all the votes are counted. We are a small county and a few votes can make a big difference. One thing is certain in my mind; this will define the direction of Guthrie County politics for the foreseeable future.

Voting options for August 4 Special Election

Lake Times staff

Voters have several options to participate in the August 4 special election that could change the way members of the Guthrie County Board of Supervisors are chosen. The special election is the result of a successful petition drive organized by a nonpartisan group of Guthrie County voters.

Now that the vote is scheduled, a “Choose Plan Two” committee has been formed. The committee continues to represent a bipartisan effort with Steve Brannan and Cheryl Castile splitting committee duties. Brannan, a registered Democrat, is serving as chair, with Castile, a registered Republican, serving as committee treasurer.

Those who consider their Guthrie County home their primary residence can register to vote in Guthrie County. Voter registration forms are available from the Guthrie County Auditor’s office, on the Iowa Secretary of State’s website, or

can be completed in person at the Auditor’s office. Voter registration also can be done at the polls on August 4.

The first option for voting in this special election is to vote absentee. Absentee ballot request forms are available from the Guthrie County Auditor’s office, on the Guthrie County website at www.guthrie-county.org/elections, or by emailing the Choose Plan Two committee at chooseplan2@gmail.com.

Completed absentee ballots must be postmarked by midnight August 3, or can be dropped off at the Auditor’s office before the polls close on August 4.

A second option is to vote in person at the Guthrie County Auditor’s office weekdays 8 a.m. to 4:30 p.m. between now and the close of business on August 3.

The third option is for voters to go to their standard polling places August 4. Each resident 18 years of age or older is eligible to vote. The polls will be open 7 a.m. to 8 p.m.

The Choose Plan Two committee is encouraging a vote for Plan Two for three main reasons.

Plan Two maintains equal-population districts, which ensures each district has one supervisor on the board.

Plan Two would make supervisors accountable to all voters, not just the voters in a single district.

Plan Two gives supervisors greater incentive to work for the good of the entire county, not just what’s popular in their district.

If voters choose a plan different than the current one, all five supervisors’ spots will be open in the 2016 general election, and the plan will remain in effect for at least six years.

For more information, contact Steve Brannan at 641-755-3046 or Cheryl Castile at 641-755-2239.



Van Houten Barge Service

- Boat lift and dock installation, removal and repair
- Custom built cantilever docks
- Rip-rap and shoreline work

Customer Service is our #1 goal.
We want to get you boating as soon as possible.

--Call for free estimates--

Mark Van Houten
(515) 975-7016 or
(641) 431-4002

2015 POOL MEMBERSHIPS

**Come Out And Enjoy
The New Pool & Hot Tub!**

2015 Rates

Tax Inclusive

Single LPA Member.....	\$75.00
Non-Member.....	\$85.00
Family LPA Member.....	\$130.00
Non-Member.....	\$145.00
Daily Fee.....	\$3.00

For More Information call
641-755-2080 or 800-879-1917



Jerrod Niemann



Lee Brice



Granger Smith



Chris Young



Stoney LaRue

RUCKUS

FROM PAGE 2A

“Safety and a good time are our top two concerns,” Sheeder said. “We’ll have everything necessary to address any safety concerns.”

Sheeder was also involved in planning the River Bank Bash in Des Moines, a similar, larger event that ended up being can-

celed because of weather. Anyone who had bought tickets to that event can transfer them to the River Ruckus.

He added that although he was involved with planning the large Des Moines event, the Guthrie River Ruckus won’t be going anywhere — and it will see continued changes in the future.

“With seven years under our belt, we’ve learned a lot,” Sheeder said.



LAKE TIMES FILE PHOTO

Thousands of fans gather during Chris Cagle’s performance at last year’s Guthrie River Ruckus. Cagle will perform again at this year’s event, which will also include headliners Chris Young and Lee Brice.



Josh Abbott Band



Josh Thompson




Zach Stone



Casey Muessigmann



Chris Cagle




Allen Family Chiropractic, PC

Providing Health Solutions Through Chiropractic Care

It's Time For A Change - To Start Feeling Better!

Call 641-747-8247 Today



Dr. Andrew W. Allen
108 N. 3rd St., Guthrie Center
Insurance accepted including Medicare and Medicaid

CDI Drywall INC.

SPECIALIZING IN HIGH END FINISHES
-Including Smooth Wall

- New Construction • Remodels
- Basements & Repairs

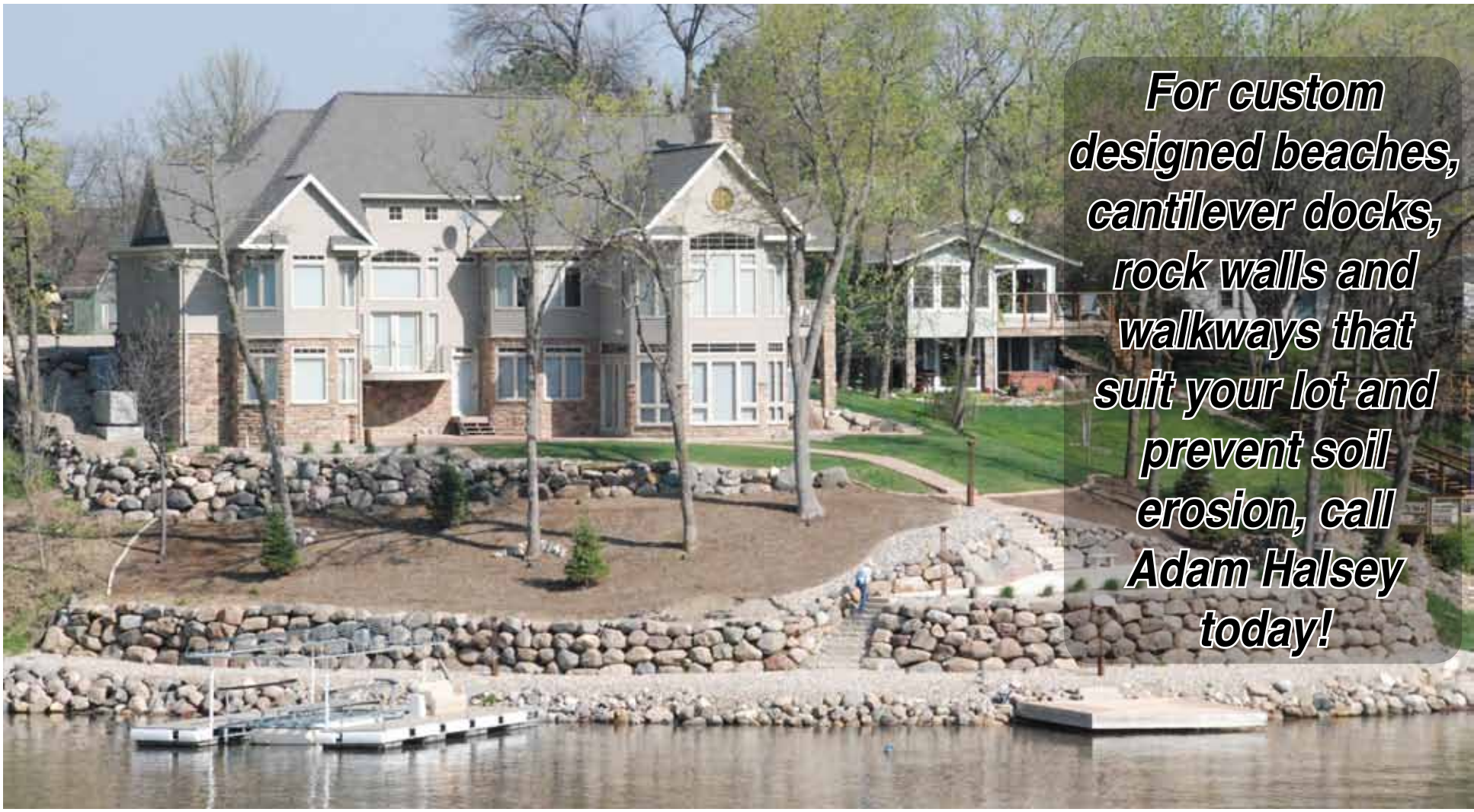
Call Chad Cummings 515-391-1735
References Available



werts
window cleaning

Joshua Werts
www.wertswindowcleaning.com
josh@wertswindowcleaning.com
(712) 350-0121 (712) 623-4603

Distinctive Shorelines...



For custom designed beaches, cantilever docks, rock walls and walkways that suit your lot and prevent soil erosion, call Adam Halsey today!

- X Beaches X Rip Rap Shoreline
- X Steps into the Lake
- X Boulder Walls X Finish Grading
- X Trucking Rock
- X Black Dirt X Clay Fill
- X Tree Removal X Lot Clearing

HALSEY EXCAVATING

ADAM HALSEY
Cell Phone: 515-491-9351 • Home: 641-747-3236
✓ BACKHOE ✓ DUMP TRUCK ✓ SKID LOADER

CLIP & SAVE

CLIP & SAVE

CLIP & SAVE

CLIP & SAVE

Dale Valley Winery Live Music Saturdays!

July 18, Saturday: Noon-9:30pm **WINESTOCK!**
\$10/person, No outside alcohol or pets. "Home Grown Locals" featuring music by Gravel Travel, Dirt Road Divide, Mason Jar & Gypsy Outlaws, Four Shades of Gray and Stone Thro. Food vendor on site and local artisans! Stay late for the lighted paper lantern launch!

August 8, Saturday: Larry Berenguel 2:30pm-5:30pm

August 9, Sunday: "Second Sunday" Open Mic Open to musicians of all skill level 2:00pm-5:00pm

August 15, Saturday: Jessie & King Rhythml 2:30pm-5:30pm

August 19, Wednesday: Wine & Whimsy 6:00pm-8:00pm

Rag Rug Making (part 2) \$15 includes supplies and first glass of wine!

August 22, Saturday: Private Event 4-11pm, tasting room open 10am-3pm.

www.dalevalleyvineyard.com
3097 285th St. Stuart, IA 50250
515.523.2199
Like us on Facebook!

CLIP & SAVE

Let Us Take Care Of The Details

Oil change special

JULY SPECIAL

Car or Truck \$24.95

INCLUDES VACUUM DETAILING

Oil Changes
Tune-Ups
Mower Blade Sharpening

INTERSTATE BATTERIES Interstate & Deka Batteries available!

Bates SMALL ENGINE SERVICE
Wilbur Bates 641-757-1243 Panora

Detail & Tires

SUV's, Cars, Trucks

"Big City Cleaning With Small Town Price"

Full Detail.....	\$99.95
Interior Only.....	\$45.00
Exterior Only.....	\$65.00
Buffing.....	\$50.00
Headlight Cleaning.....	\$25.00

Call Cory Bates
641-757-7016

Immediately In-Home Daycare Openings Little Farmhands Daycare

I'm CPR, First Aid, Universal Precaution, and Mandatory Reporter Certified. We are a pet-friendly, but smoke-free home. *I'm currently accepting all ages. I have 18 years of experience in child care.*

I offer breakfast, lunch, and snacks. While in my care, we will work on ABC's, 123's, shapes, colors, and more. We also have outside time as long as the weather cooperates.

A great location for parents commuting to Des Moines metro area.

I am located east of Panora 2 miles off of Hwy. 44.

For more information please call me, Jessica Peters, at 641.757.1651 or email at Littlefarmhandsdaycare@gmail.com

STAY COOL

WITH A NEW AC SYSTEM.

RELY ON RUUD™

GET ENERGY STAR® PRODUCTS and save on utility bills!

SAVE MONEY with high-efficiency Ruud HVAC systems.

RUUD AIR CONDITIONERS

- ✓ RELIABLE COOLING
- ✓ QUALITY-BUILT
- ✓ HIGH-EFFICIENCY

2164 Hwy 25 • Guthrie Center (641) 332-2198

DOUG'S PLUMBING & HEATING

In keeping with its policy of continuous progress and product improvement, Ruud reserves the right to make changes without notice.

PEOPLES

Trust & Savings Bank

Member FDIC

people first banking

Support the bank that supports your community.

Serving Iowa since 1917.

Adel • Clive • Grand Junction
Guthrie Center • Jefferson
Ogden • Rippey • Scranton
Waukee

www.ptsbank.com

800-891-9389

Interest Tiers	APY*
\$1,500-\$24,999.99	.35%
\$25,000-\$49,999.99	.45%
\$50,000-\$99,999.99	.55%
\$100,000-\$249,999.99	.65%
\$250,000 and up	.75%

* The Annual Percentage Yield (APY) is accurate as of 10/01/2014 and subject to change after account opening. Minimum balance to obtain APY is \$1,500. Fees may reduce earnings. Contact an employee about fees and the terms of the account.

Value.

More than you expected for less than you thought.

Kubota L2501DT Compact Tractor

PAYMENTS AS LOW AS

\$199.99**

PER MONTH!

With **0% A.P.R.** For **60 Months***

On New Kubota L2501DT 4WD Compact Tractors. Hurry, offers end 7/31/15.

CAPITAL CITY EQUIPMENT CO.

5461 N.W. 2nd Street
Des Moines, IA 50313
515-243-3353

www.capitalcityequipmentcompany.com

*50 down, 0% A.P.R. for 60 months on new Kubota EX, B, L (excluding L2014), M Series (excluding M5, M Name, M65, 6110S, and 6060KCL models), KX001-A, KX02-A, KX03-A, KX04-A, KX05-A, KX06-A, KX07-A, KX08-A, KX09-A, KX10-A, KX11-A, KX12-A, KX13-A, KX14-A, KX15-A, KX16-A, KX17-A, KX18-A, KX19-A, KX20-A, KX21-A, KX22-A, KX23-A, KX24-A, KX25-A, KX26-A, KX27-A, KX28-A, KX29-A, KX30-A, KX31-A, KX32-A, KX33-A, KX34-A, KX35-A, KX36-A, KX37-A, KX38-A, KX39-A, KX40-A, KX41-A, KX42-A, KX43-A, KX44-A, KX45-A, KX46-A, KX47-A, KX48-A, KX49-A, KX50-A, KX51-A, KX52-A, KX53-A, KX54-A, KX55-A, KX56-A, KX57-A, KX58-A, KX59-A, KX60-A, KX61-A, KX62-A, KX63-A, KX64-A, KX65-A, KX66-A, KX67-A, KX68-A, KX69-A, KX70-A, KX71-A, KX72-A, KX73-A, KX74-A, KX75-A, KX76-A, KX77-A, KX78-A, KX79-A, KX80-A, KX81-A, KX82-A, KX83-A, KX84-A, KX85-A, KX86-A, KX87-A, KX88-A, KX89-A, KX90-A, KX91-A, KX92-A, KX93-A, KX94-A, KX95-A, KX96-A, KX97-A, KX98-A, KX99-A, KX00-A, KX01-A, KX02-A, KX03-A, KX04-A, KX05-A, KX06-A, KX07-A, KX08-A, KX09-A, KX10-A, KX11-A, KX12-A, KX13-A, KX14-A, KX15-A, KX16-A, KX17-A, KX18-A, KX19-A, KX20-A, KX21-A, KX22-A, KX23-A, KX24-A, KX25-A, KX26-A, KX27-A, KX28-A, KX29-A, KX30-A, KX31-A, KX32-A, KX33-A, KX34-A, KX35-A, KX36-A, KX37-A, KX38-A, KX39-A, KX40-A, KX41-A, KX42-A, KX43-A, KX44-A, KX45-A, KX46-A, KX47-A, KX48-A, KX49-A, KX50-A, KX51-A, KX52-A, KX53-A, KX54-A, KX55-A, KX56-A, KX57-A, KX58-A, KX59-A, KX60-A, KX61-A, KX62-A, KX63-A, KX64-A, KX65-A, KX66-A, KX67-A, KX68-A, KX69-A, KX70-A, KX71-A, KX72-A, KX73-A, KX74-A, KX75-A, KX76-A, KX77-A, KX78-A, KX79-A, KX80-A, KX81-A, KX82-A, KX83-A, KX84-A, KX85-A, KX86-A, KX87-A, KX88-A, KX89-A, KX90-A, KX91-A, KX92-A, KX93-A, KX94-A, KX95-A, KX96-A, KX97-A, KX98-A, KX99-A, KX00-A, KX01-A, KX02-A, KX03-A, KX04-A, KX05-A, KX06-A, KX07-A, KX08-A, KX09-A, KX10-A, KX11-A, KX12-A, KX13-A, KX14-A, KX15-A, KX16-A, KX17-A, KX18-A, KX19-A, KX20-A, KX21-A, KX22-A, KX23-A, KX24-A, KX25-A, KX26-A, KX27-A, KX28-A, KX29-A, KX30-A, KX31-A, KX32-A, KX33-A, KX34-A, KX35-A, KX36-A, KX37-A, KX38-A, KX39-A, KX40-A, KX41-A, KX42-A, KX43-A, KX44-A, KX45-A, KX46-A, KX47-A, KX48-A, KX49-A, KX50-A, KX51-A, KX52-A, KX53-A, KX54-A, KX55-A, KX56-A, KX57-A, KX58-A, KX59-A, KX60-A, KX61-A, KX62-A, KX63-A, KX64-A, KX65-A, KX66-A, KX67-A, KX68-A, KX69-A, KX70-A, KX71-A, KX72-A, KX73-A, KX74-A, KX75-A, KX76-A, KX77-A, KX78-A, KX79-A, KX80-A, KX81-A, KX82-A, KX83-A, KX84-A, KX85-A, KX86-A, KX87-A, KX88-A, KX89-A, KX90-A, KX91-A, KX92-A, KX93-A, KX94-A, KX95-A, KX96-A, KX97-A, KX98-A, KX99-A, KX00-A, KX01-A, KX02-A, KX03-A, KX04-A, KX05-A, KX06-A, KX07-A, KX08-A, KX09-A, KX10-A, KX11-A, KX12-A, KX13-A, KX14-A, KX15-A, KX16-A, KX17-A, KX18-A, KX19-A, KX20-A, KX21-A, KX22-A, KX23-A, KX24-A, KX25-A, KX26-A, KX27-A, KX28-A, KX29-A, KX30-A, KX31-A, KX32-A, KX33-A, KX34-A, KX35-A, KX36-A, KX37-A, KX38-A, KX39-A, KX40-A, KX41-A, KX42-A, KX43-A, KX44-A, KX45-A, KX46-A, KX47-A, KX48-A, KX49-A, KX50-A, KX51-A, KX52-A, KX53-A, KX54-A, KX55-A, KX56-A, KX57-A, KX58-A, KX59-A, KX60-A, KX61-A, KX62-A, KX63-A, KX64-A, KX65-A, KX66-A, KX67-A, KX68-A, KX69-A, KX70-A, KX71-A, KX72-A, KX73-A, KX74-A, KX75-A, KX76-A, KX77-A, KX78-A, KX79-A, KX80-A, KX81-A, KX82-A, KX83-A, KX84-A, KX85-A, KX86-A, KX87-A, KX88-A, KX89-A, KX90-A, KX91-A, KX92-A, KX93-A, KX94-A, KX95-A, KX96-A, KX97-A, KX98-A, KX99-A, KX00-A, KX01-A, KX02-A, KX03-A, KX04-A, KX05-A, KX06-A, KX07-A, KX08-A, KX09-A, KX10-A, KX11-A, KX12-A, KX13-A, KX14-A, KX15-A, KX16-A, KX17-A, KX18-A, KX19-A, KX20-A, KX21-A, KX22-A, KX23-A, KX24-A, KX25-A, KX26-A, KX27-A, KX28-A, KX29-A, KX30-A, KX31-A, KX32-A, KX33-A, KX34-A, KX35-A, KX36-A, KX37-A, KX38-A, KX39-A, KX40-A, KX41-A, KX42-A, KX43-A, KX44-A, KX45-A, KX46-A, KX47-A, KX48-A, KX49-A, KX50-A, KX51-A, KX52-A, KX53-A, KX54-A, KX55-A, KX56-A, KX57-A, KX58-A, KX59-A, KX60-A, KX61-A, KX62-A, KX63-A, KX64-A, KX65-A, KX66-A, KX67-A, KX68-A, KX69-A, KX70-A, KX71-A, KX72-A, KX73-A, KX74-A, KX75-A, KX76-A, KX77-A, KX78-A, KX79-A, KX80-A, KX81-A, KX82-A, KX83-A, KX84-A, KX85-A, KX86-A, KX87-A, KX88-A, KX89-A, KX90-A, KX91-A, KX92-A, KX93-A, KX94-A, KX95-A, KX96-A, KX97-A, KX98-A, KX99-A, KX00-A, KX01-A, KX02-A, KX03-A, KX04-A, KX05-A, KX06-A, KX07-A, KX08-A, KX09-A, KX10-A, KX11-A, KX12-A, KX13-A, KX14-A, KX15-A, KX16-A, KX17-A, KX18-A, KX19-A, KX20-A, KX21-A, KX22-A, KX23-A, KX24-A, KX25-A, KX26-A, KX27-A, KX28-A, KX29-A, KX30-A, KX31-A, KX32-A, KX33-A, KX34-A, KX35-A, KX36-A, KX37-A, KX38-A, KX39-A, KX40-A, KX41-A, KX42-A, KX43-A, KX44-A, KX45-A, KX46-A, KX47-A, KX48-A, KX49-A, KX50-A, KX51-A, KX52-A, KX53-A, KX54-A, KX55-A, KX56-A, KX57-A, KX58-A, KX59-A, KX60-A, KX61-A, KX62-A, KX63-A, KX64-A, KX65-A, KX66-A, KX67-A, KX68-A, KX69-A, KX70-A, KX71-A, KX72-A, KX73-A, KX74-A, KX75-A, KX76-A, KX77-A, KX78-A, KX79-A, KX80-A, KX81-A, KX82-A, KX83-A, KX84-A, KX85-A, KX86-A, KX87-A, KX88-A, KX89-A, KX90-A, KX91-A, KX92-A, KX93-A, KX94-A, KX95-A, KX96-A, KX97-A, KX98-A, KX99-A, KX00-A, KX01-A, KX02-A, KX03-A, KX04-A, KX05-A, KX06-A, KX07-A, KX08-A, KX09-A, KX10-A, KX11-A, KX12-A, KX13-A, KX14-A, KX15-A, KX16-A, KX17-A, KX18-A, KX19-A, KX20-A, KX21-A, KX22-A, KX23-A, KX24-A, KX25-A, KX26-A, KX27-A, KX28-A, KX29-A, KX30-A, KX31-A, KX32-A, KX33-A, KX34-A, KX35-A, KX36-A, KX37-A, KX38-A, KX39-A, KX40-A, KX41-A, KX42-A, KX43-A, KX44-A, KX45-A, KX46-A, KX47-A, KX48-A, KX49-A, KX50-A, KX51-A, KX52-A, KX53-A, KX54-A, KX55-A, KX56-A, KX57-A, KX58-A, KX59-A, KX60-A, KX61-A, KX62-A, KX63-A, KX64-A, KX65-A, KX66-A, KX67-A, KX68-A, KX69-A, KX70-A, KX71-A, KX72-A, KX73-A, KX74-A, KX75-A, KX76-A, KX77-A, KX78-A, KX79-A, KX80-A, KX81-A, KX82-A, KX83-A, KX84-A, KX85-A, KX86-A, KX87-A, KX88-A, KX89-A, KX90-A, KX91-A, KX92-A, KX93-A, KX94-A, KX95-A, KX96-A, KX97-A, KX98-A, KX99-A, KX00-A, KX01-A, KX02-A, KX03-A, KX04-A, KX05-A, KX06-A, KX07-A, KX08-A, KX09-A, KX10-A, KX11-A, KX12-A, KX13-A, KX14-A, KX15-A, KX16-A, KX17-A, KX18-A, KX19-A, KX20-A, KX21-A, KX22-A, KX23-A, KX24-A, KX25-A, KX26-A, KX27-A, KX28-A, KX29-A, KX30-A, KX31-A, KX32-A, KX33-A, KX34-A, KX35-A, KX36-A, KX37-A, KX38-A, KX39-A, KX40-A, KX41-A, KX42-A, KX43-A, KX44-A, KX45-A, KX46-A, KX47-A, KX48-A, KX49-A, KX50-A, KX51-A, KX52-A, KX53-A, KX54-A, KX55-A, KX56-A, KX57-A, KX58-A, KX59-A, KX60-A, KX61-A, KX62-A, KX63-A, KX64-A, KX65-A, KX66-A, KX67-A, KX68-A, KX69-A, KX70-A, KX71-A, KX72-A, KX73-A, KX74-A, KX75-A, KX76-A, KX77-A, KX78-A, KX79-A, KX80-A, KX81-A, KX82-A, KX83-A, KX84-A, KX85-A, KX86-A, KX87-A, KX88-A, KX89-A, KX90-A, KX91-A, KX92-A, KX93-A, KX94-A, KX95-A, KX96-A, KX97-A, KX98-A, KX99-A, KX00-A, KX01-A, KX02-A, KX03-A, KX04-A, KX05-A, KX06-A, KX07-A, KX08-A, KX09-A, KX10-A, KX11-A, KX12-A, KX13-A, KX14-A, KX15-A, KX16-A, KX17-A, KX18-A, KX19-A, KX20-A, KX21-A, KX22-A, KX23-A, KX24-A, KX25-A, KX26-A, KX27-A, KX28-A, KX29-A, KX30-A, KX31-A, KX32-A, KX33-A, KX34-A, KX35-A, KX36-A, KX37-A, KX38-A, KX39-A, KX40-A, KX41-A, KX42-A, KX43-A, KX44-A, KX45-A, KX46-A, KX47-A, KX48-A, KX49-A, KX50-A, KX51-A, KX52-A, KX53-A, KX54-A, KX55-A, KX56-A, KX57-A, KX58-A, KX59-A, KX60-A, KX61-A, KX62-A, KX63-A, KX64-A, KX65-A, KX66-A, KX67-A, KX68-A, KX69-A, KX70-A, KX71-A, KX72-A, KX73-A, KX74-A, KX75-A, KX76-A, KX77-A, KX78-A, KX79-A, KX80-A, KX81-A, KX82-A, KX83-A, KX84-A, KX85-A, KX86-A, KX87-A, KX88-A, KX89-A, KX90-A, KX91-A, KX92-A, KX93-A, KX94-A, KX95-A, KX96-A, KX97-A, KX98-A, KX99-A, KX00-A, KX01-A, KX02-A, KX03-A, KX04-A, KX05-A, KX06-A, KX07-A, KX08-A, KX09-A, KX10-A, KX11-A, KX12-A, KX13-A, KX14-A, KX15-A, KX16-A, KX17-A, KX18-A, KX19-A, KX20-A, KX21-A, KX22-A, KX23-A, KX24-A, KX25-A, KX26-A, KX27-A, KX28-A, KX29-A, KX30-A, KX31-A, KX32-A, KX33-A, KX34-A, KX35-A, KX36-A, KX37-A, KX38-A, KX39-A, KX40-A, KX41-A, KX42-A, KX43-A, KX44-A, KX45-A, KX46-A, KX47-A, KX48-A, KX49-A, KX50-A, KX51-A, KX52-A, KX53-A, KX54-A, KX55-A, KX56-A, KX57-A, KX58-A, KX59-A, KX60-A, KX61-A, KX62-A, KX63-A, KX64-A, KX65-A, KX66-A, KX67-A, KX68-A, KX69-A, KX70-A, KX71-A, KX72-A, KX73-A, KX74-A, KX75-A, KX76-A, KX77-A, KX78-A, KX79-A, KX80-A, KX81-A, KX82-A, KX83-A, KX84-A, KX85-A, KX86-A, KX87-A, KX88-A, KX89-A, KX90-A, KX91-A, KX92-A, KX93-A, KX94-A, KX95-A, KX96-A, KX97-A, KX98-A, KX99-A, KX00-A, KX01-A, KX02-A, KX03-A, KX04-A, KX05-A, KX06-A, KX07-A, KX08-A, KX09-A, KX10-A, KX11-A, KX12-A, KX13-A, KX14-A, KX15-A, KX16-A, KX17-A, KX18-A, KX19-A, KX20-A, KX21-A, KX22-A, KX23-A, KX24-A, KX25-A, KX26-A, KX27-A, KX28-A, KX29-A, KX30-A, KX31-A, KX32-A, KX33-A, KX34-A, KX35-A, KX36-A, KX37-A, KX38-A, KX39-A, KX40-A, KX41-A, KX42-A, KX43-A, KX44-A, KX45-A, KX46-A, KX47-A, KX48-A, KX49-A, KX50-A, KX51-A, KX52-A, KX53-A, KX54-A, KX55-A, KX56-A, KX57-A, KX58-A, KX59-A, KX60-A, KX61-A, KX62-A, KX63-A, KX64-A, KX65-A, KX66-A, KX67-A, KX68-A, KX69-A, KX70-A, KX71-A, KX72-A, KX73-A, KX74-A, KX75-A, KX76-A, KX77-A, KX78-A, KX79-A, KX80-A, KX81-A, KX82-A, KX83-A, KX84-A, KX85-A, KX86-A, KX87-A, KX88-A, KX89-A, KX90-A, KX91-A, KX92-A, KX93-A, KX94-A, KX95-A, KX96-A, KX97-A, KX98-A, KX99-A, KX00-A, KX01-A, KX02-A, KX03-A, KX04-A, KX05-A, KX06-A, KX07-A, KX08-A, KX09-A, KX10-A, KX11-A, KX12-A, KX13-A, KX14-A, KX15-A, KX16-A, KX17-A, KX18-A, KX19-A, KX20-A, KX21-A, KX22-A, KX23-A, KX24-A, KX25-A, KX26-A, KX27-A, KX28-A, KX29-A, KX30-A, KX31-A, KX32-A, KX33-A, KX34-A, KX35-A, KX36-A, KX37-A, KX38-A, KX39-A, KX40-A, KX41-A, KX42-A, KX43-A, KX44-A, KX45-A, KX46-A, KX47-A, KX48-A, KX49-A, KX50-A, KX51-A, KX52-A, KX53-A, KX54-A, KX55-A, KX56-A, KX57-A, KX58-A, KX59-A, KX60-A, KX61-A, KX62-A, KX63-A, KX64-A, KX65-A, KX66-A, KX67-A, KX68-A, KX69-A, KX70-A, KX71-A, KX72-A, KX73-A, KX74-A, KX75-A, KX76-A, KX77-A, KX78-A, KX79-A, KX80-A, KX81-A, KX82-A, KX83-A, KX84-A, KX85-A, KX86-A, KX87-A, KX88-A, KX89-A, KX90-A, KX91-A, KX92-A, KX93-A, KX94-A, KX95-A, KX96-A, KX97-A, KX98-A, KX99-A, KX00-A, KX01-A, KX02-A, KX03-A, KX04-A, KX05-A, KX06-A, KX07-A, KX08-A, KX09-A, KX10-A, KX11-A, KX12-A, KX13-A, KX14-A, KX15-A, KX16-A, KX17-A, KX18-A, KX19-A, KX20-A, KX21-A, KX22-A, KX23-A, KX24-A, KX25-A, KX26-A, KX27-A, KX28-A, KX29-A, KX30-A, KX31-A, KX32-A, KX33-A, KX34-A, KX35-A, KX36-A, KX37-A, KX38-A, KX39-A, KX40-A, KX41-A, KX42-A, KX43-A, KX44-A, KX45-A, KX46-A, KX47-A, KX48-A, KX49-A, KX50-A, KX51-A, KX52-A, KX53-A, KX54-A, KX55-A, KX56-A, KX57-A, KX58-A, KX59-A, KX60-A, KX61-A, KX62-A, KX63-A, KX64-A, KX65-A, KX66-A, KX67-A, KX68-A, KX69-A, KX70-A, KX71-A, KX72-A, KX73-A, KX74-A, KX75-A, KX76-A, KX77-A, KX78-A, KX79-A, KX80-A, KX81-A, KX82-A, KX83-A, KX84-A, KX85-A, KX86-A, KX87-A, KX88-A, KX89-A, KX90-A, KX91-A, KX92-A, KX93-A, KX94-A, KX95-A, KX96-A, KX97-A, KX98-A, KX99-A, KX00-A, KX01-A, KX02-A, KX03-A, KX04-A, KX05-A, KX06-A, KX07-A, KX08-A, KX09-A, KX10-A, KX11-A, KX12-A, KX13-A, KX14-A, KX15-A, KX16-A, KX17-A, KX18-A, KX19-A, KX20-A, KX21-A, KX22-A, KX23-A, KX24-A, KX25-A, KX26-A, KX27-A, KX28-A, KX29-A, KX30-A, KX31-A, KX32-A, KX33-A, KX34-A, KX35-A, KX36-A, KX37-A, KX38-A, KX39-A, KX40-A, KX41-A, KX42-A, KX43-A, KX44-A, KX45-A, KX46-A, KX47-A, KX48-A, KX49-A, KX50-A, KX51-A, KX52-A, KX53-A, KX54-A, KX55-A, KX56-A, KX57-A, KX58-A, KX59-A, KX60-A, KX61-A, KX62-A, KX63-A, KX64-A, KX65-A, KX66-A, KX67-A, KX68-A, KX69-A, KX70-A, KX71-A, KX72-A, KX73-A, KX74-A, KX75-A, KX76-A, KX77-A, KX78-A, KX79-A, KX80-A, KX81-A, KX82-A, KX83-A, KX84-A, KX85-A, KX86-A, KX87-A, KX88-A, KX89-A, KX90-A, KX91-A, KX92-A, KX93-A, KX94-A, KX95-A, KX96-A, KX97-A, KX98-A, KX99-A, KX00-A, KX01-A, KX02-A, KX03-A, KX04-A, KX05-A, KX06-A, KX07-A, KX08-A, KX09-A, KX10-A, KX11-A, KX12-A, KX13-A, KX14-A, KX15-A, KX16-A, KX17-A, KX18-A, KX19-A, KX20-A, KX21-A, KX22-A, KX23-A, KX24-A, KX25-A, KX26-A, KX27-A, KX28-A, KX29-A, KX30-A, KX31-A, KX32-A, KX33-A, KX34-A, KX35-A, KX36-A, KX37-A, KX38-A, KX39-A, KX40-A, KX41-A, KX42-A, KX43-A, KX44-A, KX45-A, KX46-A, KX47-A, KX48-A, KX49-A, KX50-A, KX51-A, KX52-A, KX53-A, KX54-A, KX55-A, KX56-A, KX57-A, KX58-A, KX59-A, KX60-A, KX61-A, KX62-A, KX63-A, KX64-A, KX65-A, KX66-A, KX67-A, KX68-A, KX69-A, KX70-A, KX71-A, KX72-A, KX73-A, KX74-A, KX75-A, KX76-A, KX77-A, KX78-A, KX79-A, KX80-A, KX81-A, KX82-A, KX83-A, KX84-A, KX85-A, KX86-A, KX87-A, KX88-A, KX89-A, KX90-A, KX91-A, KX92-A, KX93-A, KX94-A, KX95-A, KX96-A, KX97-A, KX98-A, KX99-A, KX00-A, KX01-A, KX02-A, KX03-A, KX04-A, KX05-A, KX06-A, KX07-A, KX08-A, KX09-A, KX10-A, KX11-A, KX12-A, KX13-A, KX14-A, KX15-A, KX16-A, KX17-A, KX18-A, KX19-A, KX20-A, KX21-A, KX22-A, KX23-A, KX24-A, KX25-A, KX26-A, KX27-A, KX28-A, KX29-A, KX30-A, KX31-A, KX32-A, KX33-A, KX34-A, KX35-A, KX36-A, KX37-A, KX38-A, KX39-A, KX40-A, KX41-A, KX42-A, KX43-A, KX44-A, KX45-A, KX46-A, KX47-A, KX48-A, KX49-A, KX50-A, KX51-A, KX52-A, KX53-A, KX54-A, KX55-A, KX56-A, KX57-A, KX58-A, KX59-A, KX60-A, KX61-A, KX62-A, KX63-A, KX64-A, KX65-A, KX66-A, KX67-A, KX68-A, KX69-A, KX70-A, KX71-A, KX72-A, KX73-A, KX74-A, KX75-A, KX76-A, KX77-A, KX78-A, KX79-A, KX80-A, KX81-A, KX82-A, KX83-A, KX84-A, KX85-A, KX86-A, KX87-A, KX88-A, KX89-A, KX90-A, KX91-A, KX92-A, KX93-A, KX94-A, KX95-A, KX96-A, KX97-A, KX98-A, KX99-A, KX00-A, KX01-A, KX02-A, KX03-A, KX04-A, KX05-A, KX06-A, KX07-A, KX08-A, KX09-A, KX10-A, KX11-A, KX12-A, KX13-A, KX14-A, KX15-A, KX16-A, KX17-A, KX18-A, KX19-A, KX20-A, KX21-A, KX22-A, KX23-A, KX24-A, KX25-A, KX26-A, KX27-A, KX28-A, KX29-A, KX30-A, KX31-A, KX32-A, KX33-A, KX34-A, KX35-A, KX36-A, KX37-A, KX38-A, KX39-A, KX40-A, KX41-A, KX42-A, KX43-A, KX44-A, KX45-A, KX46-A, KX47-A, KX48-A, KX49-A, KX50-A, KX51-A, KX52-A, KX53-A, KX54-A, KX55-A, KX56-A, KX57-A, KX58-A, KX59-A, KX60-A, KX61-A, KX62-A, KX63-A, KX64-A, KX65-A, KX66-A, KX67-A, KX68-A, KX69-A, KX70-A, KX71-A, KX72-A, KX73-A, KX74-A, KX75-A, KX76-A, KX77-A, KX78-A, KX79-A, KX80-A, KX81-A, KX82-A, KX83-A, KX84-A, KX85-A, KX86-A, KX87-A, KX88-A, KX89-A, KX

Savings and Service You Can Count On



As a NAPA AutoCare Center, you are assured of certified warranty on all parts, labor and repairs.
See us for your automotive repairs.

Panora Oil Company has teamed with Hometown Foods to offer discounts at the gas pump!



Shop at Panora Hometown Foods, earn Reward Points for your qualifying purchases and use those points for GAS DISCOUNTS at Panora Oil! Our customers have saved over \$1,000 since January! Ask a cashier for information on how to get your Rewards Card.

and...

Sign up for our Kick Back program where you earn redeemable points with each and every purchase... plus a chance to win valuable prizes!



Tire Sales & Service
Auto Repair • 24 Hour Towing
Cold Pop & Beer • Sandwiches • Hot Coffee
Snack Foods
Groceries
Propane Tanks filled



**Car-Go Market
Panora Oil Co.**

418 E. Main • Panora • 755-2345
Open 5 am-10 pm Mon-Sat;
7 am-9 pm Sundays

SCHAFER ROOFING

We've Got You Covered!



FREE ESTIMATES

Residential & Commercial

**New Roofs - Re-Roofs - Repairs - Tear Off
Remodeling - Metal - Asphalt - Cedar**

**Visa & Mastercard Accepted!
Call - 1-800-996-7321**

Lake Side Floors



*When you want your house
to feel like a home*
**We have a nice selection
of quality flooring options
for you to choose from.**

We offer professional installation.
We do not subcontract our work out therefore
we can assure you that the job is done right.

We guarantee all of our work.

FREE QUOTES!

**Call Us Today at 641-755-3400
or stop in and see us at
101 E. Main Street in Panora**

HOURS:
Monday, Tuesday & Thursday 9 a.m.-5 p.m.
Wednesday 1 p.m.-6:00 p.m.
Friday 10 a.m.-4 p.m.
Saturday 9 a.m.-Noon

Evenings By Appointment Only!

Quality, Honesty & Integrity We Build Homes For Life!



- New Construction • Remodels
- Complete Plan Service

**36 Years Of Experience Working
At Lake Panorama**

**Call Now For Your Spring and
Summer Construction Projects!**

**Rick Hayes
Construction**



*For ideas & inspiration, contact Rick at 641-757-0137 (cell)
or email at hayescon@netins.net*



Celebrate Your Independence

Break free from lines, checks and stamps!
Join the mobile movement delivering independence to your banking experience.
FSB Yale offers mobile banking, mobile deposit, e-alerts and paperless banking.



Farmers State Bank

FDIC



Growing Trust. Building Community.



201 Main Street | Yale, IA 50277 | 641-439-2221 | 877-439-2221
yalebankiowa@yalebankiowa.com | www.yalebankiowa.com

We Will Match Or Beat Anyone's Price Guaranteed!

Laughlin

We Are Your Complete Professional Lawn Care Service Locally Owned & Operated

- Mowing • Seeding
- Lawn Maintenance • Lawn Aeration
- Landscape Mulching • Leaf Pickup
- Tree & Snow Removal

Call Us Today! 712-250-0089
Fully Insured

Your Lake Living Resource

National Brand...Local Service

Des Moines MLS exposure for all buyers and sellers! Call me today



6824 Lakeway Drive, Lake Panorama

Wooded, waterfront lot on west side near Par 3 golf course and Shady Beach. Concrete riprap and sidewalk path to water. Perfect for walk out. Build your dream home now! \$99,900



4515 Lakeway Drive, Lake Panorama

Double, corner offshore building lot with lake access via adjacent LPA community lot. Fantastic lake views! Great value. \$27,500



6058 Panorama Road, Lake Panorama

Wooded, waterfront lot on the narrows. Private beach, professionally riprapped. Close to Par 3 golf course. \$40,000



5172 Panorama Drive, Lake Panorama

Fantastic lot near #4 on Lake Panorama National Golf Course. Gentle slope, some lake views. Great location. Ready for you to build on today! \$21,000



4657 Panorama Drive, Lake Panorama

Awesome lot on east side of Birchfield Cove ready for your building plans. Excellent perc results. Gentle slope to water, 74' of shoreline, beach, dock, & shade trees. \$199,500



6758 Panorama Dr., Lake Panorama

Beautiful views of Horseshoe Cove. gently sloping lot includes electricity and water to storage shed, electricity to the dock area, rip rapped shoreline and large beach. Come relax and enjoy. \$219,900.



4693 Panorama Dr., Lake Panorama

Great lot on the east side of Birchfield Cove near the mouth of cove. Perfect for walk-out home with gently sloping terrain. Storage shed included. Just minutes from Des Moines suburbs. \$289,000.



8157 Outer Drive, Dexter

Completely remodeled cabin, inside and out. Fireplace, granite, finished basement, screened porch, fire pit. Located offshore at Diamondhead Lake. This is a must see! \$99,900.



311 E Market Street, Lake Panorama

Spacious 4 bedroom home with 2 baths. Main level master, updated. Beautiful landscaping on large lot. Close to all amenities, and walking distance to school. \$119,000



6816 Panorama Drive, Lake Panorama

Enjoy the cove life with easy, quick access to the main channel. This beautiful lot on the west side of Lake Panorama has 104' of shoreline and is ready for your enjoyment! \$150,000



Cindy Johnson

(515) 491-4127

cindy.johnson@cbdsm.com

www.cindyjohnsonhomes.com

"Cindy found us the perfect home at Lake Panorama at the right price. She has good judgment when it comes to helping you find what works best for you. Cindy negotiated the right deal for us and we got exactly what we were hoping for in the end. She is professional, knowledgeable, and always reachable. We recommend her enthusiastically."

Jason & Ashley

My family has enjoyed Lake Panorama and all it has to offer for 25 years. With so many things to do - boating, skiing, swimming, fishing, golfing, or ski team - let me help you find your dream home today! If you are considering putting your house on the market, I will be happy to provide you a free comparable market analysis utilizing the latest innovative tools and resources available. Please call today!

Sincerely, Cindy

COLDWELL BANKER
MID-AMERICA GROUP,
REALTORS®



LAURA KEMBLE
Realtor™

CHECK OUT OUR WEBSITE!
www.lakepanoramarealty.com

LAKE PANORAMA REALTY



DAVE WAGLER
Broker



Guthrie County State Bank Bldg. 505 E. Main, Panora, IA (641)755-3276

Licensed to Sell Real Estate in Iowa • e-mail: info@lakepanoramarealty.com



Golf Course Condo located on Hole #5 of Lake Panorama National Golf Course and near Clover Ridge Resort. 2 BRs, 2 BA – all one level. Open Gr Room includes Liv Rm with fireplace, kitchen with breakfast bar and dining area. Outstanding golf course views from rear deck. Attach 2 car garage. **\$199,900**



WATERFRONT HOME – Located on West Lake Panorama, this open concept walk-out ranch style home with expansive views of Lake Panorama is complete with a cantilever dock and 167 ft of shoreline. 2BR, 2 BA and lower level fam room. **\$309,000**



WATERFRONT CONDO prime location at Boulder Cove! 2 BR, 2 BA. Move in ready with gleaming wood floors, granite countertops, fireplace with built-ins and many upgrades. Easy access to boat slip. **\$270,000**



WATERFRONT HOME – Premier LAKEFRONT LIVING with breathtaking Main Basin water views of Lake Panorama. 5 BR, 5 BA. Elegant home with open living features gleaming hardwood floors, fireplace, and custom built-ins. ML Mstr Br Suite. Renovated boat house with kitchen, party room, wrap around deck. **Don't miss this Dream Home close to Marina and other amenities. \$750,000**



Prime Waterfront Location Located in the hub of everything Lake Panorama, this 4BR 4BA home has it all! Vaulted LR with gas FP, dining area, eat in kitchen and 4 season room plus huge master suite all with amazing water views. Many more great features and flat lot make this an extraordinary home. **\$649,900**



Newly Renovated Waterfront Home. Located on a quiet cul-de-sac with incredible lake views, this 3BR 2BA is set on two lots with over 200ft of shoreline. The interior of this home was totally renovated in 2014 with high end finishes like hardwood, plush carpet and granite. This is a must see! **\$440,000**



WATERFRONT HOME in protected cove close to Main Basin of Lake Panorama. 3 BR, 2 BA ranch home with screen porch. Level yard with mature trees and private sand beach. Landscaped yard and deck. Total renovation 2014. **\$489,000**



Inviting and Relaxing Waterfront Log Home. This 4BR 3BA beautifully designed home provides the ultimate in lake living. With plenty of space for entertaining and guests, this home also boasts an amazing outdoor area with a private beach and mature trees for privacy. **\$469,000**



Custom Built Chalet Style Home. With 3DR and 2BA, this inviting off shore home is tucked into a very private wooded setting at Lake Panorama. Open concept floor plan with soaring vaulted ceilings, wood/gas fireplace, ML master bedroom and guest room and much more! **\$225,000**



Conveniently Located Waterfront Home. This 2BR 2BA home is an open concept floor plan with vaulted ceilings in the kitchen and living room. Plenty of windows to the lakeside provides natural light and lake views. Just steps to the water in a quiet cove. **\$320,000**



Waterfront Home with Outstanding Views This meticulously maintained 4BR 4BA home boasts over 270 Ft of shoreline. An amazing 4 season room and open concept kitchen/living room plus another family room on the LL are just a few of the features of this beautiful home. **\$685,000**



New Price 4BD, 3BA Make Family Memories in Gorgeous Lake Home with Boat House! This rare property is a “must see” to fully appreciate! Located on a double wooded lot in one of the prettiest coves on Lake Panorama's east side, this spacious home offers ideal lakeside living with room for everyone! **\$499,000**



Panoramic Waterfront Views The main channel of Lake Panorama is the setting for this grand home. Approx 2 acres m/l of premium lake real estate. Featuring 3 levels, 5BR 4.5BA, huge kitchen and formal dining area. LR areas with fireplaces and great views on 2 levels. **\$529,000**



Premier Waterfront Home Turnkey opportunity with this outstanding 5BR, 5BA home overlooking the main channel of Lake Panorama. This multi-level, tastefully stylish home is set up for entertaining and lake living. Be ready to enjoy summer 2015 soon, when you choose this amazing property! **\$682,000**



Waterfront Oasis This spacious 4BR 4BA walkout is perfectly positioned on this coveted level lot at Lake Panorama. This home was completely renovated in 2002 and the results are nothing short of amazing. Plenty of room for lake entertaining both inside and out. **\$675,000**



Exceptionally Level Walk Out Waterfront Home. With 3BR (plus 1 non-conforming BR) and 3BA, this home has a spacious great room, kitchen with separate dining area. Expansive views of the lake along with covered deck, sand beach and much more. **\$509,000**



Waterfront Home Overlooking Helen's Cove This stunning sun filled 4BR 3BA walkout ranch has multiple entertaining areas including an open concept LR/DR, spacious upper deck and huge LL family room. Easy, quick access to golf, beach, marina and dining make this a must see home! **\$456,000**



Waterfront Cedar Retreat This story and a half, 3BR 3BA home is the perfect mix of cabin charm and classic luxury. Panoramic views of the lake from the deck and hot tub are as special as the LL family area complete with pool table, bar and movie area. Detached garage with extra sleeping space. **\$499,000**



Outstanding Waterfront home. Enjoy your own private beach at this impeccably maintained lake home. 4BR 4BA with an eat in kitchen and tons of storage. Just minutes to golf, dining, the marina and downtown, this home is in a prime location! **\$529,900**



Private Location Off Shore Located on 2 lots with mature trees, close to Sunset Beach at beautiful Lake Panorama. This 3BR 2BA ranch style home features a two sided wood burning fireplace. Approx. 1700 SQFT on one level M/L. **\$149,000**



Waterfront Weekend Retreat Quick access to Hwy 44, this 2BR, 1 non-conforming BR, 2BA cabin has the rugged charm the west side of Lake Panorama is known for. Tucked into a wooded, quiet area, a great place to get away from it all, enjoy the lake and relax! **\$295,000**



Impressive Waterfront Home This 4BR, 2BA walkout features a high end gourmet kitchen, huge walk in pantry as well as a traditional dining/living room. The lower level has a 2nd kitchen, family room and plenty of storage. An attached 4 car garage and spacious yard add to the appeal of this home **\$525,000**



Private Backyard Sanctuary This 3BR (possible 4), 3BA roomy ranch style home is located on 2 off shore lots. Open concept kitchen/great room and sunroom and deck that overlook the beautiful backyard area. ML master suite, laundry, kitchen pantry, storage thru out and attached 3 car garage! **\$247,000**



Off Shore Weekend Retreat Located on two wooded private lots, this 2BR 2BA ranch style home is the perfect home for a get away weekend. One level living with vaulted ceiling in LR and a deck facing toward the lake. Nice fire pit area tucked into many mature trees adds to the nature feel of this home. **\$125,000**



Beautifully remodeled GOLF COURSE HOME on 2 lots! Bordering #9 LP National Golf Course - close proximity to Boulder Beach. 4 BR – 4 BA. Granite countertops and oak hardwood flooring in kitchen/dining area. Mstr Br with three/4tr BA. Spacious LL Fam Rm with wet bar. **\$237,500**



Fantastic Lake Retreat located on 2 lake lots with approx two-thirds acre of land. Stunning wooded setting with peek a boo water view from large main level deck. 3 BR, 2 BA. Liv Rm with wood fireplace and slider to ML deck. Remodeled kitchen. **\$140,000**



Outstanding Waterfront Chalet Style This stately 4BR, 5BA cedar home is breathtaking inside and out. An open concept great room with 26' ceilings & 3 tiers of windows lakeside, along with high end finishes and expert craftsmanship are just a few details that make this the complete lake home package. **\$625,000**



5439 Chimra Rd.



Mint Condition Off-Shore This 4BR 3BA ranch style home features soaring vaulted ceilings in LR and kitchen with charming arched windows and fireplace in the LR. Lower level has 9ft ceilings, spacious family room and plenty of storage throughout. Delightful outdoor fire pit area & more! **\$280,000**



4717 Johnson Pt.



5249 Tie Rd.



5018 Karen Drive

LAKE PANORAMA SALES LEADER

SUMMER ON THE LAKE



ASHLEY SCHABER | LAKE TIMES



\$699,900

4275 Panorama Dr.

This 1 1/2 story castle has all the amenities you expect from a custom built home. This house has enough room for all the kids and grandchildren in comfort that entices them to come out to the lake. 122 feet of frontage with your own private beach. Call for a private showing.



\$167,500

1405 Hwy 25, Bayard

1.27 acres 9 miles north of Guthrie Center. Completely renovated main floor. The eat in kitchen has beautiful wood floors and cabinets. Spacious master has a walk in closet and bath. Mature trees give plenty of shade.



\$365,000

4830 Lean To Point

Beautiful 3 bedroom 3 bath home overlooking Helen's Cove. Gorgeous 4-season room with a fireplace. Gourmet kitchen with pantry. Hardwood floors throughout the main level. Master bedroom features a walk-in closet, fireplace and full master bath.

Free Movie Night Returns!

Join me August 1st on the main beach as we bring back this fan favorite. A movie and popcorn will be provided. The movie, Big Hero 6, is family friendly. Bring the whole family out for a great night on the beach.



John McDermott, Licensed in Iowa
641-431-0042 • www.lakepanoramahomesforsale.com
Brokerage Office 702 1st Avenue, Perry

Career Opportunities

Two Loan Officer Positions Available

Guthrie County State Bank is looking for **two new team members** for the position of Loan Officer. We are hiring one Loan Officer in each of our two locations – Guthrie Center and Panora, Iowa. We are seeking applicants who are **self-starters**, who **thrive on building customer and colleague relationships** and who **would enjoy living and working in a small community** with access to the amenities of an urban area.

We are an **independently and locally owned, highly secure** organization with \$118 million in assets and have served Guthrie County and the surrounding area since 1931. Our Panora location was built and opened in 1998 and we are currently building a new state-of-the-art location in Guthrie Center, which will be completed in early 2016. We offer a **wide range of services and products** with offerings comparable to those of larger financial institutions. Our employees are **active community citizens**, representing themselves and the Bank in a positive way to serve and improve the quality of life for our neighbors.

The **Loan Officers** will work with customers to apply for consumer loans and mortgage loans as well as open and maintain new deposit accounts. These two positions will report to the chief loan officer. These positions will have **frequent customer interaction**, will **conduct credit analysis** and **prepare all documentation** for loans and new accounts as directed by the

policies of the organization and oversight entities. Persons in these positions will call on existing and prospective customers; ensure customer credit integrity and monitor accounts for stability.

The Loan Officers will **excel at written and verbal communication**, provide **courteous and personal attention to customers** and prospects, **work cooperatively** in a team setting and be able to **maintain files and records** that meet or exceed all required compliance standards. All employees of Guthrie County State Bank are expected to perform with the **highest level of professionalism and ethical standards**.

Guthrie County State Bank offers a **competitive benefits package** including life, short- and long-term disability, health, vision and dental insurance as well as a profit sharing 401K retirement plan and paid time off. The salary for this position is commensurate with the applicant's experience. **For more information, visit gcsbank.com.**

To qualify for this position, a bachelor's degree in business, finance or a related field is desirable, but not required. Applicants should have more than three years of progressive experience in banking or bank operations, and we will also consider experience in related fields such as finance, credit and/or financial analysis, sales and marketing. Please email a resume and cover letter to:

Mike Underwood,
President & CEO, Guthrie County State Bank
at munderwood@gcsbank.com

Guthrie Center

P.O. Box 8 • 400 State Street
Guthrie Center, IA 50115
PH: 641.332.2218 • **TF:** 866.747.2218
FX: 641.332.2693 • **EM:** gcsb@gcsbank.com

Panora

P.O. Box 757 • 505 East Main Street
Panora, IA 50216
PH: 641.755.2400 • **TF:** 877.755.2400
FX: 641.755.2344 • **EM:** gcsb@gcsbank.com


GCSBank.com



**GUTHRIE COUNTY
STATE BANK**
Connecting Communities




Guthrie County State Bank provides equal employment opportunities (EEO) to all employees and applicants for employment without regard to race, color, religion, sex, national origin, age, disability or genetics. In addition to federal law requirements, Guthrie County State Bank complies with applicable state and local laws governing nondiscrimination in employment in every location in which the company has facilities.



**LET US HELP
PLAN YOUR TIME
ON THE WATER**

**BLOWOUT
SALE**

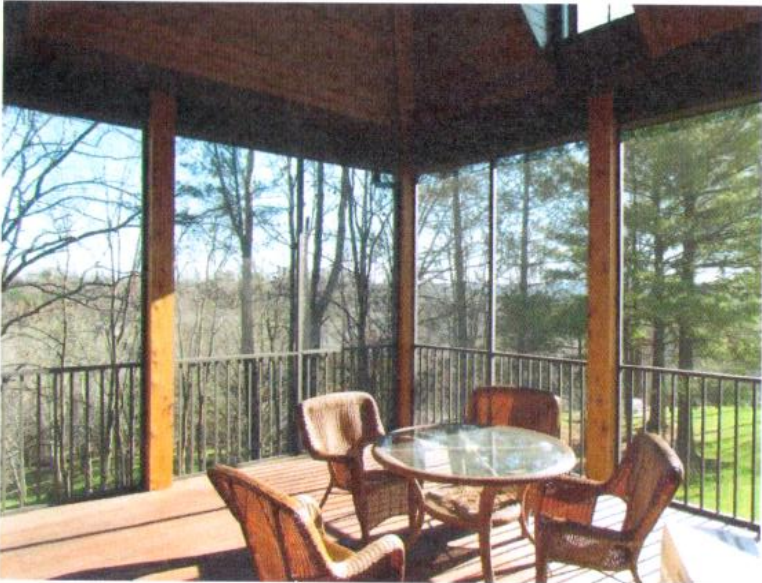
**ON ALL REMAINING
2015 BOATS IN STOCK**



HWY. 14 & 163 · MONROE, IOWA 50170
641-259-2628 · 888-MALONES
WWW.MALONEMOTORSports.NET

Change your outlook on outdoor living.

We offer many options with the Westbury railing and screen-rail system.



- Stop in to view the products in our show room
- Let us help you plan your space

Enjoy More Outdoor Living





Lake Lumber Co.
A Division of Neel Lumber Co. Since 1927

Your Complete Building Materials Supplier

405 E. Clay St. • Panora, IA • 641-755-2385
Hours: Mon-Friday 7:30am - 5:00 pm ; Saturday 8:00am - 3:00pm



LPNNEWS

HALF-PRICE 2015 LPN GOLF MEMBERSHIPS NOW AVAILABLE

It's the middle of July, which means the 2015 golfing season is half over....sad, but true. There is some good news, though, for those who haven't purchased a 2015 LPN golf membership — buy an annual golf membership now and pay just half price. This deal is available for all membership categories — regular for both LPA and non-LPA members; distance for those who live more than 18 miles from the course; and special for those who were not LPN members in 2014. The 2015 membership application forms show the full rates, which would be cut in half for this half-season special. Call the LPN pro shop at 641-755-2024 for more details.

HOUSING FOR IOWA OPEN GOLFERS NEEDED

The 2015 Brokers International Iowa Open is August 14-16. One of the many things that makes this tournament special for golfers who travel to Lake Panorama is free housing offered in host homes. Again this year, Kent and Shirley Stephenson are coordinating housing requests from players. While many players already have been placed, requests continue to come in. If you have space available, and would consider hosting one or more players, please contact the Stephensons at 641-755-3787.

THE LINKS DINNER SPECIALS THURSDAY-SATURDAY

Peter Makens, the new executive chef in The Links kitchen, is offering dinner specials each Thursday, Friday and Saturday, beginning at 5 p.m.. This is an opportunity for diners to try some new dishes, and for Makens to gain feedback on what might work well on the new menu he's planning. This week's appetizer is bacon-wrapped shrimp with a sweet and sour barbecue sauce. The Cobb salad returns for a second week, and offers a seasoned chicken breast on mixed greens, housemade ranch dressing, blue cheese, bacon, tomato

and avocado. The sandwich special is a marinated chicken breast with chipotle mayo, pepper jack cheese and avocado. This week's entree is Steak de Burgo medallions — herb-encrusted beef tenderloin served with potato gratin and garlic butter sauce. To finish things off, try the rustic apple tart with vanilla bean gelato and homemade caramel. Plan now for dinner at The Links, and let Chef Makens know what you think about these special offerings.

MURDER MYSTERY COUPLES EVENT JULY 24

The July 24 Friday night couples is a murder mystery. This theme night was rescheduled after a rain out in May, and the killer's trail is growing cold. So get signed up and help solve this mystery! Sign up as a couple to play with another couple, or the pro shop can play matchmaker. Gather at Spikes around 5 p.m. for a 5:30 p.m. start. Cost is \$10 per couple.

LPN CLUB CHAMPIONSHIP JULY 25-26

The 44th LPN Club Championship is July 25-26, with an 18-hole round both days. There is one women's division, with play from the red tees. There are three categories for men. The open division is for players 16 years of age and up, and played from the blue tees. A senior division is for men 50 and older, with play from the white tees. A super senior men's division is for those 70 and older, with play from the red tees. Prizes will be awarded in both gross and net divisions, with flights based on the number of entries. Entry fees of \$25 are due by July 22. The Junior Club

Championship July 25 is a 9-hole event, open to all LPN junior members, and recommended for ages 7 through 15. Play will be from the red tees and begin at 5:30 p.m. Parents are asked to help caddie and score for their junior players. Entry fee is \$10. Call the pro shop at 641-755-2024 to get entered.

RALLY FOR A CURE FUNDRAISER JULY 23

The LPN women's league is sponsoring its annual Rally for a Cure fundraiser July 23. This event is open to all LPA women golfers, and cost is \$20. Garden stakes in the shape of pink ribbons are being sold for \$5 each. Buyers can write tributes to loved ones on the ribbons, which will be on display in LPN flowerbeds. The event also will include a silent auction, the "Bling out a Bra" competition, and a 5:30 p.m. shotgun. Donated items for the auction are welcome. More details online.

MIXED COUPLE TOURNAMENT AUGUST 1-2

A few slots remain for the annual LPN Mixed Couple tournament August 1-2. Couples play as partners, with men from the white tees and women from the red tees. Both partners drive and each plays a second shot with the other's ball. After the second shot, choose the best ball and alternate shots from there. Cost is \$150 for LPN members and \$230 for non-members, which covers golf, Saturday dinner and prizes. Registration is noon Saturday, with a shotgun start at 1 p.m. that day, and 9 a.m. on Sunday. Entry form available here or call the pro shop at 641-755-2024.

KAUTZKY TREE CARE LLC

Call Paul at 712-249-9725

- FREE ESTIMATES • TREE TRIMMING & REMOVAL
- STORM CLEAN UP • TREE PLANTING

ASH TREE TREATMENT

- Retaining Walls • Patios • Water Features • Planting

LICENSED • INSURED • EXPERIENCED • LOCAL REFERENCES

Serving Lake Panorama and surrounding area for over 29 years!



- Complete floating dock, lift and canopy starting at just \$12,000! Installed!!
- Entire dock system is floating, always stays level and fluctuates with water level.
- No need to pay barge fees to remove and re-install, if in protected coves.
- Constructed entirely of maintenance-free materials. Treated wood frame is also available.
- Full line of dock accessories: benches, ladders, cleats, bumpers, dock boxes, etc.
- Econo Lift Boat Hoists in marina starting at only \$4275! Installed!!
- Floating PWC lifts starting at just \$2050! Installed!

At L&N Dock and Lifts, customer service is and always has been our top priority for 29 years!



62799 577th Street • Lewis, Iowa 51544
(712) 769-2550 • (800) 546-6985
www.LNDocks.com

"Stay Afloat"



BOAT HOIST

ADAMS

SHORELINES / DRIVEWAYS

LPA MEMBER FOR 18 YEARS SERVING LPA RESIDENTS

RETAINING WALLS

- Cast blocks, all sizes
- Natural Limestone blocks
- Boulders

EROSION CONTROL

- Silt ponds & waterways
- Lot clearing
- Black Dirt
- Grading & Seeding

SHORELINES

- New construction and repair of rip rap walls
- Flagstone patios & steps
- Lake access road

MOWING & TRIMMING

- LAWN VACUUMING
- STORM CLEANUP

ALL PROJECTS ENGINEERED

Dave Adams, owner

FREE ESTIMATES **641-757-9133** FULLY INSURED

Welcoming new patients!

The providers at Mercy Panora Medical Clinic are welcoming new patients!


Hours of operation:
Monday–Friday, 8:30 a.m. to 5 p.m.
319 E. Main St., Panora
(641) 755-2121

Providers:
Eric Ash, M.D.
Tonia Erickson, ARNP
Amy Harland, PA-C

DOT physicals are offered by certified providers.




Mercy Clinics
PANORA MEDICAL CLINIC



Contact us for.....

- Patios and Steps
- Shoreline Repair, Boulder Walls and Beaches
- Cantilever Docks and Repair
- Trucking for Rock, Gravel, Sand and Dirt
- Tree Trimming and Removal
- Lot Clearing and Clean Up
- Finish Grading and Dirt Work
- Seeding and Sod
- Erosion Control
- Drain Tile



Call Tom Rutledge, owner
641-757-1510 Guthrie Center
Fully Insured • References

PUBLIC NOTICE

Lake Panorama Association
Board of Directors Meeting
May 26, 2015
Lake Panorama
Association Office

The Lake Panorama Association Board of Directors met May 26, 2015, at 5:00 PM, at the Lake Panorama Association Office. Board members present were Bob Batschelet, John Coghlan, Tom Jeschke, Mindy Larsen Poldberg, Charles Schnack, and Neil Wright.

Staff present were John Dinnebier, Danna Krambeer, John Rutledge and David Thompson.

Visitors present were Everett Grasty, Guthrie County Supervisor, Gary Evans, LPA Member, and Chris Wadle, St Thomas More Center.

President Coghlan called the meeting to order at 5:00 PM.

Agenda Item 1 – Approval of the Agenda. Following items were requested to be pulled from Consent Agenda:

- 4a - General Manager's Report (for discussion on LP West Windows)
- 4c – LPA Board meeting dates for June, July and August
- 4e – Acceptance of April 2015 Financial Report for discussion on LPN April activities

Wright moved to approve the agenda with the noted changes to the consent agenda. Motion second, carried unanimously.

Agenda Item 2 – Election of Officers. Jeschke moved to elect the slate of officers as presented. Motion second, carried unanimously.

President John Coghlan
Vice President Neil Wright
Secretary ... Mindy Larsen Poldberg
Treasurer Bob Batschelet

President Coghlan thanked everyone for their continued service and emphasized the importance of the Board to document the information regarding short term and long term plans and goals, so future boards can work with the information provided, and not have to spend time researching items previously discussed.

Agenda Item 3 – Open Forum. No one spoke in open forum.

President Coghlan thanked Everett Grasty for his support of the recent RIZ legislation.

Agenda Item 4 – Consent Agenda. Items discussed from the consent agenda.

4a – Manager's Report –Batschelet asked about the plan for replacing the LP West windows which are beginning to fall apart. Rutledge reported Pella did give a discounted price on the windows that were replaced a few years ago. Jeschke would like to see prices from other window manufacturers, example Marvin, Anderson, Eagle. Rutledge reported bids are being gathered now and will report on the information as obtained. The project will be a 2016 capital expenditure. Timing of completion will be decided after the bids are obtained.

4c – LPA Board meeting dates for June, July, and August of 2015. Meeting dates were agreed upon to be June 30, July 28, and August 25 meeting dates.

4e – Acceptance of April 2015 financial report. Coghlan asked Dave Thompson to report on the LPN Financials and specifically on event revenues and costs. Dave reported on several events and how the costing information is gathered. Dinnebier reported that Peter Makens, the newly hired chef, will be evaluating all pricing of menu items as well as event pricing. Coghlan requested a report be prepared for the September Board meeting to update the Board on pricing and margins, etc.

Wright moved to approve the consent agenda as discussed. Motion second, carried unanimously. Consent agenda to include: LPA General Manager's Report; Approval of minutes from 04/28/2015 LPA Board Meeting; LPA Board meeting dates for June, July, and August of 2015; Accept offer on Parcel A NW SW – 6301 Panorama Drive; Acceptance of 04/30/2015 financial report, LPA & subsidiary LPN.

Agenda Item 5 – Report on Financial Performance of LPN, LLC. John Dinnebier reported LPN, LLC is off to an average start to the year. Recorded rounds of

golf played through April are ahead of last year. Lodging numbers also ahead of last year. Memberships to date for 2015 are at 242 memberships, which are down from the total in 2014 of 257. An additional unit has been added to the townhome rental for lodging. LP West course is in good shape. The pool is open and response is great.

Pete Makens will start June 8. We are very excited to get him started. Joyce Moore is retiring June 16, Sarah Meinecke will take over Joyce's position and also work in the Pro Shop and help with event planning. Carpet project will be completed June. Driving range work has been delayed with weather. Bookings are strong for the rest of the year.

Jeschke asked if LPN members could play for free at Panorama West when the LPN course is closed for outings. Dinnebier will look at a reciprocal agreement for play at Panorama West.

A retirement open house for Joyce and for the Harris's will be scheduled.

Poldberg asked if LPN General Manager report could be added to the consent agenda, as the LPA General Manager report is. Several members spoke in favor of this.

Poldberg moved to have the LPN general manager report be added to the consent agenda. Motion second, motion passed.

Agenda Item 6a – Committee Appointments. Board discussed the LPA General Manager's recommendation for committee appointments and Board members for each committee. Additional discussion was held on setting a revolving term for the Appeals Committee, previously set as annual terms, with no limits, term limits were added to the Appeals Committee.

Batschelet moved to approve the 2015-16 LPA Building Codes Committee, Water Safety Committee, Land Sales Committee, and Appeals Committee appointments per the General Manager's recommendation. Motion second, carried unanimously.

Building Committee ... Term Expires

Chris Wadle2018
Gary Evans.....2018
Bob Akre2017
Dirk Westercamp2017
Larry Northup2017

Greg Cushing2016
Jim Tometich2016
John Coghlan...LPA Board Member
Tom Jeschke...LPA Board Member

Water Safety Committee..... Term Expires

DJ Van Wyk2018
Darrell Hartle.....2017
Jim Koch2017
Chris Welp2017
Dale Behrends2016
Todd Hyde.....2016
Marina Tenant – Lyn Coulter..... Continuous

Neil WrightLPA Board Member
Charles SchnackLPA Board Member

Land Sales CommitteeTerm Expires

Kathleen DeLucca2017
Keith Peterson.....2017
Maureen Lubeck.....2016
Larry Hills.....2016
Marina Tenant – Lyn Coulter..... Continuous

Bob Batschelet LPA Board Member
Charles SchnackLPA Board Member

Appeals Committee... Term Expires

Jim Spradling2018
Ron Morden.....2018
Jan Hardy2017
Dave Thomas2017
Linda Reis.....2016

Agenda Item 6b – St. Thomas More Lease. To extend lease to St. Thomas More for trail areas on community property and LPA property in the vicinity of St. Thomas More Center. The lease was initiated the 1st of June in 2005, but technically expired on May 15. Terms for the lease included the following: 1. Annual payment in advance of \$1,000 due on May 15. 2. Use limited to hiking and horseback riding and other camp activities with the exception of motorized vehicles. 3. The lease does not allow grazing, timber harvest or activities that harm the environment. 4. LPA members allowed to use the trails at their own risk, although this has not really materialized. The LPA did not promote the use of the hiking trail area. Boundary marking asked for in the lease was not completed. This would have been costly and difficult to do due to the diverse and varied boundary lines which, since there is only a handful of homes nearby, has not caused any issues.

The LPA reserved rights to place dredge pipe over the area, if necessary, and did not allow subletting of the property. The usual legalese for indemnity and lease

default was included. There was a five-year renewal option, but the change in management of the Center in the past two years left that option unpursued until this time, past the lease expiration.

No known complaints have been received for this particular usage of the LPA property. Staff has not noted any serious erosion or resource damage concerns in the visits to the area in 2013 and 2014.

Jeschke moved to extend the lease for a term of five years at the same terms as the previous lease with adjustments in wording to clarify any issues that may now be of importance per the LPA attorney. Motion second, carried unanimously.

Agenda Item 7a – Septic easement policy. Moved to close session.

Agenda Item 7b – Marty Derry Variance Request – Lodge Cove. Review request by Marty Derry, owner of lots 0775BWF and 0776BWF, to modify shoreline.

Marty Derry has requested permission to modify the shoreline and install a boat slip using sheet piling. Shoreline rights were initially questioned, but review with Joel Williams (attorney) and W.C. Hillhouse (surveyor) confirmed both properties have shoreline rights.

Proposal

1. Designate a boundary that would include all area needed to install sheet piling slip, yet leave LPA shoreline (20-30') for access from water. (Precise boundary is negotiable)
Costs to be attributed to owner.

2. Require complete rip-rap of 775, 776 using approved slope, rip rap material, and fabric backing.

3. Allow permeable rock/concrete/fabric silt control dams to be put on LPA property upslope from 775 and 776, with consideration to prohibit backing water on neighbor property without permission. Allow second silt control permeable rock/concrete/fabric structure installed on LPA property or by acquired easement on neighbor private property. Grading and construction should provide future access for silt removal behind silt structures. Plans for structures shall be approved by LPA and must not be of such type to cause need for Iowa DNR approval.

4. Manage drainage channel downslope from silt dam(s) to allow proper drainage into Lodge Cove and protect slip area.

5. Allow 40' x 20' (approx.) boat slip construction outlined by capped sheet piling in area in front of lot 775 in area designated in item 1, faced with riprap to maintain appearance of slip as being shoreline.

6. As part of agreement to allow the above, the LPA makes no guarantees of dredging or of navigational access to the site, and agreement makes it clear the maintenance of the project is up to the owner.

Agenda Item 8a Water System Report – Rutledge passed out information for Water System Capital Improvement Plan. The information distributed is for background for future discussions on the water, and submitted to the Board for review.

Agenda Item 8b – LPA and LPN Mission Statement development – To develop mission statements for LPA and LPN, LLC. The BOD requested draft mission statements for initial review at the May meeting. Discussion was held on the mission statements.

Coghlan opened up for discussion on the proposed mission statement.

Lake Panorama Association (LPA) Mission Statement -
LPA exists to serve and protect the property of the owners within the Lake Panorama subdivision by providing services, policies, and engaging in activities that preserve and grow property values that enhance the long-term viability of a private, residential development surrounding Lake Panorama.

LPN, LLC (Lake Panorama National Golf Course and Conference Center) – LPN, LLC is a wholly-owned subsidiary of LPA, whose purpose is to provide the LPA members and guests with a resort golf experience, restaurant dining options, banquet and meeting room services, lodging options and other related services and goods, while being a self-sustaining and self-contained business entity.

Jeschke moved to adopt the mission statement as written. Motion second, carried unanimously.

Rutledge asked for a facility plan for future planning. A budgeting system needs to be based on the existing policies and mission statements. We need to put in writing into the records that the LPA and LPN will exist as separate entities and not share the same building. LPA can move forward with their plans and LPN can move forward with making plans for their future operations. A discussion was held with agreement to further review the concept of developing a subordinate board to oversee LPN, LLC. Joel Williams, LPA attorney, will bring recommendation to the next meeting.

Coghlan asked for a Land sales report for the next meeting.

Agenda Item 9 – The Board entered closed session at 7:30 PM to discuss legal matters.
The Board exited closed session at 8:10 PM.

Batschelet moved to approve the resolution of signing the pool lease. Motion second, motion carried.

Agenda Item 7a - Septic easement policy – Rutledge was instructed to inform Lint we cannot convey easement on community area.

Meeting adjourned at 8:15 PM.

Danna Krambeer,
Recording Secretary

Mindy Larsen Poldberg,
Board Secretary

B&A PRESSURE WASHING & PAINTING

- Interior
- Painting
- Exterior
- Staining
- Sealing

Houses and Decks
27 Years Experience
References Available
All Work Is Fully Guaranteed
Call 515-833-2936



DON'T LET DIRTY WINDOWS SPOIL YOUR PRICELESS VIEW!

Let us take care of keeping your windows clean.

Z TO A WINDOW CLEANING
ZAAVAN ANNEAR, OWNER



CALL TODAY! 515-298-9973
FULLY INSURED

SPECIALS

Mondays: Fajita Special (Dinner Menu) \$8.00
3pm - Close 16 oz. Dos Equis Draft only \$1.00

Tuesdays, Thursdays, Saturdays:
Margaritas 2 for the Price of 1

Wednesdays & Sundays: Kids Eat Free All Day (With Adult Paid Meal)

Lunch Specials:
Everyday Buy 1 Meal At Regular Price Get 2nd Meal 1/2 Off (Must Buy 2 Soft Drinks)

Now Serving: Seafood Tacos (Fish, Shimp or Crab)

Happy Hour: Monday - Friday 1pm - 5pm
Buy any pitcher of Margaritas & get 1 free order of Beef, Chicken or Cheese nachos. Try our new Mexican Mule \$4.99
All domestic bottles \$1.99 ea. All import beer \$2.49 ea.



Gift Certificates Available For Any Amount!

104 South 3rd Street
Guthrie Center
641-332-2139
Family Owned & Operated

Looking for a better return?



David Finneseth
203 N. 4th Street
Guthrie Center, IA 50115
641-747-3014

If you have CDs about to mature or other assets to invest, consider all of your options. Not only do our fixed annuities offer you a competitive return, they also offer you flexibility, security and guarantees.

To see how simple it can be to save for your future, contact me today.



FARM BUREAU FINANCIAL SERVICES

Auto | Home | Life | Business | College | Retirement

The guarantees expressed here are based on the claims-paying ability of Farm Bureau Life Insurance Company. Note: Bank CDs are FDIC insured, the other products referenced here are not federally insured. Farm Bureau Property & Casualty Insurance Company, Western Agricultural Insurance Company,* Farm Bureau Life Insurance Company*West Des Moines, IA. *Company providers of Farm Bureau Financial Services A132-ML-1 (8-14)

SUMMER FRIDAYS:
June 26-Sept. 25

Celebrating summer with casual outdoor dining on the deck, live music & lawn games from 5:30 to 8pm.

New rotating menu of garden salads, pulled pork sandwiches, fried chicken, burgers, chops, Swiss steak & Graziano sausage pasta.
BYO beer or wine.

Friday lunches from 11 am–1pm (Closed July 3)

The Gathering Table
Henry A. Wallace Country Life Center
2773 290th Street, Orient
Reservations Appreciated 641-337-5019

Got Radon?

Call the radon “problem solvers.”
Serving western Iowa for the last 15 years.



Radon Mitigation Service

Elk Horn, Iowa • 712-773-4748 • 712-579-1461


www.radonsafehomes.com
email: stramit@metc.net

ALLEN'S HANDYMAN

GOPHER & MOLE TRAPPER

Let Allen help get rid of those pesky critters!

Call 641-757-1101



Guthrie Center Appliance & Hardware



We have OVER 2300 movies to rent!

Open Mon. - Sat. 8am - 6pm

218 State St., Guthrie Center, IA
641-747-3973

Kenny Rogers to headline casino grand opening

The iconic singer will christen Wild Rose Aug. 7

By ANDREW McGINN
Special to the Lake Times

Even those who don't regularly gamble know the five basic rules:

- 1. You've got to know when to hold 'em.
- 2. Know when to fold 'em.
- 3. Know when to walk away.
- 4. And know when to run.
- 5. You never count your money when you're sittin' at the table.

There'll be time enough for countin' the night of Aug. 7 when the one and only Kenny Rogers christens Jefferson's new \$40 million casino-events center with a concert that undoubtedly will include "The Gambler," one of his many No. 1 hits from the late '70s.

Wild Rose Jefferson recently ended weeks of speculation by announcing the details of its grand opening weekend Aug. 7-9.

Who better to open a casino than the Gambler himself?

Rogers, who was inducted into the Country Music Hall of Fame in 2013, will get the honor of being the first act to play the casino's 1,000-seat Greene Room Event Center — not to mention one of the first

nationally known acts to ever play Jefferson (pop. 4,345).

Rogers will perform at 7:30 p.m. Aug. 7. Tickets, priced at \$41.50, are on sale now via the Wild Rose website, jefferson.wildroseresorts.com.

"Kenny Rogers is a legendary entertainer, and we wanted a performer of his stature to celebrate what the people of Greene County and the surrounding area have accomplished over the past two years," Wild Rose Chairman Gary Kirke said in a statement.

Wild Rose Jefferson still plans to open its doors Aug. 1 for gaming, with music, fireworks and more that following weekend.

The three-day grand opening celebration begins at 10 a.m. Aug. 7 with "A Token of Our Appreciation" giveaway. The first 200 people will receive a commemorative, custom-minted, fine silver Wild Rose token.

An official first dice roll is set for 5 p.m. Aug. 7 at the craps table, with a Chamber of Commerce ribbon cutting at 6 p.m. at the main entrance.

Up-and-coming country singer Brad Morgan will perform a free show at 9 p.m. Aug. 7 in Coaches Corner. No tickets are necessary. Morgan will perform a second free show at 8 p.m. Aug. 8 in the Greene Room.

A fireworks extravaganza is scheduled for 10 p.m. Aug. 7 in the front parking lot.

And then there's the unmistakable Kenny Rogers.

Aside from sporting the finest beard to ever grace country music, Rogers, now 76, has nearly two dozen No. 1 hits to his name, including "Lucille," "Coward of the County" and "Lady," a now-classic ballad written by Lionel Richie that held the No. 1 spot on the pop charts for six weeks back in 1980.

His 1983 duet with Dolly Parton, "Islands in the Stream," similarly conquered the country and pop charts.

His 1978 smash, "The Gambler," spawned a series of TV movies — helping turn Rogers into a cultural icon. And, accordingly, he hosted an episode of "The Muppet Show" in 1979 and took part in the recording of "We Are the World."

The same year he was enshrined in the Country Hall, Rogers also was honored at the 47th annual CMA Awards with the Willie Nelson Lifetime Achievement Award.

A native Texan, Rogers first came to fame as the frontman of the First Edition, a rock band whose hits in the late '60s included the far-out "Just Dropped In (To See What Condition My Condition Was In)" and "Ruby, Don't Take Your Love to Town."

The concert marks just the first in what will be a long line of concerts in Jefferson by nationally known entertainers — an unthinkable feat before June 2014, when the Iowa Racing and Gaming Commission granted Greene County a gaming license.

While tickets aren't yet on sale, the Oak Ridge Boys will be playing Wild Rose on Nov. 7.



SPECIAL TO THE LAKE TIMES

Governor's Awards Honor Environmental Leaders

DES MOINES

Twelve Iowa organizations and businesses will receive Environmental Excellence awards from Gov. Terry E. Branstad this summer. The awards are the premier environmental honors in Iowa.

"The vision and initiatives undertaken by the award recipients to benefit Iowa's citizens both economically and environmentally are recognized and celebrated through these awards. They showcase the commitment being made to make Iowa a better state now and into the future," said Gov. Branstad.

Gov. Branstad will present awards to the recipients at a recognition ceremony at 3 p.m. Aug. 4 in the Capitol Rotunda, located at 1007 East Grand Avenue in Des Moines. The public is invited to attend. The winners include:

Overall Environmental Excellence Award:

Cedar Rapids Community School District, Cedar Rapids Blank Park Zoo, Des Moines Fourmile Creek Watershed Management Authority, Des Moines

Special Recognition in Water Quality:

Cedar Rapids Linn County Solid Waste Agency, Marion Special Recognition in Waste Management:

Curries Division of ASSA ABLOY, Inc., Mason City Special Recognition in Energy Efficiency/Renewable Energy:

General Mills, Cedar Rapids University of Iowa Facilities Management, Iowa City Special Recognition in Habitat Restoration:

Guthrie Center Community Schools, Guthrie Center National Wild Turkey Fed-

eration, Edgefield Central Disposal – Waste Management, Lake Mills

Special Recognition in Environmental Education:

Dr. Joseph P. McGuire and Old Castle Materials Group, Le Grand

Guthrie Center Community Schools, Guthrie Center

For more information about the Governor's Iowa Environmental Excellence Awards, go to www.iowadnr.gov/ee-awards.

The awards are sponsored by the Governor's Office, the Iowa Department of Natural Resources, the Iowa Department of Agriculture and Land Stewardship, the Iowa Department of Economic Development, the Iowa Department of Education, the Iowa Department of Public Health and the Iowa Waste Reduction Center.

If you run a business, you now.
The most valuable things are also the hardest to get.

When something happens to your home, car, or business, it may not be a disaster. But whatever it is, you always deserve fast and fair service from your insurance company.

West Bend provides a Silver Lining, no matter what the claim may be. When a water pipe broke and flooded the reception area at Dr. Stevens' veterinary clinic, repairing it quickly and cleaning up the water damage with no disruption to the business was important. So that's just what we did.

Sometimes little things mean a lot. And every day, when something bad happens to someone, West Bend makes sure our customers experience the Silver Lining. Because the worst brings out our best.®

WEST BEND®
thesilverlining.com

For more information, contact:

BRYTON INSURANCE AGENCY
Chris Arganbright

128 W. Main St.
Panora, IA 50216
(641) 755-2123

Summer Is Here!

Keep your cooling system running smooth and efficiently.

Call Paul Today at **641-747-2014**

Lemke Repair "A Name You Can Trust"

Family Owned & Operated For Over 28 Years
After Hours Service 712-651-2575

Celebrating Our Freedoms

HAPPY INDEPENDENCE DAY FROM KEITH PETERSON
AND THE BOARD OF DIRECTORS OF
GUTHRIE COUNTY REC

Guthrie County REC
A "Joinsource Energy" Cooperative

1406 State Street • Guthrie Center
641-747-2206 • 888-747-2206 • www.guthrie-rec.coop

STAY COOL

WITH A NEW AC SYSTEM.

RELY ON RUUD™

GET ENERGY STAR® PRODUCTS
and save on utility bills!

SAVE MONEY
with high-efficiency
Ruud HVAC systems.

RUUD AIR CONDITIONERS

- ✓ RELIABLE COOLING
- ✓ QUALITY-BUILT
- ✓ HIGH-EFFICIENCY

2164 Hwy 25 • Guthrie Center
(641) 332-2198

DOUG'S PLUMBING & HEATING

In keeping with its policy of continuous progress and product improvement, Rheem reserves the right to make changes without notice.

**You
Deserve
To Look
Your Very
Best!**



Let the Professionals at Eye Care Associates
Take Care of You & Your Eyes
With Quality Eye Care and Eye Wear.

Eye Care Associates

James McCauley, O.D. • James Koch, O.D. • Kyle Stalder, O.D.
102 E. Main • Panora • 641-755-3699

M & A Storage

(formerly
Panora Rentals)

P.O. Box 261
Panora 50216



**510 W. Main • Panora
641-431-0421**

Many sizes available.
Clean and Secure.

**Pay for 6 months and
get the 7th month free!**

GRUBER
CONCRETE CONSTRUCTION
(formerly Ritter Concrete)

**WE DO QUALITY WORK AT
REASONABLE RATES!**

Flat Work – Skidsteer Work
Replacement Work

Tom and Terry
515-210-4515 OR 515-979-5079

Insured
Serving Lake Panorama over 30 years!

**ANTHOFFER
CONSTRUCTION**
Coon Rapids, IA

*Our pride is transforming your property into
a beautiful usable landscape!*


- Rip Rapping • Rock Walls
- Ground Clearing & Leveling
- Custom Made Docks

Call Us Today For A FREE ESTIMATE

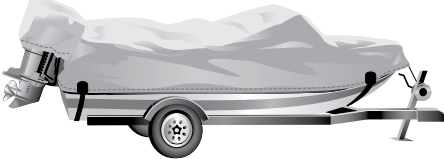
Daryl Anthofer, owner
712-684-5406

Family Owned For Over 40 Years!

**Now's the time
to make those repairs you've
been putting off.**



**Sails
Boat Covers
Lift Covers
Pontoon Canopies and Curtains**



Quality canvas repairs for over 30 years.

**JOHN BOYT
INDUSTRIAL SEWING**
3101 JUSTIN DRIVE • URBANDALE
515-270-7031
Toll Free 1-888-667-3744

**VENTEICHER
ELECTRIC, INC.**
HOME COMMERCIAL FARM

*Servicing Guthrie Center
and Panora areas for all
your electical needs.*

641-332-2675 OR 641-755-3638

*25+ years experience in
agricultural, commercial,
residential, industrial wiring
along with trenching
& boom truck services.*



**Know what's below.
Call before you dig.**

**It's the law and NOT
calling could cost you
money or your life!**

**Call 811 or
800-292-8989
www.iowaonecall.com**



PANORA TELCO
641-755-2424
www.panoratelco.com



**Lake
Panorama**
641-755-2301
www.lakepanorama.org



**Corner Stone
Landscaping
& Tree Care**

Tyler Carney, Owner
Landscape Designer
ICPI & NCMA Certified • Member INLA



LANDSCAPING & SERVICES:
Custom Designing • Patios & Outdoor Living Spaces • Retaining Walls
Water Features Landscape Lighting • Fire Pits • Outdoor Kitchens
Planting of Trees, Shrubs & Perennials



TREE CARE:
Tree Removal • Tree Trimming • Stump Grinding
Cabling • Risk Assessment • Shrub Trimming
• **Emerald Ash Borer Treatment**



**email: csl@windstream.net
641-742-3009 • www.csl-ia.com**

TAKE IT FROM OUR GOVERNOR

GREAT NEWSPAPERS COVERING A GREAT COUNTY.

"I'm also a property taxpayer in Guthrie County now. I tell you, it's a great place for our children and grandchildren to come. We really enjoy the friendliness and hospitality of the people here. We enjoy Guthrie Center and Panora and Springbrook State Park. It's great to be here. Doug Burns, I want to thank you. He wrote a great story about our place at Lake Panorama, with some nice pictures. We appreciate the good local media. You are blessed to have that here in Guthrie County." — **Gov. Terry Branstad in Guthrie Center**

Lake Panorama **TIMES**

You can't replace a life.

The demand for storm shelters is increasing across the United States as families realize the importance of a safe place to run to in the event of a severe weather event.

Perhaps the time has come to consider investing in a real shelter that is certified for F5 tornadoes and can be easily installed in any existing residence, new construction project, basement, garage or even outdoors in the yard or at your lake property!



Multiple Size Options!
Installs in half a day!

STORM SHELTERS OF IOWA
515-528-2042
WWW.STORMSHELTERSOFIOWA.COM

YOUR CAR DESERVES THE BEST!

NEW! State-of-the-art automatic carwash bays,
NEW! Turbo Dryers in the Self Service Bays



Our automatic wash bays can accommodate **Dually & Long Bed** extended cab pick ups!

ALL SEASONS CAR WASH

New CUSTOMER VALUE CARD

You can purchase a card, recharge your card, print a receipt and even check your balance at our new card vending machine.

EASY TO USE! CONVENIENT! AFFORDABLE!

Check us out on Hwy 44 West, Panora!
601 W. Main, Panora

Spa & Pool Doctor

Your Hot Tub Company At The Lake

Hot Tub Service

Call Us For All Of Your Spa and Pool Services!

Spa Removal & Moving/Relocation

"Keeping You In Warm Water At The Lake"

- Specializing In All Makes & Models
 - Spring Cleaning
 - De-Winterization
 - Spa Covers & Lifts



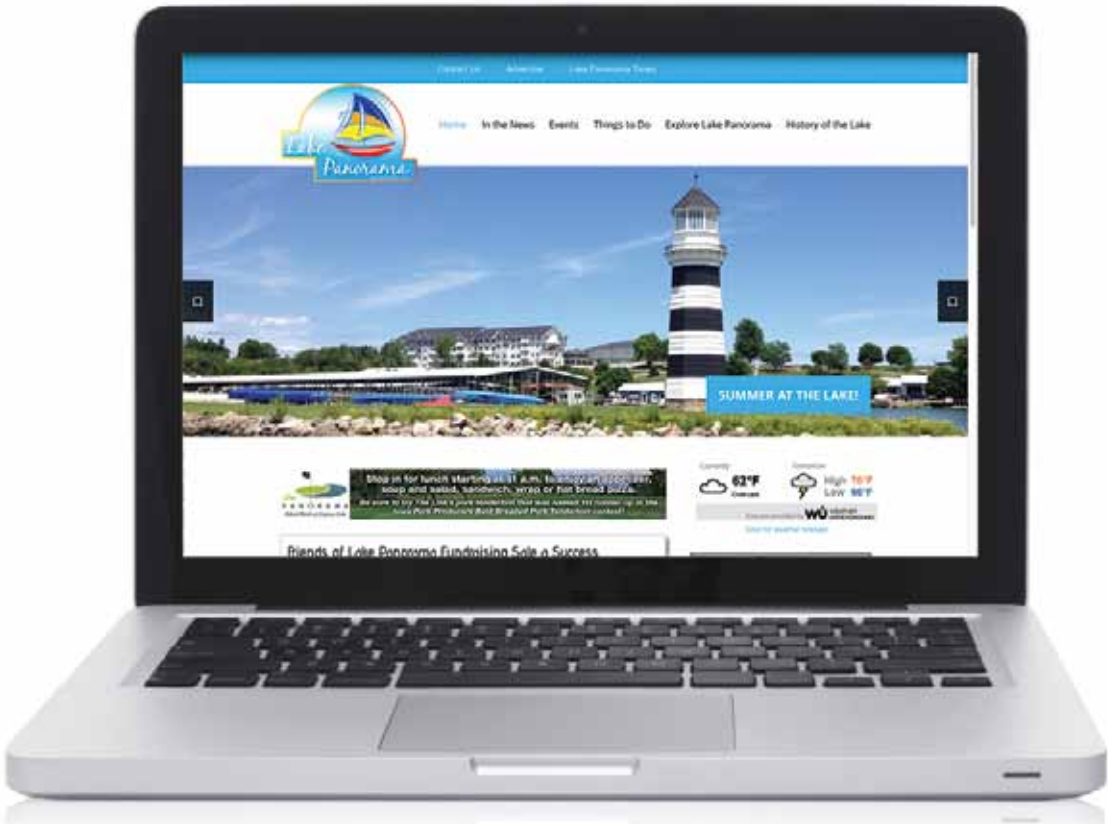
Call Shane Krugler
515-554-0017

or email us at

spaandpooldoctor@yahoo.com



**Your source for everything
in Lake Panorama!**



www.lakepanoramatimes.com

Read the latest issue of

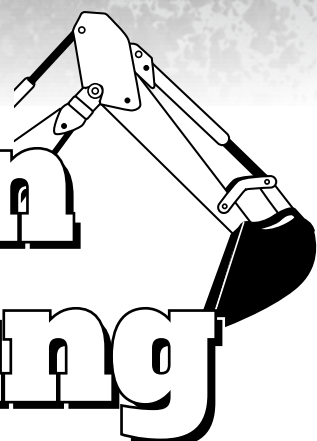
Lake Panorama **TIMES**,
area news, upcoming events & more!

If your business would like to be a part of the
Lake Panorama Times website call Stephanie at 641-332-2380

**LEAVE THE
HARD WORK
TO US!**

- **WATER & SEWER**
- **TRENCHING**
- **BACKHOE SERVICE**
- **BASEMENTS**
- **TRUCKING**
- **SNOW REMOVAL**

**Harmann
Excavating**



Matt Harmann, owner
Bus. 641-755-3640 • Cell 641-757-0907
Fax 641-755-3645
PO Box 307
Panora, Iowa 50216

SPARKS Renovations, Inc.



*From design to completion,
from custom home building to remodeling your
existing home, we're the company that
can meet all your building needs.*



MARVIN 
Windows and Doors
Built around you.™

Randy and Lisa Sparks, owners
3155 255th Lane, Panora
Home/Office 641-755-2055
References available
www.sparksrenovations.com

This classic boat on the lake, is not the only thing residents will be talking about. . .



Amish Haus offers the interior classics!



MANY STYLES—ONE STANDARD

3201 100TH STREET, URBANDALE, IOWA

(515) 270-1133 www.AmishHausFurniture.com



EXECUTIVE RANCH HOME ON 10 ACRES!!



25460 Beaumont Ave, Linden - \$689,900



Builder's own home, 5,000 sf of finish,
42x70 outbuilding, 20x40 in-ground pool.
Adjoining 265 acre farm also for sale.



Dave Crawford 515-453-5409 Jane Crawford 515-453-5193 Bob Weeks 515-453-5751



12 MONTHS
SPECIAL FINANCING AVAILABLE*

*The credit card is issued with approved credit by Wells Fargo Financial National Bank. Ask for details.



Now offering YETI coolers!



Saunas from \$1,995!

Spring Savings Event
Going on now!



Hot Spring Spas of Des Moines
10860 Hickman Rd
Clive, IA 50325
515-270-8702

12
months
Special Financing available

Agri-Bolt Hot Spring Spas
18134 Highway 71
Carroll, IA 51401
712-792-3376

www.hotspringgreen.com



CHOOSE PLAN TWO

Guthrie County Voters – It's Time for a Change!
There's a Better Way to Elect Our County Board of Supervisors

SPECIAL ELECTION: AUGUST 4

Make sure your vote gets counted!
Obtain an absentee ballot request form via email -
chooseplan2@gmail.com


Vote in person at the Guthrie County Auditor's office
weekdays 8 a.m. to 4:30 p.m.

Go to the polls August 4

**WHEN YOU VOTE...
CHOOSE PLAN TWO**

- ★ Supervisor Districts will be maintained to ENSURE each district has ONE supervisor on the Board
- ★ Supervisors will be ACCOUNTABLE to ALL VOTERS – NOT just voters from a single district
- ★ Supervisors will WORK for the good of the ENTIRE county – NOT just for what's popular in their district

Paid for by Choose Plan Two Committee



LAKE PANORAMA REALTY

Guthrie County State Bank Bldg. – 505 E. Main
Panora, IA (641) 755-3276
Licensed to Sell Real Estate in Iowa e-mail: info@lakepanoramarealty.com

GOOD SELECTION OF LAKE LOTS!

Waterfront Lots

319 & 320 6620 Panorama Drive.....	REDUCED! \$85,000	6011 4656 Panorama Drive.....	REDUCED! \$8,950
409 & 410 3060 & 3061B 2 A lots combined and 2 B lots combined. Approx 2 acres M/L with approx. 162.98 ft. water frontage.....	REDUCED! \$475,000	3150 4194 Panorama Drive.....	\$8,500
435 & 436 6928 Bumps Bend.....	NEW PRICE! \$165,000	5002 5209 Perry Point.....	\$8,000
509 Except Parcel A and Parcel A lot 510		35 6902 Panorama Drive.....	\$8,000
4631 Petite Point.....	NEW! \$105,000	3393 4004 Pinewood Rd.....	NEW LISTING - SALE PENDING! \$5,000
754 & 3784 - 4804 & 4806 Cail Point.....	NEW PRICE! \$189,900	C LOTS	
761 5243 Tie Road, Approx 87 feet water frontage (Except A & B of Lot 761A).....	OFFER PENDING! \$265,000	6050, 6051 & 6052	
872 6012 Tulip Court.....	NEW PRICE! \$49,900	4611, 4609, 4607 Jeanie Lane.....	REDUCED! \$22,500
944 & 945 - 6022 & 6024 Fairmont Drive.....	\$119,900	1130 5313 Corner Court.....	\$20,000
1173 5331 Panorama Terrace - Approx 110 ft. water frontage.....	REDUCED! \$250,000	1128 5309 Corner Court.....	\$20,000
3399 4016 Pinewood Rd.....	NEW LISTING! \$79,000	1129 5311 Corner Court.....	\$15,000
B LOTS		2936 6513 Jansen Cove.....	NEW \$14,500
11, 12 & 13 6902 / 6904 Weber Knob.....	NEW LISTING! \$59,900	1125 5318 Chimra Rd.....	\$12,750
1193, 1194, 1195, 1201, 1202,		2856 6527 Panorama Drive.....	\$12,500
5275 Panorama Terrace (1201).....	CONTRACT TERMS AVAIL \$55,000	1152 5301 Chimra Road.....	\$9,750
3029-3030-3031 6311-6313-6315 Panorama Dr.....	NEW! \$40,000	2942 6501 Jansen Cove.....	\$9,500
1583 AND 1623 5152 Panorama Drive.....	REDUCED! \$35,000	2855 6525 Panorama Drive.....	\$9,500
5031 5202 Panorama Drive.....	\$25,000	1159 5315 Panorama Drive.....	\$9,500
1449 5042 Fairway Drive.....	REDUCED! \$22,900	4460 6537 Panorama Road.....	\$8,500
1128 5309 Corner Court.....	NEW LISTING! \$20,000	4235 6820 Mack Road.....	\$9,000
1543 4903 McDermott Lane.....	SOLD! \$11,000	2836 6545 Panorama Rd.....	NEW PRICE! \$8,500
1544 4901 McDermott Lane.....	SOLD! \$10,000	6536 4306 Panorama Drive.....	NEW PRICE! \$7,997
5406 6801 Chuck's Hill.....	\$19,900	3354 4007 Maple Lane.....	\$7,000
		6152 4723 Canfield Corner.....	\$7,000

ASK ABOUT OFFSHORE OR ACCESS LOTS!

LAKE PANORAMA ASSOCIATION LOTS

EAST SIDE





Lot 1572 - Golf Course.....	\$25,000	Lot 2357 - Lake View.....	\$17,500
Lot 1453 - Golf Course.....	\$20,000	WEST SIDE (CONT'D)	
Lot 1601, 1600, 1599 and 1598 - Golf Course - 4 lots - many options.....	\$160,000	Lot 421 A - WATERFRONT.....	\$25,000
Lot 1613, 1614, 1615, 1616, and 1617 Golf Course - 5 lots.....	\$50,000	Lot 2921 and 2922 - 2 lots.....	\$35,000
Lot 3747 and 3748 - 2 lots - corner location.....	\$40,000	Lot 2845 and 2846 - 2 lots.....	\$25,000
Lot 3667 - Level wooded lot.....	\$20,000	Lot 2847 and 2848 - 2 lots.....	\$22,000
Lot 3687 - Large corner lot.....	\$25,000	Lot 333 A - 6526 Coven Court.....	\$10,000
Lot 6497 - Corner lot in Burchfield Cove area.....	\$15,000	WATERFRONT - June's Cove OFFER PENDING! \$30,000	
Lot 6457.....	\$10,000	6301 Panorama Drive - Corner Lot.....	SOLD! \$25,000
Lot 6043.....	\$10,000	Lot 784A and 785 A - WATERFRONT - 2 lots.....	\$75,000
Lot 6256.....	\$10,000	Lot 786A, 787 A, 788A - WATERFRONT - 3 lots.....	\$125,000
Lot 6461.....	\$10,000	Lot 884A, 885A, 886A - WATERFRONT - 3 lots.....	\$125,000
WEST SIDE		Lot 895A, 896A - WATERFRONT - 2 lots.....	\$100,000
Lot 34 - Wooded.....	\$13,500	Lot 897A, 898 A, 899A - WATERFRONT - 3 lots.....	\$125,000
Lot 37 - Good for walkout.....	\$18,000	Lot 4059.....	\$10,000
Lot 2352 - 6703 Panorama Drive.....	SOLD! \$12,500	Lot 2012.....	\$10,000
Lot 2353.....	SOLD! \$10,000	Lot 2092.....	\$10,000
Lot 2981.....	OFFER PENDING	Lot 2925.....	\$10,000
		Lot 2959.....	\$10,000
		Lot 2366.....	\$10,000
		Lot 3083.....	\$10,000

www.lakepanoramarealty.com

CRYSTAL MOTORSPORTS

Now Available!

CLIMATE CONTROLLED STORAGE



- Cars
- Boats
- Motorcycles
- Motorhomes

- Equipment Rental
- Full Boat Detailing

**2947 200th Street
Panora**

Call 515-201-8604



GE APPLIANCES

Slate Rebate

July 29 - August 11

Save Up To

\$1156⁹⁰*

Free Delivery

\$4726⁰⁰ Everyday Package Price

\$4299⁰⁰ Promotional Price*

-\$429⁹⁰ Additional 10% Savings*

-\$300⁰⁰ Rebate Savings*

\$3569¹⁰ Final Price After Savings

*with purchase of all 4 pieces

*Via mail-in or online rebate. See rebate form for details.



ENERGY STAR® 27.7 Cu. Ft. French-Door Ice & Water Refrigerator
GFE28HMHES

30" Free-Standing Electric Range
JB650EFES

1.7 Cu. Ft. Over-the-Range Sensor Microwave Oven
JVM6175EFES

Stainless Steel Interior Dishwasher with Hidden Controls
GDT580SMFES



WWW.ARCHERHOMECENTER.COM
618 GREENE STREET ADEL • 515-993-4241

Match anyone's price, BEAT anybody's service!



reimagining home