

Lake Panorama TIMES

DECEMBER 2023

Mailed to all property
owners at Lake Panorama
and on newsstands.

FREE!

SANTA COLLECTION BRINGS JOY

**MJ BROWN HAS MORE
THAN 300 VERSIONS OF
JOLLY OLD ST. NICHOLAS**

PAGE 6

**DOG KENNEL OWNER
LIVING HER DREAM JOB**

PAGE 18

**COVER CROPS HELP
PROTECT LAKE PANORAMA**

PAGE 38

**GRILLED HONEY-HERB
PORK LOIN RECIPE**

PAGE 44



YOU'D RATHER BE HERE!



SLOTS



TABLE
GAMES



HOTEL



COACHES
CORNER



SPORTS
WAGERING



SIMULCAST
RACING



WILD ROSE

CASINO & HOTEL • JEFFERSON, IA

JOIN
TODAY!

SCAN ME



JOIN TEXT REWARDS
AND EARN MORE!

Data and Messaging rates may apply.
If you or someone you know needs
gambling treatment call
1-800-BETS OFF.

Merry Christmas

and happy new year



*Lake
Panorama*
REALTY



Kane Powell
Broker/Owner

515-202-4910

kane@lakepanoramarealty.com

Dee Powell

Broker Associate/Owner

515-202-3312

deepowell@lakepanoramarealty.com



www.lakepanoramarealty.com

641.755.5253



Licensed to sell real estate in Iowa

Not intended to solicit already listed properties

505 E Main St, Panora, IA 50216

IMMEDIATE AVAILABILITY IN MEMORY CARE

- Private apartments with en-suite bathroom and walk-in shower with handrails for safety
- 24-hour care, hourly checks, and nurse on call 24/7
- Meaningful, life engaging activities with our FLY program
- 3 restaurant-style meals and hydration station with nutritious snacks available

Wishing everyone a
**Merry Christmas
& Happy New Year**

The
**Lakeside
VILLAGE**

2067 Hwy 4, Just north of Panora on the lake!

(641) 433-4757

thelakesidevillage.com

LEAVE THE HARD WORK TO US!

WATER & SEWER

TRENCHING

BACKHOE SERVICE

BASEMENTS

TRUCKING

**Harmann
Excavating**

Matt Harmann, Owner

641-755-3640 • Cell 641-757-0907

**CALL FOR
SNOW
REMOVAL!**

CONTENTS

ON THE LAKE PUBLISHER'S COLUMN	5
COVER STORY: MJ BROWN'S SANTA COLLECTION.....	6
2024 GOLF SEASON PASSES NOW AVAILABLE FOR PURCHASE	10
LOCAL FILM REVIEWS.....	12
SOUTH SHORE RECREATIONAL AREA NOW OPEN TO THE PUBLIC	14
FISH STOCKING COMPLETE FOR 2023.....	16
BUSINESS: DOG KENNEL OWNER NOW LIVING HER DREAM JOB	18
ASK LAKE PANORAMA TIMES	22
DEC. 5 LAKE PANORAMA RIZ BOARD SPECIAL ELECTION RESULTS	22
CONSIDER LAKE PANORAMA HISTORY BOOK FOR GIFT GIVING	24
PHOTOS: SCENES FROM SANTA'S VILLAGE	26
5 COMMON LANDSCAPING MISTAKES AND HOW TO AVOID THEM	27
WFPF HOLIDAY TOUR OF HOMES.....	28
BUSINESS: BRITCHES N BOWS TO OPEN IN QUINNEBAGO LOCATION	18
Q&A: ROYCE SHAFFER.....	30
GUTHRIE COUNTY FOUNDATION HOLDS FALL RECEPTION	32
OBITUARIES.....	34
TURKEY TROT DRAWS RECORD PARTICIPANTS.....	36
COVER CROPS HELP PROTECT LAKE PANORAMA	38
TRISH HART'S NATURE PHOTOS OF THE MONTH.....	40
LAKE DOG.....	42
COVE CAT.....	43
RECIPE: GRILLED HONEY-HERB PORK LOIN	44
AREA CHURCH GUIDE	46
TEN SQUARED WOMEN OF GUTHRIE COUNTY	48
WHERE IS IT?	49
CLASSIFIED ADVERTISING	51

ON THE COVER: MJ Brown holds one of her many Santas. Photo by Susan Thompson



111 East Main St., Panora, Iowa 50216

641-755-2115 | www.LakePanoramaTimes.com

To subscribe: Visit www.LakePanoramaTimes.com and click on the "SUBSCRIBE" link. Subscriptions are \$24 per year (12 issues).

EDITOR & PUBLISHER:

Shane Goodman

ADVERTISING DIRECTOR:

Jolene Goodman

ADVERTISING SALES:

Kerry Jacobsen

CUSTOMER SERVICE:

Cheryl Castile

EDITORIAL DESIGN:

Beckham Miller

ADVERTISING DESIGN:

Sadie McFarland

BUSINESS OFFICE:

Brent Antisdell

DISTRIBUTION:

Mike Chiston

EDITORIAL

CONTRIBUTORS:

Susan Thompson

Rich Wicks

Trish Hart

Jolene Goodman

Michael C. Woody

Cheryl Temple

Lynn Kuhn

Lake Panorama Times has the largest circulation of any news publication in the county and is a monthly publication of Big Green Umbrella Media Inc., an Iowa corporation. Contents 2023 Big Green Umbrella Media, Inc. All rights reserved. Nothing may be reprinted in whole or in part without permission of the publisher. Contact the publisher for permission to reprint articles or any other portions of the paper. A copy of this publication is mailed to all Lake Panorama Association property owners each month for free. Additional copies may be available upon request.

SUPPORT YOUR LOCAL BUSINESSES THIS HOLIDAY SEASON — AND ALL YEAR LONG

I like going to movie theaters. Comfortable seats. Big screens. And plenty of popcorn and candy. If you are looking for nearby theaters to visit during these cold winter months, you can find them in Stuart, Perry and Jefferson with many more in Des Moines and the suburbs. But, unfortunately, that list is dwindling.

Like many of you, Jolene and I used to go to a movie most every weekend during our dating years. That changed. Once married and with kids, when the discussion of new movies came up with others, I would sarcastically ask, "Did Disney make it?" At that stage in our lives, if Disney didn't make it, we likely didn't see it.

We all enjoyed those family movie outings, but as the kids grew older, they didn't think it was cool to go to movies with Mom or Dad anymore.

Jolene and I understood (kind of) and eventually started venturing out for movie date nights again, just not nearly as often as we used to. Blame it on streaming. Blame it on high costs. Blame it on a bad selection of movies. You can point the finger of blame in a variety of places, but as the old saying goes, when you point one finger, three more are pointing back at you.

When we lived in the small town of Nebraska City, Nebraska, a few decades ago, we had a wonderful movie house in town called the Pioneer Theater. It didn't have reclining seats, craft beer or pepperoni pizza back then, but it did have charm, and we were



Shane Goodman

fortunate to have it. My friend Scott O'Neil is a dentist in town and a regular at the theater. He told me years ago that he tries to go to a movie every week — whether it is a show he wants to see or not — to support the theater and help to ensure it will be there for years to come. When I last looked, it's still there, which is better than can be said in Johnston, or in Urbandale, or at Southridge Mall in Des Moines where theaters have closed.

Truth be told, we haven't supported our local theaters like my friend Scott does. And the recent closures are not-so-subtle reminders that we need to support all our local businesses or they simply won't be here — and not just movie theaters. We have a number of wonderful businesses in the area, many of which advertise their goods and services in the pages of this pub-

lication. Amazon and other online shopping sites will be just fine without your purchases. For that matter, so will Netflix and Hulu and Disney Plus. But the local merchants rely on all of us to at least consider their offerings, especially this holiday season. I am going to make an even more concentrated effort to support them this season, and I hope you will, too.

Merry Christmas to you all, and thanks for reading. ■

Shane Goodman
Editor and Publisher
Lake Panorama Times
515-953-4822, ext. 305
shane@dmcityview.com

Insurance made easy. It's called service.

Get a quote today



Robert Carr Insurance Agency Inc.
Robert Carr, Agent

111 S. 4th St., Guthrie Center, IA 50115
641-332-2263

robert@robertcarrinsurance.com

www.robertcarrinsurance.com



State Farm
Bloomington, IL

SANTA COLLECTION BRINGS JOY EACH HOLIDAY SEASON

MJ Brown estimates she has more than 300 versions of jolly old St. Nicholas.

BY SUSAN THOMPSON

Lake Panorama Times

The Santa collection that fills a Lake Panorama home each Christmas season began with just one. MJ Brown says that first Santa belonged to her grandmother, who loved Christmas as much as she does.

"It was special to me from the time I was a little girl," she says. "I remember looking lovingly at it then, even though it sat on a shelf out of my reach. I began adding Santas when my children were small, and decorating for Christmas took on a whole new meaning. Each year, more somehow appeared."

Brown isn't sure how many Santas now live in the home she shares with her husband, Dave.

"I suppose if you counted all the Santa ornaments on our three Christmas trees, the number would probably be over 300," she says.

It was the late 1980s when the Browns purchased two lots on Briar Cliff Court on the east side of Lake Panorama. They began building their home in 1994 and moved in spring of 1995.

"He wanted the water, and I wanted the woods, so we both had our wishes granted," she says. "We were able to buy the adjoining third lot a year later from our good friends and next-door neighbors Dave and Mary Ann Ostrem, who, along with a group of other friends, finally persuaded us to leave West Des Moines and enjoy lake life."

At the time, the Browns were putting in long hours in Des Moines each day at their family business, Critchett Piano and Organ Co. Bert Critchett, who founded the company in 1922, was Dave's grandfather.

"The move to Lake Panorama meant an additional two hours commuting, but the inconvenience was well worth it," MJ says. "Panora is about the size



MJ Brown holds a favorite Santa, with a lineup of other favorites on the fireplace mantel. Note David Brown is the only person who has a stocking hung with care.

of the town I grew up in, which was Central City in eastern Iowa. When we moved here, I felt as though I was coming home and found it easy to settle into the community."

Brown usually starts decorating for Christmas on Thanksgiving weekend.

"I have been fortunate the past few years to have friends willing to spend a day or two helping me unbox my Santas," she says. "Before that, it would take me at least two weeks to get things in order by myself."

Brown has a wide array of Santas.

"My collection consists of smaller collections grouped together in their own displays, primarily Fitz and Floyd, Pipka, Lenox and Lladro," she says.

"The living room tree features many Radko ornaments, and the tree in our bedroom is decorated in Wedgewood ornaments.

"Some of my other favorites are two intricately hand-painted Russian Santas we purchased while on a trip to St. Petersburg and others from Rothenberg and Cologne, Germany," Brown says. "Several House of Hatton Santas are from the former House of B store in Panora."

Brown says a whimsical Sticks Millennium Santa welcomes guests as they enter the house.

"Speaking of whimsical, I have a 4-foot-tall Santa frog purchased in Leavenworth, Washington," she says.

"He has a big round belly, red and white striped pants and is trimmed in white faux fur. No matter where the Santas came from, Victorian to whimsy, I love them all."

Since it takes so long to get her Santa collection in place each year, Brown says she likes to keep everything in place "well into January. Last year, our daughter's family from Seattle wasn't able to get here as planned due to the blizzards the entire country experienced over the holidays. I left one tree standing, and we celebrated Christmas on Mother's Day weekend when they could fly back."

Finding a place to store the Santas when they aren't on display is an issue.



This display of Lenox Santas is on a dresser in the master bedroom.

"All of my special pieces are in their original boxes, which is why it takes so much room to store them," Brown says. "When we did an addition onto our current home on the golf course, we added two large built-in cabinets in the garage that we thought would be sufficient. It still wasn't enough room, so we're using additional garage space in a large storage closet."

Brown says for the past few years, Dave has threatened to rent space on Panora's Main Street to set up a retail Christmas store, since he believes they have enough inventory to open a business.

"That's not going to happen," MJ says.

The Browns have six grandchildren. Four are adults now. Two 14-year-old



MJ Brown's collection of Santas includes five Fitz and Floyd cookie jars. These three are displayed on the kitchen island for the holiday season. Three granddaughters each have chosen one they someday want for their own.

Immediate Openings for **Tunneling & Auger Boring Operators & Laborers**

Iowa Trenchless is a premier boring and tunneling contractor seeking individuals with a great attitude valid driver's license and construction experience. CDL preferred.

Benefits include, 401k and competitive wages, 100% employers paid healthcare, some travel required with paid-time, lodging, and per diem meals. Background checks required due to security clearance. AA/EEO

Starting minimum wage is \$20/hour and we are offering a \$1000 sign on bonus.



To inquire, please call 641-755-4692 www.iowatrenchless.com

DO YOU SUFFER WITH NEUROPATHY? SUFFER NO MORE!

Get relief with no surgery, shots, or addictive and dangerous medications.

100% NON-INVASIVE — NO SIDE EFFECTS.

Imagine no more medication... but a proven long-term solution you can do at home for your:

- Numbness
- Diabetic nerve pain
- Sharp, electric-like pain
- Burning or tingling
- Muscle weakness
- Difficulty sleeping from leg or foot discomfort
- Sensitivity to touch
- Pain when walking

WILL IT WORK FOR YOU?

It's time for you to find out if this new treatment will be your neuropathy solution. **515-325-4325**

A SIMPLE 4 STEP PROCESS

We offer a scientific, 4-step, proven approach that heals your nerves and reverses your symptoms by:

- 1 Increasing blood supply to your nerves.
- 2 Repairing and re-educating your nerves.
- 3 Increasing the blood flow in your feet or hands.
- 4 Increasing your balance and mobility.

KEY POTENTIAL
CHIROPRACTIC

60 SE Laurel St, Waukee | keypotentialchiropractic.com



Dr. Madison Johnson, D.C.
Dr. Kelsey Pettitt, D.C., C.A.C.C.P.

WISHING
TO YOU
AND YOURS
TIME
TO ENJOY
THE
sweetest
OF HOLIDAYS!

102 W. Main Street, Panora
(641) 755-3128
@craftyscoffee

TUESDAY-FRIDAY 6AM-2PM SATURDAY 8AM-2PM
CLOSED SUNDAY & MONDAY

Crafty's
COFFEE



A large Christmas tree in the Dave and MJ Brown home is covered with Christopher Radko ornaments. Many of the ornaments are Santas. The ornaments are created in artisanal Polish factories, each piece handcrafted. The process includes glass blowing and hand painting.



MJ Brown's fascination with Santas began when she was a young child, admiring this Santa candle holder that belonged to her grandmother.

twin granddaughters are in West Des Moines.

"My grandchildren grew up with the collection and ask about the history behind their favorites," Brown says. "Within my Fitz and Floyd collection are five large, beautifully detailed Santa cookie jars, of which three of my granddaughters have already laid claim to. However, I can't part with them just yet."

To share her Santa collection with others, the Browns have opened their home twice for the annual Women for Panora's Future holiday home tour. Once was at the home they built on Briar Cliff Court and then again in the home they moved to on the fifth hole of the LPN golf course in fall of 2019. When Brown is asked to make a



A tree in the Browns' master bedroom features only Wedgewood Christmas ornaments. An employee began gifting a Wedgewood ornament to MJ Brown each year. Those annual gifts continue, even though that person is now a former employee. This is one of the Santa Wedgewood ornaments on the tree.

Rise & Shine
BATH SYSTEMS

Locally Owned in Panora, IA
10 Years Experience
Less Overhead = Less Cost
Buy Local and Save Money!
www.riseandshinebathsystems.com

515-901-8354

**CALL NOW
FOR END-
OF-YEAR
SAVINGS!**



JOIN US!

Guthrie County REC
ANNUAL MEETING

Saturday, Jan. 6, 2024
Guthrie Co. Fairgrounds

11 AM: Registration
11:30 AM: Free meal
12:30 PM: Business
meeting and drawings
for door prizes



Guthrie County REC
A "Sustainable Future" Connection



MJ Brown purchased this four-foot-tall Santa frog in Leavenworth, Washington. Besides Santas, Brown used to collect frogs. She says she has pared back that collection, but still has several frogs in her Santa collection.

presentation to area groups about her collection, she takes about 20 Santas along.

The Browns plan to host the Panora Methodist Church chime and vocal choirs for what MJ says will be an “after-Christmas Christmas party” in early January. “I have been the choir director for 20 years and wanted to take the opportunity to thank everyone for their diligent work,” she says. “Plus, it gives me an excuse to leave the decorations up a little longer.” ■



Tom Jeschke, who passed away in March 2023, was well known in the Lake Panorama community for his wood carvings. MJ Brown holds a Santa that Jeschke carved. It features piano keys wrapped around Santa, in recognition of the Browns’ business.



Brown poses with a Santa she has had for many years. It stands outside the Brown home’s front door to welcome guests.



**Know what’s below.
Call before you dig.**

**It’s the law and NOT
calling could cost you
money or your life!**

**Call 811
or 800-292-8989
www.iowaonecall.com**



www.Shootout-Storage.com
(712) 249-0041 • 3571 310th St., Dexter, IA
Located 20 minutes SE of Panora



Open Every Day Except Tuesday

STORAGE • CAR WASH • SALOON

**SERVICE BAY
NOW AVAILABLE**

- Boat Repair & Winterizing
- Car Repair/Oil Changes
- UTVs and Small Engine Repair

LARGE STORAGE UNITS:

15'x50' 15'x35' 15'x30'

SMALL STORAGE UNITS:

10'x15' 10'x10'

Valet indoor parking available

Outdoor storage available inside a secure fenced area

Call or visit our website for more information



www.panorafiber.com



www.lakepanorama.org



PRIME RIB SPECIAL

FRIDAY & SATURDAY | 5:30-8:30PM

ENJOY WITH FRESH SALAD BAR




SCAN FOR DAILY SPECIALS!



LUNCH: Mon-Sat. 11am to 1:30pm
DINNER: Wed.-Sat. 5:30-8:30pm.

618 McPherson St., Casey | (641) 746-3313 | Reservations Recommended

RECREATION

2024 GOLF SEASON PASSES NOW AVAILABLE FOR PURCHASE

Both Lake Panorama Association property owners and those who are not LPA property owners can purchase season passes.

BY SUSAN THOMPSON
Lake Panorama Times

A good way to stave off the winter blues is to purchase 2024 season passes to play golf at Lake Panorama National or Panorama West, or both.

Lake Panorama National is an 18-hole course located on the east side of Lake Panorama. Panorama West is a nine-hole course on the west side of the lake. Both courses are owned by the Lake Panorama Association and managed by Lake Panorama National.

Those who had season passes in 2023 at either course will receive 2024 season pass details by mail. Purchase forms also are available online and in the LPN pro shop.

Both Lake Panorama Association property owners and those who are not LPA property owners can purchase season passes. There are several options, with all options including free use of the Lake Panorama National driving range.

A Lake Panorama National 2024 season pass for LPA property owners is priced at \$2,795 for families, \$2,375 for couples, \$1,815 for an individual, and \$466 for junior golfers under the age of 18. An LPN season pass for non-LPA property owners is \$3,073 for families, \$2,655 for couples, \$2,096 for individuals, and \$466 for juniors.

For LPA property owners purchasing a season pass at Panorama West, fees are \$817 for a family, \$642 for a couple, \$467 for an individual and \$117 for a junior. For non-LPA property owners, Panorama West season passes are \$934, \$759, \$583, and \$117 for those same four categories.

Those who have never had a season pass at Lake Panorama National can purchase

a “special first time” pass. The cost for a family is \$1,782, for a couple it is \$1,467, and for an individual, the cost is \$969. LPN 2024 passholders who refer a “first time” person who purchases a season pass will receive \$50 in LPN pro shop credit.

Those who do not own a home at Lake Panorama, and who live more than 18 miles from Lake Panorama National, can purchase LPN season passes for \$2,376 for a family, \$1,957 for a couple, and \$1,292 for an individual.

Season pass details for the LPN swimming pool and fitness center also are on the 2024 forms.

Those using private carts on either golf course must pay a trail fee. At the LPN, members have the option of a cart lease, which entitles one person to a seat on an LPN cart for the season.

Other services listed on the 2024 forms are cart storage at both courses and a USGA handicap at the LPN. Those who play in the LPN’s leagues and handicap tournaments must pay the \$35 handicap fee. This fee is not required for Panorama West leagues.

All season pass purchases made by Dec. 31, will be entered into a drawing. Prizes awarded will include LPN Pro Shop shopping spree, \$500 value; Scotty Cameron putter, \$450 value; custom Titleist golf bag, \$250 value; one-nNight condo stay at LPN, \$249 value; 2024 family pool pass, \$190 value; 9-hole playing lesson with Rob Riggins, \$150 value; 2024 LPN men or women league entry fee, \$105 value; and \$100 gift card for The Links Lounge.

Forms to complete when purchasing season passes are online at <https://www.lakepanoramational.com/season-passes>. ■

Wishing You the Gift of Good Health!

Happy Holidays from Greene County Medical Center!

Greene County Family Medicine Clinic, Specialty Clinics, Public Health and the Medical Center outpatient services will be **CLOSED** for the following observances:

CHRISTMAS DAY Closed Monday, December 25th	NEW YEAR'S DAY Closed Monday, January 1st
---	--

Our Emergency Department will remain open, as it is always open 24 hours a day, 7 days a week.



WE'RE HIRING!

APPLY ONLINE!
GCMCHHealth.com/Careers

- RN ER, Nights
- Respiratory Therapist
- Radiology Tech
- Family Medicine Provider



**REPEATEDLY RECOGNIZED FOR A
SUPERIOR SALES AND SERVICE EXPERIENCE**



**New Stivers Ford PRO Elite
Commercial Service Center
opening 2024**

**Over 36,000 sq ft and 24 service bays
dedicated to your business needs**

Iowa's #1 Ford LINCOLN Dealer*



STIVERSFORDIA.COM 1.800.747.2744



Scott Polite, President
Stivers Ford Lincoln of Iowa



ON THE WAUKEE SIDE OF WEST DES MOINES

*Sales ranking based on car and truck sales report of the Kansas City Region of Ford Motor Company and Lincoln Motor Company for 2022

NEW, USED, AND COMMERCIAL VEHICLES



USED CAR SUPERSTORE



**LINCOLN
CERTIFIED PRE-OWNED**



**SERVICE & PARTS "OPEN Late"
& ON SATURDAYS.**

HOURS: 7AM-7PM (MONDAY-FRIDAY)

QUICKLANE OPEN SATURDAY 7:30AM-12 NOON



ALL MAKES COLLISION CENTER

FREE ESTIMATES



**WE GUARANTEE OUR WORK
FOR AS LONG AS YOU OWN YOUR CAR.**

EXPERT REPAIR. Rental cars onsite.

LOCAL FILM REVIEWS

MARVELS. MARSH. NAPOLEON. NEXT.

BY MICHAEL C. WOODY
Lake Panorama Times

Lots to talk about this month. Be careful because we will swing wildly from horrible to brilliant, embarrassing to charming, and disappointing to epic. Just your typical December!

“PRISCILLA”
(still in theaters)

As much as we know about the magic and mystery that was Elvis Presley, we don’t really know much about his wife, Priscilla, and, more specifically, how they met and fell in love. He was stationed in Germany, and she was still in high school. That was kind of creepy, but it seemed to get less creepy as their relationship developed. The two leads, Caliee Spaeny as Priscilla and Jacob Elordi as Elvis, are really good, and they do their best to hold the movie together. In the end, it is an interesting look at two people who we thought we knew everything about... and didn’t. It’s a sad tale of a love affair falling apart. **Grade: B**



“Priscilla”

“THE MARSH KING’S DAUGHTER”
(heading to streaming)

This is an odd movie about a little girl who grew up in a household of people living both off the land and off the grid. These survivalists eventually divorce, and the family scatters. The only child, a daughter, starts a new life away from her father. When he tracks her down years later, she needs to take him on to save her family. Not a great movie, but it was entertaining. **Grade: B**



“The Marsh King’s Daughter”

“THE MARVELS”
(in theaters but not for long)

Many people will say this release signaled the decline of Marvel’s box office success. I would argue that it happened two to three years ago with the release of “Shang-Chi and the Legend of the Ten Rings” and EVERY Marvel movie since then. That’s eight bad movies in a row. “The Marvels” gets an average grade, at best. **Grade: C**



“The Killer”

“THE KILLER”
(on Netflix)

When David Fincher directs a new movie, it immediately gets my attention. When the writer is his old buddy, Andrew Kevin Walker, I’m way beyond excited. They made a little movie titled “Seven” years ago, a flick I still consider to be brilliant. In “The Killer,” Michael Fassbender plays an assassin who botches his job and goes on a mission to track down why and who. It’s



Amana Gas Range
AER6603SF/B
White/Black/
Stainless
\$829
Delivered
(within 15 miles)
Convert to LP
\$100



Amana Smooth Top Range
AER6603SF/B
White/Black
\$799
Stainless
\$839
Delivered
(within 15 miles)



\$499
WHILE IN STOCK!
CLOSEOUT
Whirlpool Dishwasher
WDF540PADM



\$449
WHILE IN STOCK!
CLOSEOUT
Whirlpool Dishwasher
WDF540PADW



\$649
WHILE IN STOCK!
CLOSEOUT
Whirlpool Dishwasher
WDT730PAHW

*We hope your season is filled with Peace...
even if it's not peaceful here!*
Love, The Chapmans



BECKETT



BRECKEN



BRINLEY



PEARL



GRAYS



JORDAN



CASH



OWEN



LIAM



LUCAS



NORAH



JET



JACKSON



JAYDEN



ISABELLA

ADEL & Winterset
T.V. & APPLIANCE • HEATING & COOLING

Est. 1960

916 Main Street, Adel • **515-993-4287**
Mon-Fri 8-5, Saturday 8-2

224 Highway 92, Winterset • **515-462-2939**
Mon-Fri 9-5, Saturday 9-2

www.adelwintersettv.com

Always a good time to shop local!

PAGE 12 | DECEMBER 2023

LAKE PANORAMA TIMES

www.lakepanoramatimes.com



"Next Goal Wins"

a good movie but far from the anticipated greatness. **Grade: B+**

"NEXT GOAL WINS" (in theaters)

Taika Waititi has written and directed two brilliant films, "Jo Jo Rabbit" and "Thor: Ragnarok." "Next Goal Wins" is based on a true story about a small country, American Samoa, that is trying to win one soccer game. Actually, they just want to score a single goal. The team brings in a new coach, played by Michael Fassbender, who has his own issues. It's not a great film, but I laughed often — and loudly. **Grade: B+**

"WHAT HAPPENS LATER" (already out of most theaters)



"What Happens Later"

David Duchovny plays the role of a man who bumps into his ex-wife in an airport in the middle of a nasty storm. The ex-wife, played by, wait for it... Meg Ryan! Ryan also directed the film and had a hand in the writing chores. This is Ryan's tribute to Nora Ephron, who gave her a wonderful career. I wish this one had been better. **Grade: C-**

"WISH" (in theaters)

Disney offers this animated gift for the holiday season. "Wish" is the story of a young girl who lives in a place that celebrates people's wishes, and, once a year, one wish is granted. The young girl has been honored to be part of this year's event, but she finds that the king is not



"Wish"

who everyone thinks he is. "Wish" is a charming, funny and touching movie that will be lost in the Christmas season but still has potential to be another Disney classic. **Grade: A**

"NAPOLEON" (in theaters)

Joaquin Phoenix hooks up with Director Ridley Scott to give us a two-and-a-half-hour look at the life and loves of the legendary French general. It is a well-made movie, and Phoenix is strong. Not for everyone, but you can safely expect lots of Oscar nominations. **Grade: A-**

I hear a lot of very nice compliments about this column each month, and I want to say thanks for all of those kind



"Napoleon"

words. It's a fun gig, and I appreciate Shane letting me fill a little space in this fine publication each month.

Hurry and pass the popcorn because most all of us will be on our New Year diets by the time you read this. Happy holidays, and I will see you next year. ■

Michael C. Woody has been reviewing movies on radio and television since 1986 and can be heard talking movies every Wednesday afternoon at 2:30 p.m. on KXn0 106.3 with Keith Murphy and Andy Fales. You can also follow him on Twitter @MrMovieDSM. He and his wife, Susan, are residents of Lake Panorama.



organic & earth loving goods

Happy New Year!

closed Monday, January 15th thru 30th
for personal R&R vacation

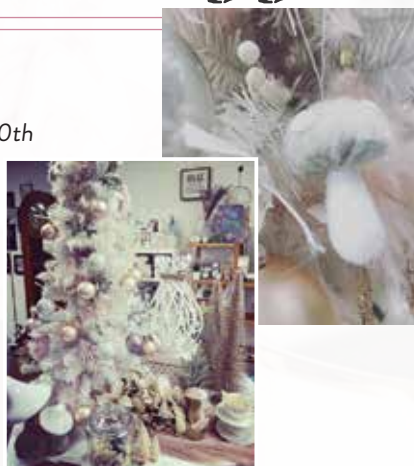
MEGA GIVEAWAY

Get one entry for
every \$25 spent in
store. Drawing will be
December 28.
Valued at \$500

Shop for crystals • incense • candles • essential oils • and more

Pink Poppy
APOTHECARY & CO.

106 S. 4th St., Guthrie Center • 515-729-6437



LOCALLY-OWNED CABINET DEALER OFFERING
IN-HOME CONSULTATIONS

CUSTOM DESIGNS SPECIALIZING
IN HOME REMODELING



AVID KITCHEN & BATH

2020 GRAND AVE, STE 1300, WEST DES MOINES, IA
515-410-1968 • WWW.AVID-KB.COM

SOUTH SHORE RECREATIONAL AREA NOW OPEN TO THE PUBLIC

Estimated cost to develop this new recreational area is \$35,000.

BY SUSAN THOMPSON
Lake Panorama Times

Both the disc golf course and the trail system on Lake Panorama’s south shore now are ready for visitors. The plan for these low-impact recreational amenities was developed by Friends of Lake Panorama and approved by the LPA board.

A fenced driveway begins at 5501 Chimra Road and leads to a parking lot that allows walk-through access to the recreation area. A small shelter near the parking lot is in place; a picnic table will be added in the spring. Beyond the shelter are two markers. One points right to the first hole of the golf course, and the other points left to the trail system.

The disc golf course features nine concrete tee pads with nine metal bas-

ket targets. Tee box signs showing hole distance and layout, plus hole sponsors, will be in place next spring.

The Lake Panorama disc golf course now is listed on UDisc, which is an app that lists more than 14,000 courses worldwide. Disc golfers use the UDisc app on their smart phones to keep score and navigate interactive course maps.

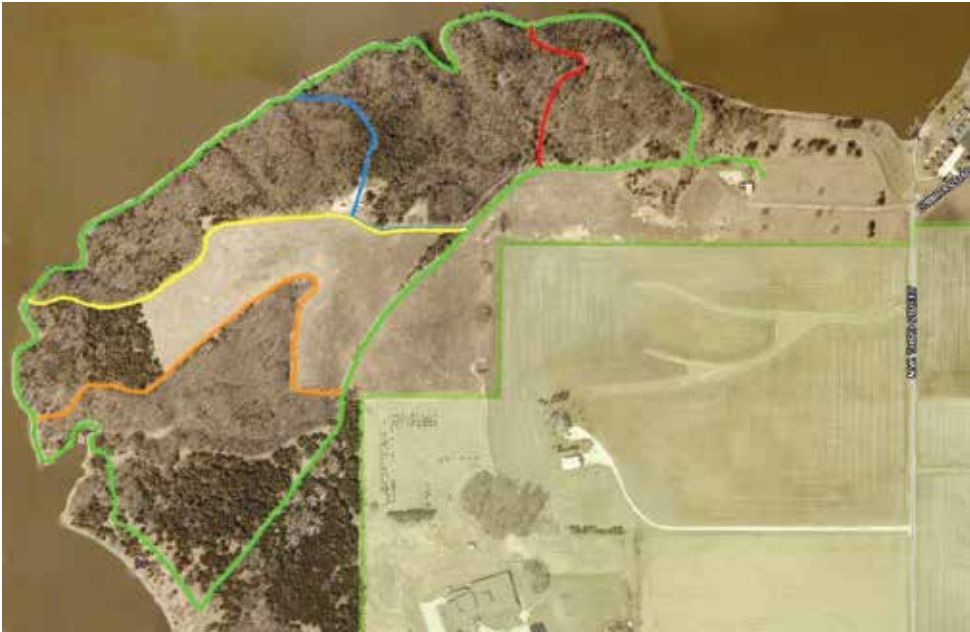
The Lake Panorama trail system has brown fiberglass trail markers located at trail system junctions marked on both sides with colored arrows. There are five trail options, each designated with a different color. Those who start at the trailhead and do the full loop to the shoreline and back up through the meadow area to return to the parking lot will walk two miles. Other trail options offer shorter distances.

The recreation area is open during daylight hours. Wheeled vehicles are prohibited. There are no trash receptacles, restrooms or running water; visitors should plan accordingly. Members and their guests who have registered with the LPA can hunt deer on the south shore from Nov. 1 through Jan.



SUSAN THOMPSON | LAKE PANORAMA TIMES

John Worth and his son, Jesse Worth, stand beside the basket on the first hole of the Lake Panorama disc golf course. John did most of the design of the course with input from Jesse.



SPECIAL TO LAKE PANORAMA TIMES

This aerial view of the south shore shows the various segments of the Lake Panorama trail system. The green trail is the largest loop, with the red, blue, yellow and orange trails offering a variety of distances and views.



SUSAN THOMPSON | LAKE PANORAMA TIMES

Fiberglass posts with this “No Entrance” message are located in areas where hikers are reminded to stay on the designated trail.



SUSAN THOMPSON | LAKE PANORAMA TIMES

Brown fiberglass posts are located at each junction of the trail system and marked on both sides with colored arrows. There are five trail options, each designated with a different color. This marker shows the blue trail to the right and the green trail continuing straight. Also shown is one of the blue fiberglass posts that designate the Panorama Schools cross country trail.



SPECIAL TO LAKE PANORAMA TIMES

Members of the Tuggle and Cates family braved the first snow of the season after Thanksgiving to play the Lake Panorama disc golf course. Shown left to right are Josh Tuggle, Matt Cates, Paul Cates, Mariah Tuggle and Mason Cates. Mariah's parents own a home at Lake Panorama. Paul is her father, Matt is her brother, and Mason is her nephew. The group is gathered around the basket on the fourth hole.

10. The area is restricted to bow hunting.

Next spring, 18 bluebird houses will be installed along the trails. If funds allow, four backless benches also will be installed along the trail, with two near the shoreline and two in the meadow area.

The estimated cost to develop this new recreational area is \$35,000. Over the past two years, Friends of Lake Panorama has received \$11,000 in private donations for projects on the south shore. Another \$4,000 has been donated this fall. Some funds are available from the 2023 Beach Ball and disc



SPECIAL TO LAKE PANORAMA TIMES

Mariah Tuggle prepares to throw a disc from the fourth hole tee pad on the Lake Panorama disc golf course. The basket is just across a small drainage ditch at the bottom of the hill. Josh and Mariah Tuggle live in Minnesota and are active disc golf enthusiasts. They are tee box sponsors for the sixth hole.

golf course tee box sponsors.

Additional donations are being sought. A welcome sign near the shelter will be added in the spring. It will include a Lake Panorama map, general information about the south shore recreation area, and a list of donors who have given \$500 or more to this project by Dec. 31, 2023.

Tax-deductible donations can be made by check payable to Friends of Lake Panorama, and mailed to Friends, P.O. Box 488, Panorama, Iowa, 50216. Donations also can be made through Venmo @Panorama-Friends, or by credit card at friendsoflakepanorama.org. ■

MERRY CHRISTMAS & HAPPY NEW YEAR!

FROM GAP CREEK QUILTING MERCANTILE....THANK YOU FOR SUPPORTING MY SMALL BUSINESS THIS YEAR, LOOKING FORWARD TO 2024!



112 N. 3rd Street, Guthrie Center • (641) 747-8575

DON'T LET THE WI-FI GRINCH STEAL CHRISTMAS FUN

Having lots of friends and family in your house this season, along with the new devices being gifted, puts extra pressure on your Wi-Fi network. If the Wi-Fi Grinch has his way, you'll experience annoying buffering and spotty internet service.

Panora Fiber offers the solution to keep the Christmas fun going — Managed Wi-Fi. It gives you extra coverage, extra convenience, extra security, and extra support.



To sign up for Managed Wi-Fi, call 641.755.2424 in Panorama or 641.332.2000 in Guthrie Center.

*Managed Wi-Fi is \$10.95/mo. Professional installation at \$89.95 is required. Fee waived with 2-year agreement.

PANORA
FIBER
Fast • Reliable • Local

114 E Main St
Panora, IA 50216
641.755.2424
panorafiber.com

403 State St
Guthrie Center, IA 50115
641.332.2000

It shouldn't take four days with no power, water, or communication to find out who your friends are.

**BUT
SOMETIMES
IT DOES.**

And that's the Silver Lining®.

To find out more about the Silver Lining, contact



128 W. Main St. • Panora, IA 50216
641-755-2123



CONSERVATION

FISH STOCKING COMPLETE FOR 2023

**Total of 1,050 walleye,
1,400 smallmouth bass,
1,500 largemouth bass
and 2,500 perch released.**

BY SUSAN THOMPSON

Lake Panorama Times

About \$18,000 worth of fish were added to Lake Panorama Nov. 2, funded by Fin and Feather. Fish stocking for 2023 included a total of 1,050 walleye with 300 of those 12 inches or more and 750 in the 6- to 9-inch range. There also were 1,400 smallmouth bass, 1,500 largemouth bass and 2,500 perch released this year.

The long-time supplier for the fish-stocking program is North Star Fish Hatchery, a third-generation, family-owned business in Montour, Iowa. North Star brought the fish to Lake Panorama, where the fish were introduced into the lake at Boulder Beach.

Fin and Feather stocks fish that range



Fish stocking for 2023 included a total of 1,050 walleye with 300 of those 12 inches or more, and 750 in the 6- to 9-inch range.

from 3 inches to 15 inches in length, depending on the species, to promote high survival rates. Fingerlings and fry are less expensive but have much lower survival rates. Stocking larger fish is a good investment, as more quality fish have been caught in Lake Panorama in recent years. This year, both species of bass were above the 3-inch mark and the perch and walleye were larger than

**NEED
NEU
BLINDS?**

**CONVENIENT
CONSULTING IN YOUR
HOME WITH SAMPLES**

**WE WILL
BEAT ANY
COMPETITOR'S
PRICE BY 10%!**

**Neu
Blinds**

**CALL OR TEXT TODAY
515-250-5543**

GRABER. | DELIGHT IN
EVERY DETAIL

- ✓ **FREE ESTIMATES**
- ✓ Easy and Affordable
- ✓ Many products to choose from
- ✓ **FREE INSTALLATION**
- ✓ Referrals

Owned and operated by James Neu of Johnston

Every house deserves Neu Blinds.



The supplier for the fish-stocking program is North Star Fish Hatchery. North Star brought the fish to Lake Panorama, where the fish were introduced into the lake at Boulder Beach. John Rutledge, LPA general manager, is shown releasing fish directly from the North Star truck into the lake.

PHOTOS BY LAKE PANORAMA TIMES | SPECIAL TO LAKE PANORAMA TIMES



About \$18,000 worth of fish were added to Lake Panorama Nov. 2, using funds raised by Fin and Feather. Included in this year's stocking were 1,500 largemouth bass and 1,400 smallmouth bass.

usual.

Volunteers in the non-profit Fin and Feather group have been stocking fish and working to improve fishing conditions in Lake Panorama since 1984. When the dam was closed in 1970, the only thing natural to the lake were crappie, largemouth bass, carp and catfish.

Besides stocking fish, the group helps improve fish habitat and sponsors an annual fishing derby for children during



Panorama Days. Fin and Feather raises its money through annual memberships and a fundraising banquet each spring. The 2024 banquet is scheduled for Saturday, May 11, the same date as the LPA annual meeting. The event will be held at the Lake Panorama National conference center, with social hour at 5 p.m. and dinner at 6 p.m. ■

The fish brought to Lake Panorama this year all were healthy, and some were larger than usual. This was one of the 2,500 perch released Nov. 2.

nual fishing derby for children during Panorama Days. Fin and Feather raises its money through annual memberships and a fundraising banquet each spring.

Local FARM FRESH BEEF for sale

SHOP WITH US! We have a great variety of cuts

All beef is raised as part of our farm operation.

Purchase at www.bcangus.com or call 641-740-5016.

Farm Store located at 1060 105th St., Adair
Owned and Operated by Blair and Erin Carney

Merry Christmas

From all of us at
Downings Farm to Fork LLC
2420 Teek Ave Panora, IA 50216

We have special holiday bundles and gift certificates for those last minute gift ideas

Every order over \$25 will be entered into our Christmas basket.

Access Lift LLC

REACH TRICKY PLACES EASIER!

Installing a lift can make access easier to the lakeside and hillside docks on steep hills.

- ✓ Installation of new lifts
- ✓ Upgrading existing lifts
- ✓ Repairing and servicing
- ✓ Trams & Hillside Trams
- ✓ Lakeside Lifts
- ✓ Access Lifts

Offering yearly service and maintenance to keep your machinery running smoothly

ACCESSLIFTLLC.COM
3076 130th St., Belmond • (641) 444-4844

DOG KENNEL OWNER NOW LIVING HER DREAM JOB

Anna Miller, owner of Mitzie Rue's Canine Corral, named the business after her first dog.

BY SUSAN THOMPSON

Lake Panorama Times

Mitzie Rue's Canine Corral, LLC opened in July 2019. Offering overnight boarding and day care for dogs, the facility is located on Highway 44 between Panora and Guthrie Center. Owner Anna Miller says she is a dog lover living her dream job.

"Dogs are my passion and my calling," Miller says. "I've had dogs my whole life. After college when I was having to pay for and board my own dogs when I couldn't take them with me, I began to plan my dream job. I wanted a fun and affordable place where everyone would want to board their dogs, feel comfortable leaving them in good hands, and where the dogs would enjoy being while their owners are away."

Miller grew up in Denison and graduated from high school there before attending DMACC in Ankeny to study commercial art. She met her future husband, Ian, in 2008 at an auto auction where she was working. He grew up in Adel and went to WYOTEC in Wyoming. He has worked as a mechanic for almost 20 years and now manages a shop in Grimes. The couple married in 2012 and have two children, Alice, who is 7, and Victor, who is 4.

The Millers lived in Earlham their first four years of marriage.

"I always loved driving through Guthrie County from Earlham to visit my parents in Denison," Miller says. "The countryside is beautiful. During one trip, I told my husband I wanted to move to Guthrie County. He said it was too far of a commute to where we were currently working, which it was."

Yet, once the couple got serious about opening a dog boarding facility, and it was time to start looking for an acreage, Guthrie County reentered the picture. They found a nearly 8-acre property with a house for their future family and a shed



Anna Miller is shown outside the main door to the Mitzie Rue's kennel. The Miller family has three dogs. With Anna is Raya, a 4-year-old terrier mix. The other dogs are Odin, a 13-year-old collie/pyrenees mix, and Edith, a 5-year old border collie mix.

that could be turned into a dog kennel.

"We knew this acreage was the perfect spot for what I had in mind," she says.

The Millers purchased the acreage in 2016. There were lots of legal steps that required working within county, state and federal regulations to become a licensed facility. Ian Miller started work on the kennel building in spring 2017, and the facility opened in July 2019.

Anna Miller grew up with Brittany spaniels, but the first dog she owned was three-quarters wolf and one-quarter husky. Its name became Mitzie Rue.

"I got her my sophomore year in college. She was one-and-a-half years old and rotten, but she quickly became a devoted, well-behaved companion. She was so loyal," Miller says. "I dreamt of a day when she could be beside me, working my dream

job."

A year after adopting Mitzie, Miller added a bird-dog mix named India, and the two dogs became pals.

"Both were able to move here with us and enjoy some life on the farm," she says.

Mitzie Rue is the face of the business.

"All my signs and logos are ones I designed of her," Miller says. "She passed away at 14 years old in 2017. My father passed away a month before her, to the date. After losing two of my best friends, I realized there isn't always tomorrow, and it was time to start building this dream. The day we buried Mitzie was the day we started drawing plans and making phone calls."

Mitzie Rue's has 14 kennels but is licensed to hold more if there are multiple dogs from the same household sharing a kennel. Miller says, when boarded, dogs

are rotated out to the play yard and run area.

"There is no limit on how many potty breaks they get; it's just a constant rotation," she says. "Potty breaks can range from 15 to 45 minutes, depending on the number of dogs we have and if they are in a kennel with access to the indoors."

Doggie day care is available Monday through Friday, by appointment, between the hours of 8 a.m. and 6 p.m.

"Day care gives your dog the opportunity to socialize with other compatible dogs and enjoy play time," Miller says. "I have a few that come every Tuesday and Thursday. I am very flexible with the duration and times, and I charge accordingly. As long as we have a kennel open, we can fill that spot with a day care dog."

If more than six months old, Iowa law



SUSAN THOMPSON | LAKE PANORAMA TIMES

The Mitzie Rue's sign is visible to both east and west-bound travelers on the south side of Highway 44, midway between Panorama and Guthrie Center. The Miller's family home and dog kennel are located nearby.

requires day care dogs be spayed or neutered. The dog also needs to pass a temperament test before being placed with other dogs.

Miller says most dogs that come for boarding are from Lake Panorama, Panorama and other Guthrie County locations.

"We get some from out-of-state who come here to visit family. We have cus-

tomers from Carroll County, Denison and several small towns ranging from 30 to 50 minutes away," she says. "We also get a lot of customers from the Des Moines area who travel here, looking for a small-town environment."

Weekends, holidays, summer months and spring break for area schools are Mitzie Rue's busiest time.



SPECIAL TO LAKE PANORAMA TIMES

These small dogs spending time in the Mitzie Rue's fenced yard not only had each other to play with this day, but also the Miller children, Alice and Victor.

Career Opportunity: Universal Banker

Guthrie County State Bank is seeking a new team member for the position of **Universal Banker** at our Guthrie Center location. We are seeking applicants who are self-starters, who thrive on building customer and colleague relationships and who enjoy living and working in a small community with access to the amenities of an urban area.

Responsibilities:

The Universal Banker works with customers to evaluate their needs to offer and educate about the appropriate financial products and services available. Responsibilities also include customer transactions, identifying referral opportunities and expanding existing customer relationships through promoting and cross-selling other bank products and services. This position reports to the Executive Vice-President and Cashier.

Job requirements include:

The Universal Banker will excel at providing courteous and personal attention to customers and prospects, and be able to work cooperatively in a team setting. This position must be able to listen carefully to complex customer issues and communicate solutions effectively while building strong relationships. A high school diploma or equivalent with at least 2 to 3 years of experience in financial industry, bank operations, and/or sales is requested for this position.

Visit gcsbank.com for more details on background and qualifications for this position.

We're happy to be neighbors, citizens, and reliable financial partners. Guthrie County State Bank has continued to serve as an employee-owned and independent community bank with all the benefits of our national big-bank counterparts. We offer a full suite of products and services to address your personal and business financial needs. Our team members understand the strong role community banks play and we encourage them to make an impact in the organizations they care about.

HOW TO APPLY:

Please send a resume and cover letter to Jamie Patrick at j.patrick@gcsbank.com



**GUTHRIE COUNTY
STATE BANK**
Connecting Communities

Guthrie Center

P.O. Box 8 • 413 State Street
Guthrie Center, IA 50115
PH: 641.332.2218 • TF: 866.747.2218
FX: 641.332.2693 • EM: gcsb@gcsbank.com

Panora

P.O. Box 757 • 505 East Main Street
Panora, IA 50216
PH: 641.755.2400 • TF: 877.755.2400
FX: 641.755.2344 • EM: gcsb@gcsbank.com

GCSBank.com



Guthrie County State Bank provides equal employment opportunities (EEO) to all employees and applicants for employment without regard to race, color, religion, sex, national origin, age, disability or genetics. In addition to federal law requirements, Guthrie County State Bank complies with applicable state and local laws governing nondiscrimination in employment in every location in which the company has facilities.

AUTO Image • Panorama

www.autoimagepanora.com

210 Main Street, Panora | 515-202-6210

LOCAL & TRUSTED CAR BUYING

NEED A CAR?

== CHECK WITH US FIRST! ==



**2012 Acura
TL TECH**

87,757 miles #008247

\$15,500



**2013 Chevrolet
Silverado LTZ**

138,377 miles #232337

\$18,500



**2013 Lexus
RX350**

109,364 miles #211008

\$17,900



**2015 Jeep
Cherokee LTD**

85,592 miles #736668

\$17,900



**2016 Jeep
Cherokee Sport**

100,447 miles #255444

\$12,900



**2016 Jeep Wrangler
Willys Wheeler**

44,612 miles #191085

\$24,900



**2017 Ford
Escape S**

119,660 miles #C04674

\$9,900



**2019 Ford
Edge SE**

127,590 miles #B31880

\$13,900



**2022 Jeep
Renegade Latitude**

118,174 miles #N54619

\$18,900



SUSAN THOMPSON | LAKE PANORAMA TIMES

Anna Miller stands at the counter in the office and reception area. Barn boards and tin from the original building that was turned into the dog kennel were used to create the office area.

"We usually book up for Thanksgiving and Christmas a month in advance, but it's always worth a call to be put on the wait list in case of any cancellations," Miller says. "Most times we can accommodate last minute bookings, as long as we aren't full."

Miller decorates for each holiday. Dogs booked during Thanksgiving receive a complimentary feast that includes home-grown green beans, sweet potatoes and squash from the family's garden. Dogs booked at Mitzie Rue's during holidays always go home with some kind of goodie.

It isn't just the holidays when visitors get the royal treatment.

"All dogs staying with us get bedtime snacks, and I play doggie lullabies at bedtime," Miller says. "We are a family oriented, family-owned small business. Many of our customers have become like friends and family, always thinking of our kids during the holidays and on vacations. Along with their dogs, they have become



SUSAN THOMPSON | LAKE PANORAMA TIMES

Ace was a recent guest at Mitzie Rue's, while his owners, Mark and Deb Jorgensen of Lake Panorama, were on vacation.



SPECIAL TO LAKE PANORAMA TIMES

Each month, Anna Miller chooses a customer of the month, which she says is based on good behavior, length of stay, or just all around a pleasure to have. The November 2023 customer of the month was Max, whose owners are Ed and Kathy Mahlstedt of Bagley.



SUSAN THOMPSON | LAKE PANORAMA TIMES

Anna Miller's artistic talents are evident in this painting of her dog Mitzie, which hangs on the office wall. Miller studied commercial art in college.

loved by our family."

Miller says the business has been more successful than she ever expected, and she is quick to give credit to others for that success.

"If it weren't for my husband saying 'yes, you can do this; your dream is possible' and physically building it, and for my late father always believing in me and putting his family first, this dream would never have become reality," she says. "I wish Dad and Mitzie were here to see it, but I trust in God's plan and know they are a part of it in so many ways."

Miller says Mitzie's legacy lives on, because her customers know her name and her face.

"And I get to talk about her almost every day," she says. "This truly is my



SPECIAL TO LAKE PANORAMA TIMES

Anna and Ian Miller pose for a family photo with their two children, Alice and Victor.

dream job, and I enjoy every single day. I believe that shows through in how much we care for and enjoy our customers. Without our customers, who have loyally stuck with us since we first opened, we wouldn't be where we are today."

Mitzie Rue's has a Facebook page, plus a website at www.mitzierues.com. Contact Miller by calling 641-755-3793 or emailing mitzierues@outlook.com. ■

LAKE PANORAMA BARGE SERVICE

OFFICE: 641-755-3351
DANNY'S CELL: 515-971-0226

lpbargo@att.net



Offering



ShoreStation®
BOAT HOISTS

Make Us Your *First* Call!

PESTS ARE LOOKING FOR A WINTER HOME, DON'T LET IT BE YOURS!

- Locally owned and operated
- Free estimates and no contracts
- Licensed and Insured
- All work is guaranteed
- Products used are people and pet friendly

Fall is the time that Asian Beetles, Box Elder Bugs, and Rodents are actively looking for a Winter Home!

Give us a call, we handle them all!



Panora, IA

Dale Hochreiter: 641-757-0605
Jamie Galivan and Max Monthei



We wish you a wonderful holiday season and a happy New Year! We look forward to working with you in the years to come.

MERRY CHRISTMAS!

BUMP & BUMP

— ATTORNEYS AT LAW —

JEFFREY N. BUMP WILLIAM E. BUMP JOHN D. TWILLMANN

WWW.BUMPLAW.COM

222 E Market St., Panora | info@BumpLaw.com | (641) 755-2131

Lake Panorama ASK TIMES

Submit your questions at www.lakepanoramatimes.com or email shane@dmcityview.com.

Q: HOW THICK SHOULD ICE BE ON LAKE PANORAMA BEFORE PEOPLE SHOULD BE ICE FISHING?

A: Some people have steadfast rules about how many inches ice should be to make it safe to fish, but the reality is that no ice is 100% safe ice and any journey across it comes with risks. In other words, safety depends heavily on the quality of ice — not just the thickness. Even so, most people agree that less than 4 inches of ice is not safe to walk on. According to outdoors.com, 4 inches can generally support one person on foot, provided it's just a person and a tent. Five to 7 inches can support a snowmobile or small ATV. Nine to 10 inches can support a small car. Thirteen inches can support a medium truck. Sixteen to 17 inches can support a heavy-duty truck. And 20-plus inches can support a heavy-duty truck with a wheelhouse shelter.

Q: WHAT DOES IT MEAN WHEN LAKE WATER IS SAID TO “TURN”?

A: According to U.S. Geological Survey, many lakes experience a “turning” of water layers when seasons change. In summer, the top of the lake becomes warmer than the lower layers. Since warm water

is less dense than colder water, it stays on top of the lake surface. But, in the winter, lake surfaces can get quite cold. When this happens, the surface water becomes denser than the deeper water with a more constant year-round temperature (which is now warmer than the surface), and the lake “turns” when the colder surface water sinks to the lake bottom.

Q: DOES LAKE PANORAMA FOLLOW THE IOWA DNR REGULATIONS FOR HUNTING? WHAT ABOUT TRAPPING?

A: According to section 6.3 of the LPA Rules and Regulations guide, all rules and regulations regarding fishing, hunting, and/or trapping promulgated by the Iowa Department of Natural Resources are adopted by the Lake Panorama Association. Hunting within the confines of Lake Panorama Subdivision is prohibited, except in such areas and under such conditions and regulations as may be designated and established from time to time by the Lake Panorama Board of Directors. Trapping is generally prohibited but may be allowed under certain controlled situations with special permission by the Lake Panorama Association. Contact the LPA office with any specific questions. ■

ELECTIONS

JOHNSON, HEMPHILL RE-ELECTED TO RIZ BOARD

BY RICH WICKS
Lake Panorama Times

Guthrie County Auditor Dani Fink provided results of the Dec. 5 special election to elect two members (trustees) to the board of the Lake Panorama Rural Improvement Zone (RIZ). Trust-

ees JoAnn Johnson and Doug Hemphill were both running for re-election to the board. Johnson received 65 votes, and Hemphill received 64. No other votes were tallied. Johnson and Hemphill will have three-year terms and will continue to serve with fellow trustees Bill Dahl, Larry Petersen and Corey Welberg. ■



Targeted Advertising

to tranform your business

Contact **KERRY JACOBSEN** today!
kerry@iowalivingmagazine.com or 515-619-2788



Friends of Lake Panorama

A public nonprofit charity supporting recreational amenities at Lake Panorama

CELEBRATING 10 YEARS!

For the next 12 months, Friends of Lake Panorama will be celebrating its 10th anniversary! Articles of Incorporation were filed with the Iowa Secretary of State's office November 1, 2013. The first meeting of the Friends of Lake Panorama board of directors was December 3, 2013.

On January 17, 2013, an application for 501(c)(3) nonprofit designation was submitted to the IRS. A letter from the IRS dated July 2, 2014 stated the Friends of Lake Panorama is exempt from federal income tax, and contributions to the public charity are deductible under federal law.

With the help of many donors and the LPA, Friends has had a busy 10 years. Sunset Beach playground opened in July 2016. Boulder Beach sports courts opened in June 2018. Many other successful projects followed.

- Shady and Boulder beaches playground improvements
- Panorama West rain garden
- Lake Panorama dog park
- Sunset Beach sports court
- Panorama West Nature Trail
- LPN Shade sails
- 20 new benches at beaches and golf courses

In August 2017, Friends received a \$473,700 estate gift from Jim and Joyce McLuen to be used at the Panorama West Golf Club. That estate gift turned an already good golf course into something truly special.

The current priority project is a package of low-impact recreational amenities on Lake Panorama's south shore. The Lake Panorama trails system is in place, with the Panorama Schools cross country trail incorporated. The disc golf course is open for play, with tee box signs coming in the spring.

Also complete are a fenced driveway to a parking lot that provides walk-through access to the recreation area, and a small shelter near the parking lot. Other additions in 2024 will be a picnic table in the shelter, and benches and bluebird houses throughout the recreational area.



In recognition of Friends of Lake Panorama's 10th anniversary, please consider a 2023 tax-deductible donation!

Donor Name/Names: _____ Mailing Address: _____

My gift is in Memory of or Honor of: _____ For Friends updates, please provide email: _____

Direct your charitable donation by marking one or both of the funds below. To split your donation, indicate percentages or dollar amounts for each fund chosen.

☐ **South Shore Projects** _____ ☐ **Friends General Fund** _____

To donate by check, make it payable to Friends of Lake Panorama. Complete this coupon and mail it, along with your check, to Friends of Lake Panorama, PO Box 488, Panora, IA 50216.

Direct donations can be sent via Venmo @Panorama-Friends. Donations also can be made by credit card online at friendsoflakepanorama.org.

Questions or suggestions? Contact Susan Thompson, 515-240-6536, or staff@friendsoflakepanorama.org.

More information about past, present and future projects is available at www.friendsoflakepanorama.org.

**CALL TODAY
FOR YOUR
AUTOMOTIVE
REPAIR AND
TIRE NEEDS!**
641-755-4444

**PANORAMA
TIRE**

418 E MAIN ST, PANORA
Monday-Friday 7:30a-5p • Saturday 8a-noon • Sunday CLOSED

HISTORY

CONSIDER LAKE PANORAMA HISTORY BOOK FOR GIFT GIVING

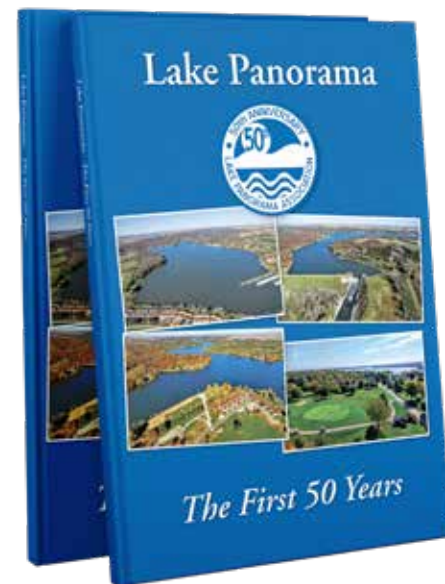
**ONLY 80 BOOKS
REMAIN IN STOCK.**

Looking for a holiday gift for family or friends, or perhaps new neighbors at Lake Panorama? Consider purchasing one or more copies of "Lake Panorama – The First 50 Years." The book, authored by Susan Thompson, arrived at the Lake Panorama Association office July 19, 2019.

The full-color, hardcover 112-page book includes both historic and contemporary photos. Chapters in the book describe six decades of planning and development. There are special topic chapters on Lake Panorama's golf courses, infrastructure and water quality efforts. Sidebar stories highlight various groups and activities such as Lake Panorama ski team, Fin and Feather, Fourth of July fireworks and more.

The LPA financed the book's production. About 1,000 books were printed, and now just 80 books remain in stock. The book's cost is \$25, which includes tax. LPA will ship at an additional cost of \$5 per book. Once ordered online, books will be shipped from Panora in seven to 10 business days.

Books are available for direct purchase at the LPA front desk Monday through Friday, 8 a.m. to 4:30 p.m., and in the Lake Panorama National Resort pro shop during business hours. Purchases can be made at the LPA and



Just 80 copies of "Lake Panorama – The First 50 Years" remain available for purchase at a cost of \$25. The LPA will ship online purchases for an additional \$5 per book.

LPN via cash, check or credit card. The book also is available at the Panora Library, with purchases cash or check only.

Here is the link to order online and have one or more books shipped: <https://lakepanorama.formstack.com/forms/order> ■



Edward Jones

> edwardjones.com | Member SIPC

Feeling like you paid too much in taxes this year?

Contact your financial advisor today to learn about investing strategies that could benefit you.



Dave Grove
Financial Advisor
611 East Main St
Panora, IA 50216
641-755-3213



Melissa Loest
Financial Advisor
205 State St
Guthrie Center, IA 50115
641-747-3899

CALL TODAY FOR A QUOTE!

641-757-0893



**Jensen
PUMPING SERVICE**

DNR Licensed Septic Pumper and
Time of Transfer Inspector
Family Owned and Operated Since 1977

Merry Christmas

from our family to yours.



Thanks for your business in 2023.
Wishing you a great 2024.



515-993-4241 • 618 GREENE STREET IN ADEL
WWW.ARCHERHOMECENTER.COM

SCENES FROM SANTA'S VILLAGE



Boston Betzer enjoys a moment with Frosty and one of Santa's reindeer at the Panora Community Center on Dec. 2



Makenzi Walker and Lane Walker frost cookies as one of the day's activities.



Leo Grove and Gracie Grove tell Santa what they would like for Christmas this year.



Mike Ketelsen, Kristen Crouthamel and Jamie Galivan serve pancakes at the Community Center for Santa's guests.



Dale Hochreiter, Frosty the Snowman and Riley Gibson share the Christmas spirit.



Josiah Baumgartner makes sure Santa knows he should be on the nice list. ■

PHOTOS BY SHANE GOODMAN | LAKE PANORAMA TIMES

GARDENING

5 COMMON LANDSCAPING MISTAKES AND HOW TO AVOID THEM

BY LYNN KUHN
Special to Lake Panorama Times

Tis the season to dream about a landscaping project. That's right! Winter is the perfect time. The best way to ensure your dream becomes a reality is to avoid these common mistakes.

MISTAKE NO. 1 – LACK OF PLANNING

This is at the top of my list due to the stress it may cause for the client, designer and contractor. Avoid this stress by doing the following.

Start the design process one or two seasons before you want the project completed. For example, if you want a project completed in spring, then start planning late fall/early winter. Meet with your designer and/or contractor before the snow falls so you can walk around the property and see the existing landscape.

The design and quoting process takes more time than you think. To have a meaningful quote, you need to start with a solid design. Most projects require one or two revisions to end up with a design solution that meets your needs and your budget.

Speaking of budgets, if you have a budget, share it with your designer and contractor during the first meeting. However, most people do not have an understanding of what landscaping features cost and, therefore, don't know what level of investment to budget for. The best way to handle this is to collect images of landscape features you are interested in, bring them to the initial meeting, and ask the contractor for a range of

what they may cost, which an experienced contractor will likely be able to do.

Lastly, communicate your priorities to your designer by ranking them. This guides the design process and material selection, too. The more information you provide, the better. An experienced designer will take that information and explore design solutions that you may or may not have considered.

MISTAKE NO. 2 – IMPROPER SCALE

It is very common for landscaping to be out of scale with the house or the property as a whole. This shows up in various ways. Here are a couple of examples.

A two- or three-story house should have wider landscape beds and taller trees to make it look nestled into the surrounding landscape. Unfortunately, it is all too common to see narrow beds alongside tall homes, making the plants appear as if they are pushed up against it. Keep in mind the taller the house, the taller the plants should be. This can be a challenge in neighborhoods with narrow side yards. Plants with columnar form can help in these situations.

The overall size of the property should inform the amount of landscaping that is appropriate. It's all about balancing positive and negative space. An acreage may require tree groupings and broader sweeps of vegetation in certain spots to enhance the property while a townhome may require compact plants in smaller groupings.

MISTAKE #3 – WRONG PLANT IN THE WRONG SPOT

Thoughtful plant selection is the key to avoiding this very common mistake. It starts with knowing what role or function you want from the plant. For example, on the front corner of the house, you may need an anchor plant that does not exceed 15' tall, loves full sun, tolerates clay soil, provides winter interest, and won't rub up against the house. That's a lot of boxes to check.

The next step is to make sure the beds are wide enough to accommodate the plants. Many homeowners make the mistake of creating beds, THEN deciding what to plant. This often leads to creating a high-maintenance situation resulting in an overly pruned landscape, which is not aesthetically pleasing unless you are at Versailles.

If you start with a solid landscape design created by a designer with plant knowledge, this can be avoided.

MISTAKE NO. 4 – LACK OF STRUCTURE & ORGANIZATION

Structure, often referred to as the framework, is very apparent this time of year. It's the foundation of the entire landscape. It consists of structures (deck, pergola, fire pit, walls, etc.) plus woody plants (trees and shrubs) and how these elements are arranged. For example, are the trees planted in groves or in lines?

When elements are haphazardly placed in the landscape, it looks unorganized. There is no flow or connection between the spaces. There is no logic. It feels chaotic. Lack of structure and organization may be apparent in the framework, as well as the softer elements within the framework, such

as herbaceous plants (perennials, annuls, ornamental grasses).

MISTAKE #5 – LACK OF ALIGNMENT

The landscape is so dynamic as it is growing and shifting constantly. Your lifestyle and values may also change over time. Down the road, you may end up with something you simply don't like. These shifts make it challenging to know what elements to include and what level of investment to make in your property. Alignment between the landscaping project and what is truly important to you requires a deeper dive into what you value and how that shapes your landscape project. I recommend starting with defining your WHY. Ask yourself...

Why do I want to make this investment? How do I want to use my outdoor space? How do I want to feel when I'm in it? How do I want others to feel? What are my goals? Perhaps you'd like to connect with your grandchildren, entertain friends, or simply unwind after a long day.

Once you've reflected on what's truly important, you can create an outdoor environment that you will love for years to come. ■

Written by Lynn Kuhn, author of "Conversation Gardens: Where Conversations Flow and Relationships Grow." She is a landscape architect, speaker and owner of Conversation Gardens (formerly Outdoor Transformations). You can reach Lynn at lynn@conversationgardens.com or www.conversationgardens.com.



Want to reach Lake Panorama Residents?

ADVERTISE IN THE

Lake Panorama TIMES

Mailed to all property owners!





Contact me today!
Kerry Jacobsen
cell: 515-619-2788
kerry@iowalivingmagazines.com

Dedicated to the ones you love

TWIGG FUNERAL HOME

GUTHRIE CENTER
(641) 332-2032
506 Prairie Street

PANORA
(641) 755-2211
219 E. Main Street

www.twiggfuneralhome.com

- Burial Services
- Cremations Services
- Pre-Planning



Curtis Twigg and Craig Twigg

EVENTS

WFPF HOLDS HOLIDAY TOUR OF HOMES

Special to Lake Panorama Times

Women For Panora’s Future (WFPF) held its annual Holiday Tour of Homes on Sunday, Dec. 3 from 1-4:30 p.m. Four homes were on the tour, as well as Twin Vines Winery. The home tour usually raises enough money to award \$500 scholarships each spring to two graduating Panorama Community School students. The tour is the group’s largest annual fundraiser with other key fundraisers being an annual raffle for a monthly plate of cookies or a pie and a can collection drive in May and June. Homes that were on the tour are owned by Paula Wachholtz, Troy and Stephanie Reinhart, James and Julie Tibbles, Kenny and Sonya Pierce, and twins Brad and Ben Hayes, owners of Twin Vines. The first Christmas home tour was in 1978 with 70 people attending. ■



MALLORY QUICK | SPECIAL TO LAKE PANORAMA TIMES
At Twin Vines Winery, the railing is lined with wine bottle bags, not stockings.



MALLORY QUICK | SPECIAL TO LAKE PANORAMA TIMES
Decorations at Twin Vines Winery.



MALLORY QUICK | SPECIAL TO LAKE PANORAMA TIMES
The home of Troy and Stephanie Reinhart



MALLORY QUICK | SPECIAL TO LAKE PANORAMA TIMES
The home of Paula Wachholtz



MALLORY QUICK | SPECIAL TO LAKE PANORAMA TIMES
The scenic view of the lake outside James and Julie Tibbles’ home.



MALLORY QUICK | SPECIAL TO LAKE PANORAMA TIMES
Outdoor decorations at the home of James and Julie Tibbles.



MALLORY QUICK | SPECIAL TO LAKE PANORAMA TIMES
Decorations in the home of James and Julie Tibbles.



JOLENE GOODMAN | LAKE PANORAMA TIMES
Mary Beidelman and Kim Heiland serve as hosts for Troy and Stephanie Reinhart.



JOLENE GOODMAN | LAKE PANORAMA TIMES
Melissa Rizzuti, Patsy Goss and Carla Fitzgerald host for Paula Wachholtz.



JOLENE GOODMAN | LAKE PANORAMA TIMES
Sonya Pierce



JOLENE GOODMAN | LAKE PANORAMA TIMES
Julie Tibbles

BUSINESS
**BRITCHES N BOWS COUNTRY
STORE AND BOUTIQUE
TO OPEN IN FORMER
QUINNEBAGO LOCATION**



RICH WICKS | LAKE PANORAMA TIMES

Kandi Meinecke signs the lease for the new location of her business.

BY RICH WICKS
Lake Panorama Times

For many years, Kandi Meinecke has operated Britches N Bows Country Store and Boutique from her home in rural Panora. With the recent closing of the Quinnebago/Lexie Lou's store, Meinecke saw this as an opportunity to move her business into a downtown lot that will provide the space she needs as she works to ex-

pand her offerings. Meinecke was the winning bidder when the Quinnebago building was recently auctioned. "We just want to expand our business," she said. "We've been out here for 25 years. We're going to offer some additional services that we don't offer now." Meinecke said the business will be a full-blown floral shop, providing florals for every occasion, and making deliveries. "And we're going to have a coffee bar with specialty coffee drinks and treats," she said. "We will be selling home décor, gifts, cards, a variety of items like that." She also stated that the business will set up displays in the basement area, as they also decorate for weddings and have wedding rentals. Meinecke said the official opening day for the new location is uncertain, but she said she hopes by March 1. She currently employs a few part-time employees but said, "I will have to have way more staff in there. Three full-time and probably three part-time." Some type of grand opening event will be held, but Meinecke said she does not yet have an official date or details. ■



A fresh logo for the new store.

Sandwiches
Wraps • Ice Cream

Dine-in | Takeout



BREADED TENDERLOIN

Gift Cards available

DAILY SPECIALS

Monday-Friday every week!



SOUTHWEST SALAD



SMOKED PULLED
PORK SANDWICH

Located on Hwy 44 | 600 E Main St, Panora ■ (641) 755-4264

**Give the Gift
of Health!**



Gift certificates available for Nutrition Response Testing, Ozone Sauna, health and nutritional supplements/products.

Purchase products off the shelf to get well and stay well!



www.synergywellness.info

109 N 1st Street, Guthrie Center

jess@synergywellness.info

Office: 641-332-2104

Fax: 866-491-2107

@synergywellnessia

@synergywellness



In network with most insurance companies. Call us to find out if you're covered.

To stay up to date on what's happening at Lake Panorama National Resort, follow us on Facebook at www.facebook.com/LPNResort, or keep an eye on our website at www.lakepanoramanational.com. If you don't already receive the LPN Resort Weekly newsletter, you can subscribe by visiting our website, then scroll down to the "Get the Latest News" section and sign up with your email address. ■

GUTHRIE COUNTY FOUNDATION HOLDS FALL RECEPTION

Board also opens grant application period for 2024.

BY SHANE GOODMAN
Lake Panorama Times

The Guthrie County Foundation held its fall reception on Nov. 14 at 6:30 p.m. at the Panora Community Center. Members of the various organizations that received grants for 2023 each gave a short presentation showing what they used the grant funds for.

The foundation is also now accepting 2024 grant applications until 12 a.m. on Wednesday, Jan. 31. Organizations applying must be a 501(c)3 or have the same tax-exempt qualifying status and located

within Guthrie County or providing services to Guthrie County residents. The application link and instructions for applying are available at www.GuthrieCounty-CommunityFoundation.org.

The 2024 grant application process will use a single streamlined online application form with additional questions included for grants requesting more than \$25,000. The foundation will award approximately \$200,000 in 2024 for projects benefiting Guthrie County.

The Guthrie County Community Foundation is governed by an advisory board with members from across Guthrie County. Current board members are Ryan Albers, Andrew Arganbright, Susan Belding, Tamara Deal, Joni Dvorak, Mary Ebert, Diane Flanery, Carla Hilgenberg, JoAnn Johnson, Kirby Klinge, Regina Lloyd, Ben Smith, Bret Wedemeyer and Julie Zajicek.

The mission of the Guthrie County



SHANE GOODMAN | LAKE PANORAMA TIMES

Pictured from the fall reception are, front row: Page Arganbright, Jo Rasmussen, Heather Hellman, Chaille Crandall, Miseen Hernandez, Bethany McCool, Laura Robson, Kristine Jorgensen, Becky Carrico, Leah Becker and Julie Moberg. Second row: Bob Rogers, Dennis Flanery, Jotham Arber, C.W. Thomas, Rick Guisinger, Pat Young, Jessica Schultz, Mike Carey, Matt Richter, Logan Wolf and Stephen Martinson. Third row: Kurt Schlatter, Jon Halbur, Jacob Pinegar, Natasha Adams, Jess Leighty, David Guisinger, Heather Schneider, Tracy Stetzel, Matt Harmann, John DeLaverge, Tabor Lincoln, Matt Reising, Brad Halterman and Josh Renslow.



Big Boy Toy Sale

Now Shop From Home!
LAKELUMBER.COM

Lake Lumber Co.

405 E. Clay St | PO BOX 520 | Panora, IA
lakelumber.com | 641.755.2385

POWER TOOLS
HAND TOOLS
GRILLS
SHOP VACS
GLOVES

GRANT RECIPIENTS FOR 2023:

Applicant	Project	Total Funded
Adair Volunteer Fire Department.....	SCBA Filling Station.....	\$5,000
Bayard Church of Christ.....	Feeding area school children during summer.....	\$10,000
Boys & Girls Club of CSWT.....	Building Bright Futures.....	\$8,572
Casey Library Betterment.....	Outside Building Repair & Updates.....	\$2,500
City of Coon Rapids.....	Little League Equipment.....	\$1,000
City of Coon Rapids/CR Fire Department.....	Airpacks.....	\$15,000
City of Panorama Police.....	Technology Update.....	\$5,000
Coon Rapids Bayard Education Foundation.....	Teacher Grant Program.....	\$1,000
GC Fair Foundation.....	Fairgrounds Bathhouse Renovations.....	\$5,000
Guthrie County Conservation Board.....	Lenon Mill Park Tree Replacement.....	\$2,500
Guthrie County Historical Village Foundation.....	1900 Youtz Carriage House.....	\$5,000
Guthrie County Hospital Foundation.....	Hospital & Clinic Equipment.....	\$20,000
Guthrie County Public Health.....	Community AED Placement.....	\$9,625
IA College Access Network.....	Raising Attainment Levels.....	\$1,500
Little Charger Early Learning Center.....	Capital Campaign.....	\$50,000
Little Panther Daycare.....	Playground, Security, Chairs.....	\$3,000
Mary J Barnett Memorial Library.....	Outdoor Electronic Sign.....	\$5,000
Menlo Fire & Rescue.....	Updating Firehouse.....	\$5,000
Menlo Public Library.....	Resources for Youth Reading Program.....	\$1,000
Panora EMS.....	Communications Upgrade.....	\$10,000
Panora Volunteer Fire Department.....	Rope Rescue & Transport Equipment.....	\$11,000
Panorama Booster Club.....	New District Activities.....	\$5,000
Stuart Fire Department.....	Radio Upgrades.....	\$15,000
Women Food & Ag Network.....	Women on Water.....	\$500
Yale Community Club.....	Community Club Building.....	\$5,000
Yale Fire Department.....	Old Grass Truck Upgrades.....	\$5,000
Total Requested/Allocated.....		\$207,197

Community Foundation is to foster giving, strengthen service providers, and improve the local conditions and quality of life. If you are interested in serving

on the board, visit www.GuthrieCounty-CommunityFoundation.org. Questions may be directed to GCCFoundation@gmail.com. ■

WHY WAIT FOR THE NEW YEAR?

NEW CLIENTS!
TRY OUT 3 CLASSES

FOR ONLY \$**20**

Qualified instructors
Evidence-based Fitness classes
Premium equipment • And more!
Book your complimentary tour today!



RESHAPE
FITNESS STUDIO

102 SE 13th St. , Panora
(515) 321-8521
reshapepanora@gmail.com



Required Minimum Distribution Reminder

As the end of the year and the holiday season is quickly approaching, we get busier and busier and it is easy for important things to fall through the cracks. One thing that we want to make sure we never miss out on is taking our annual Required Minimum Distribution (RMD) if you are 73 or older. Failure to take your RMD in a timely manner results in Uncle Sam receiving 50% of what your allotted RMD would be. One way to ensure this doesn't happen is to take your RMD periodically throughout the year, whether that be monthly, quarterly, or biannually.

HOW IS A REQUIRED MINIMUM DISTRIBUTION CALCULATED?

Generally, your RMD is calculated for each account individually by dividing the prior year balance on December 31st by your life expectancy that the IRS publishes each year. Some people may have more than one IRA, and no, you are not required to take an RMD from each IRA.

IF YOU HAVE QUESTIONS REGARDING YOUR RMD'S OR MAKING END OF YEAR CONTRIBUTIONS IN AN IRA, please reach out to schedule a time and I would be more than happy to discuss.



Contact Brandt Today!

PH 515.630.3507 • TF 888.583.0989 • TXT 515.532.7142
EM brandt.gebel@jordancreekfs.com

Panora
P.O. Box 757
505 East Main Street
Panora, IA 50216

Guthrie Center
P.O. Box 8
413 State Street
Guthrie Center, IA 50115

calendly.com/brandt-gebel



Registered Representative, Securities offered through Cambridge Investment Research, Inc., a broker-dealer, Member FINRA/SIPC. Investment Advisor Representative, Cambridge Investment Research Advisors, Inc., a Registered Investment Advisor. Cambridge markets securities and advisory services through Jordan Creek Financial Solutions. GCSB Investment Center and Cambridge are not affiliated. Non-deposit investment products are not FDIC insured, not bank guaranteed, and may lose value.

OBITUARY

▶ OBITUARIES PUBLISH FOR A FEE OF \$40. SUBMIT COPY AND PHOTOS TO SHANE@DMCITYVIEW.COM



CHRISTOPHER C. REYNOLDS

1955-2023

Christopher C. Reynolds, 67, passed away on Nov. 28,

2023, at his home in Panora.

Chris wished to be cremated with a celebration of life for friends and family, which will be planned for a later date.

Chris was born on Dec. 11, 1955, the son of Audrey and Garnet (Hansen) Reynolds. He grew up in Panora and graduated from Panora-Linden High School in 1974. Chris was an outstanding four-sport athlete for the Panora-Linden Hawks. He was also crowned Homecoming King. After graduation, Chris went to work for Burgess Construction. Shortly after, he started his own business, R & C Construction, with his good friend, Aaron

Christofferson. For more than 40 years, Chris and Aaron built many homes and condos at Lake Panorama and the surrounding areas. They had a gift for their trade and were well known for building dreams from the ground up.

In his early years, Chris enjoyed many fun weekends with friends as he played a mean third base for the Panora Merchants fast-pitch softball team and later played slow-pitch with the Branson Decorating team. Chris enjoyed fishing, jeeping, woodworking, and entertaining his friends and family in his shop. He would never let you forget his passion for the Iowa State

Cyclones. You never left his place thirsty.

Chris did not know a stranger. He always had an opinion to share. His infectious laughter and heartfelt conversations effortlessly created bonds that lasted a lifetime. He had a heart of gold, and his fun-loving nature not only touched his family, but everyone who knew him. The last 15 years, his struggles with multiple sclerosis finally took a toll. He had many friends just a phone call away willing to help when his pain required assistance. We will all miss his big smile, his laughter, his jokes and, most of all, his company.

Left to cherish his memory

are his brother, Ron (Kristie) Reynolds of Panora; nieces, Ashley (Steve) Schable of Carroll, Chaille (Damon) Crandall of Panora; and nephew, Cole (Emily) Reynolds of Clive. Great nieces and nephews: Cade, Camryn, Chase and Colt Schable, Cruz and Cacen Crandall, and Drake and Ande Reynolds. His special friend, Vickie Kirtley, her son, Cody (Ruth) Hayes of Altoona, and their children, who knew Chris as Papa, Aiden, Emma, Rylen and Kayson; many cousins; and countless good friends.

Chris was preceded in death by his parents, Audrey and Garnet Reynolds, and his son, Reid Carlton (1992). ■

Pamper me package

- 1hr Spa Facial
- 20 minute reflexology foot massage
- Candy Cane foot scrub & mask

Regular: ~~\$145~~
NOW: \$125

Sapphire Skin Co.
107 n 1st st.
PANORA
712-450-0455

COME IN & WARM UP
HOMEMADE SOUPS
AVAILABLE EVERYDAY!

Café On The Hill
EST. 2021
641-332-2310

Breakfast & Lunch

DAILY LUNCH SPECIALS
Known for our hot beef and homestyle lunch specials

OPEN AT 6:30AM FOR BREAKFAST
Biscuits & Gravy • Pancakes • Bacon
Cinnamon Rolls • MORE!

(641) 332-2310
2003 State St., Guthrie Center
MON•WED•THU•FRI•SUN 6:30 AM - 1:30 PM
(Tuesday & Saturday CLOSED)

CALL US FOR CATERING & GROUP MEALS!

OBITUARY

▶ OBITUARIES PUBLISH FOR A FEE OF \$40. SUBMIT COPY AND PHOTOS TO SHANE@DMCITYVIEW.COM



DAVID ROLAN RUTLEDGE

1949-2023

David Rolan Rutledge, 74, passed away peacefully at his

Guthrie Center home Tuesday, Nov. 28, 2023, where he spent his final days in the company of loved ones. David was born July 14, 1949, to Rolan and Mary (Klecker) Rutledge in Dubuque. David grew up in Dubuque and graduated from Wahlert High School in 1967. He attended Loras College, then Iowa State University, where he earned a bachelor's degree in design.

While at Iowa State University, David met Trudy Jane Garrett. They married on May 29, 1971. David and Trudy briefly lived in Kansas City, Missouri, before relocating to Trudy's hometown of Guthrie Center. They moved to Guthrie Center during the April Blizzard of 1973 and began their family shortly thereafter. To their marriage, three sons were born —

John, Robert and Thomas.

David spent the majority of his career in construction, first working for his father-in-law, John Garrett, and later working independently. He enjoyed challenging projects and embraced the opportunity to be creative. In retirement, he owned and operated a gun shop in Guthrie Center, where he enjoyed conversations with friends and customers as much as he enjoyed buying and selling guns. David was an active member in the community, serving on the Guthrie Center Volunteer Fire Department and the city council. He was an elder and deacon at the First Christian Church.

David had a lifelong passion for hunting, fishing and spending time outdoors. A highlight of

every spring was his fishing trip to Trout River Lodge in northwest Ontario. He looked forward all year to sharing this annual adventure with family and friends. In autumn, David could be found in the Iowa timber bowhunting for whitetail deer. He cherished the solace of the wilderness, as well as the camaraderie he enjoyed sharing outdoor pursuits with family and friends.

David was preceded in death by his parents. He is survived by Trudy, his wife of 52 years, who lovingly cared for him during the final chapter of his life. Also surviving David are sons John (Tricia) of Panora; Robert (Danelle) of Longmont, Colorado; and Thomas (Amy) of Guthrie Center; grandchildren

Kael and Emma (John); Drew and Eden (Robert); Jalen (Thomas); siblings Connie (Earl) Rohr of Clermont, Florida; John Paul (Lynn) Rutledge of Webster Groves, Missouri; and Gary (Lori) Rutledge of Castle Rock, Washington; plus several nieces and nephews.

Visitation was held at the First Christian Church Fellowship Hall, Guthrie Center, on Sunday, Dec. 3, 2023, from 5-7 p.m. Funeral services were at the First Christian Church, Guthrie Center, at 10 a.m. on Monday, Dec. 4, 2023, with burial following the service at Union Cemetery, Guthrie Center. Twigg Funeral Home was entrusted with his services.

Memorials may be left to the discretion of the family. ■

REAL PEOPLE. REAL BANKING.

*Thank you
for your business!*



Iowa Trust

120 E. Main St., Panora
641-755-2141
www.iowatrustbank.com



Lobby Hours: M-F 9am - 4pm • Drive-Up Hours: M-F 8am - 5pm • Sat 8am-12pm

we give the gift of...

Skilled Nursing **Long-Term Care** **Assisted Living** **Independent Living**

The New Homestead
a senior living community
kind • compassionate • care

2306 State Street
Guthrie Center, Iowa 50115
641-332-2204

www.TheNewHomestead.org

RELIABLE AUTO BODY SERVICES

SINCE 1980

No matter how your car gets damaged, we'll make sure it gets fixed right. No short cuts. No compromises. And remember, where you get your car repaired is NOT your insurance company's decision, it's yours.

***So make the right choice.
Olson's Body & Paint, we do that!***

**Auto Collision Repair Services • Auto Paint Services
Auto Body Work**



42 YEARS OF SERVICE

**Call today for a FREE ESTIMATE
515-987-1735**



555 W Hickman Rd, Waukee

EVENTS

TURKEY TROT DRAWS RECORD PARTICIPANTS



Runners and walkers of the annual Turkey Trot begin their trek.

BY RICH WICKS
Lake Panorama Times

The annual Reshape 5K Turkey Trot run was held on Thanksgiving morning at Twin Vines Winery, just west of Panora on Highway 44. A brisk but sunny 30-degree morning didn't chill the enthusiasm, as the event drew a record 107 registrants. According to event director Sue Bump, the event has a longstanding challenge in which, if registration reaches 100

or more, Ben Hayes, co-owner of Twin Vines Winery, will run as well. As a result, Ben went the distance.

Jonah Niedermeier was the overall first-place finisher in 18:16. Lacey Fulton was the first female finisher, clocking in at 24:33. Although most participants were from Guthrie County, results show finishers from Chicago and New York. Bump said fun was enjoyed by all, and participants had a healthy start to the day, prior to Thanksgiving feasting. ■



Participants gather at the starting line.



Nolan and Heidi Clark, and their children Graham and Norah, participate in the Turkey Trot on Thanksgiving Day.



Jonah Niedermeier races to the finish line in the Reshape 5K Turkey Trot.

HAPPY HOLIDAYS FROM COUNTY HEALTH SERVICES!

MENTAL HEALTH



Taking care of your mental health is taking care of others! We provide professional therapy services.



STAY UP TO DATE
VACCINATE



HEALTHY HOLIDAY TIPS

- Eat healthy
- Stay active
- Stay up to date on your vaccinations
- Rest well
- Take care of Body and mind



HOME HEALTH



Care you can rely on! Call us today for all your home health needs. We provide professional Nursing, Health Aide, Homemaker and in home Therapy Services

ENVIRONMENTAL HEALTH

We offer a wide range of water quality services from well water testing to septic system inspections and commercial pool testing.

PUBLIC HEALTH

We provide a wide range of services from immunizations to family and community health programs. Our resource navigators can help you find and access the health services you need!



CALL US TODAY 641-747-3972

We've got you covered for all your vaccine needs!

Guthrie County Public Health provides eligible services regardless of ability to pay

COVER CROPS HELP PROTECT LAKE PANORAMA

Three farmers near Yale participated in a 2022 trial program to fund the use of cover crops on row-crop land in the Lake Panorama watershed.

BY SUSAN THOMPSON
Lake Panorama Times

Since 1998, the Lake Panorama Rural Improvement Zone (RIZ) has made it possible for Lake Panorama home and lot owners to use a portion of their property tax dollars to fund erosion control and water quality efforts. RIZ funds an annual dredging program that removes silt from Lake Panorama and portions of the Middle Raccoon River north of the lake.

In recent years, some RIZ funds also have been used to slow the flow of sediment into the lake. Three wetlands on streams that lead into Lake Panorama are in place to help protect water quality, and two more wetlands are in the planning stages.

In late summer 2022, Tamara Deal, a Lake Panorama resident, made a presentation to the RIZ board of trustees about the potential impact the use of cover crops on farmland upstream could have on the lake's water quality. Deal had studied the

use of cover crops as a way to improve soil health and profitability on her family's farm. That led to her becoming an advocate for cover crops and making presentations to groups about the link between soil health and improved water quality.

Following her presentation, the RIZ board did some additional research. The result was a one-year trial program to fund the use of cover crops on row-crop land in the Lake Panorama watershed. Three farmers near Yale participated in that 2022 trial. This fall, the Lake Panorama RIZ Cover Crop Program is open to all producers who have row-crop land in Guthrie County that is within the Lake Panorama watershed.

Cover crops are grown in addition to primary cash crops such as corn and soybean. Cover crops can reduce soil erosion, increase soil organic matter and fertility, improve soil structure and promote water infiltration.

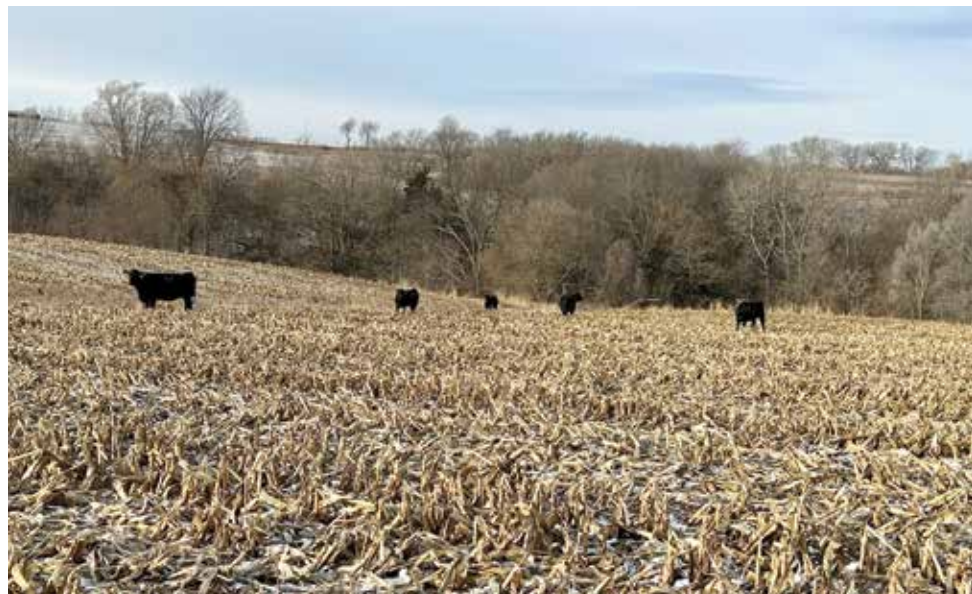
Aerial seeding of cover crops can be done with airplanes or helicopters, either before or after the cash crop is harvested. Another option is to use a drill to plant seed directly into the ground. Cover crops protect the soil in the late fall, winter and early spring.

Lane Rumelhart is the Lake Panorama Association (LPA) project manager and oversees the RIZ cover crop program.

"Lots of farmers have been flying it on, so they aren't running over their crop right before harvest," he says. "This gets them better germination and a longer growing season."

Producers enrolling in the program must commit at least 25 acres to cover crops and have those acres verified as meeting all other requirements. The RIZ program reimburses producers up to \$15 per acre for cover crops.

It can cost up to \$40 per acre to plant a cover crop. There are both Iowa and federal programs that offer farmers financial in-



Besides slowing erosion, Randy Glade likes planting a fall cover crop to provide fall and winter grazing for his cattle. The combination of harvest residue and rye cover crop will keep soil in place on this ground through the winter and spring.

centives for planting cover crops and other water quality and conservation efforts. Farmers enrolled in the RIZ program also can participate in these other cost share programs.

"Cover crops are good for Lake Panorama because they hold soil in place in late winter and early spring so there is less silt runoff," Rumelhart says. "Cover crops help keep nutrients in farm fields rather than allowing those to escape and lead to water quality problems, such as blue green algae blooms. The idea is that with more cover crops upstream, Lake Panorama will slowly gain improved water quality."

Dave Deardorff of Yale is one of the three producers who participated in the RIZ trial program in 2022. He is a member of the Guthrie County Soil and Water Conservation District Commission and has been planting cover crops on 240 tillable acres for the last seven years. He enrolled those 240 acres in the RIZ cover crop program both last year and again this year.

"This gives some additional coverage to the ground," Deardorff says. "I've been using no-till for more than 25 years, which keeps soil in place. Adding a cover crop helps reduce overall soil and wind erosion. I see more people in our area using no-till

or minimum tillage. This, along with a cover crop, is one of the best ways to conserve the soil."

Deardorff uses aerial seeding of rye for his cover crop.

"Last year we didn't have enough moisture to get a good stand, but this fall was better," he says. "We got a good stand, and I've been able to graze my cows this fall. Often rye will green back up in the spring and give another chance to graze cattle before row crops are planted."

Brothers Kevin and Kendall Kipp of Yale also participated in the 2022 trial program and enrolled the same acres in the RIZ cost share program this fall. Kendall says there wasn't enough soil moisture last year to get a good stand, but this year was different.

"We had it flown on right after Labor Day and then got some good rain," he says. "By the time harvest happened, there was probably 4 inches of growth. It's pretty even, and we have been able to graze our cattle on it this fall."

Lake Panorama RIZ owns 235 acres of tillable ground. In 2022, the Kipp brothers leased that ground on a one-year contract. This year, a half-dozen bidders vied for the chance to rent the RIZ ground. Heidi Kipp, the 20-year-old daughter of Kendall and



Randy Glade has been planting cover crops for more than 15 years. This year he doubled the number of acres for a total of 111. Rye seed was aerially applied into standing corn. Once harvest was complete, the rye was growing and can be seen here amongst the corn stalk residue.

Teresa Kipp, was awarded a three-year farm lease for the RIZ ground.

"My brother, Walker, is 25. We both were born and raised on the farm and have helped any way we could since we could walk," Heidi says. "This is my first year having land of my own to farm."

One requirement of the three-year lease is that all the RIZ tillable acres be protected by a cover crop.

"I'm interested to see how the cover crops work," Heidi says. "I think erosion control and improvements to soil health are two important factors, and I hope to see improved yields in the future. There are 45 acres of fenced land, so being able to graze cattle is another benefit for me. I think the RIZ program will result in improved water quality."

Keith Buttler has owned and operated Buttler Agronomy Services in Guthrie Center for 30 years. He provides agricultural inputs, services and recommendations to area farmers. He uses cover crops on his own farm and applies what he has learned to help others.

"I started it more as an erosion control tool. I have some land with steeper slopes, where a hard rain can cause a lot of erosion," Buttler says. "I've always used no-till but added the cover crops 14 years ago. The practice slows erosion, helps capture nutrients in the soil, increases biological activity, and soil health steadily improves each year. On my farm, yields have improved 15-20% because of the combination of both cover crops and improved genetics."

Buttler can help producers arrange seeding either into standing crops with an airplane, or after harvest with grain drills.

"Most farmers use rye," he says. "It's winter hardy, so it can go dormant in the winter, then grow again in the spring."

Buttler says incentives such as the RIZ cover crop program make a difference.

"This year I've had three times the amount of people putting in cover crops than last year," he says. "I think the early harvest caused by drought conditions encouraged some to give it a try, plus there are several cost share programs."

Randy Glade's farm operation is on both sides of Redwood Road just west of Lake Panorama. He's been using no-till for more than 30 years and planting cover crops after harvest for more than 15 years.

Most research shows after three continuous years of cover crops, farmers will see better yields, and that's been the case for Glade. Over time, his soybean yield has increased nine to 12 bushels per acre and his corn yield more than 25 bushels an acre by not tilling his farm ground and planting cover crops.

This year, Glade doubled the number of acres where he planted a cover crop for a total of 111 acres. He enrolled in the RIZ cover crop program and is pleased with this year's results. Iowa Cover Crop of Jefferson aerial applied rye into standing corn on his farm Sept. 15.

"The timing was excellent because, over the next three days, we had a half-inch of rain. That helped get a better than average stand," he says. "This has provided good grazing pasture for my feeder cattle."

"The combination of cover crops and no-till results in looser planting-depth soil, which leads to better soil-to-seed contact," Glade says. "I also get better water infiltration, which allows the soil to catch and hold more rain."

By early December, there were 10 producers with 1,279 acres approved for funding as part of the 2023 Lake Panorama RIZ Cover Crop Program. It's expected additional participants will be approved in December. For more information, contact Lane Rumelhart by calling the LPA office at 641-755-2301 or email him at lrumelhart@lakepanorama.org. ■



This field near the Guthrie County Fairgrounds is farmed by Lance Hansen. While Hansen couldn't participate in the RIZ cost share program because his land isn't in Lake Panorama's watershed, this is a good example of an effective cover crop. Hansen's nephew, Keith Buttler, owns and operates Buttler Agronomy Services in Guthrie Center and says this field had rye seed applied by plane right after the soybean crop was harvested in October.



This is the second year for members of the Kipp family near Yale to plant cover crops. Oat seed was spread by an airplane after Labor Day, and benefited from some timely rains. By the time the row crops were harvested, there was good growth.



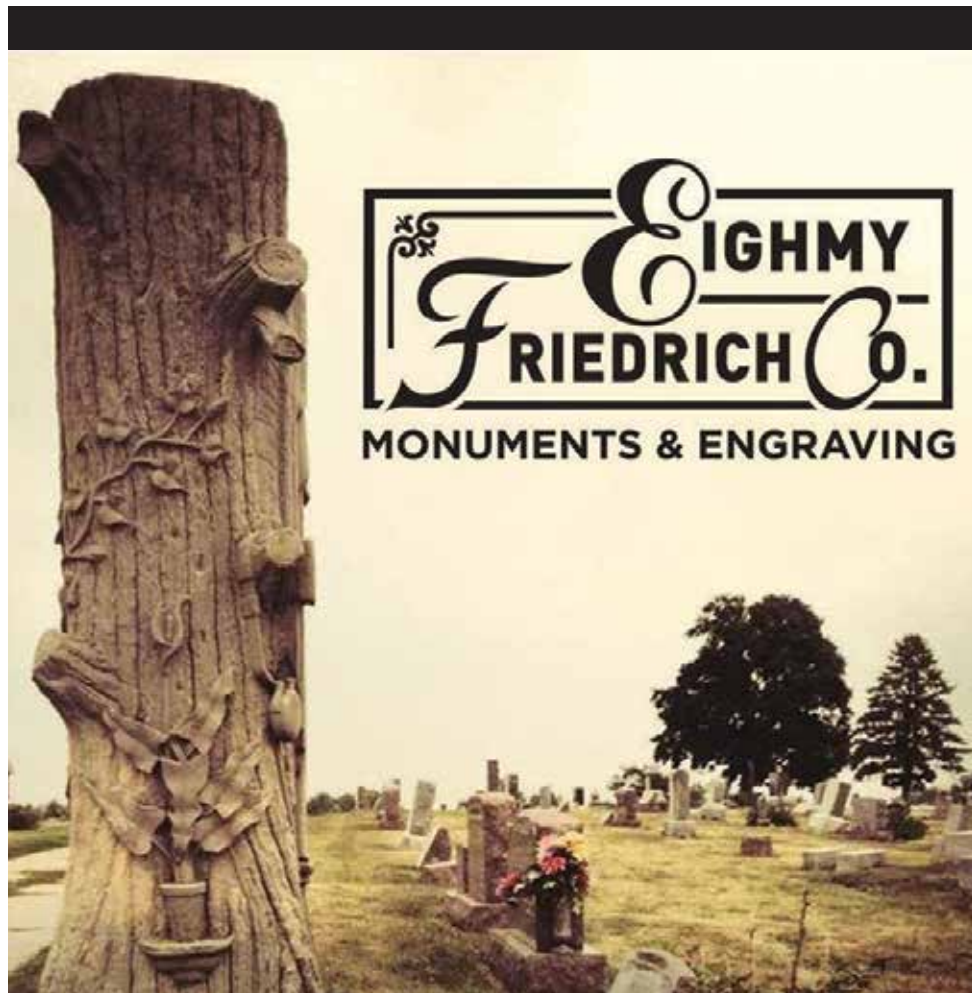
The field beyond the fence in this photo is part of the Kipp family farm operation. Rain after planting led to a strong stand of oats that will protect this field from water and wind erosion. The cover crop also provided an opportunity for the Kipps to graze their cattle this fall.

Thank you to everyone for the blessing of your business since 1956 and for making our open house such a great success!

David & Ilene Olson

Flowers by Panorama Gardens

3055 Hwy 44, Panora | 641-755-2225



**EIGHMY
FRIEDRICH CO.**
MONUMENTS & ENGRAVING

Artistry in Granite



800-305-3110  **@Eighmymonument**
Mount Ayr 404 South Lincoln - Guthrie Center 101 State Street
Guthrie Location: Wednesdays 9-3 or call for an appointment!

TRISH HART'S NATURE PHOTOS



BLUE JAYS APPRECIATE WINTER FEEDERS

BY SUSAN THOMPSON
Lake Panorama Times

Blue Jays are found year-round at Lake Panorama. Photographer Trish Hart, who lives with her husband, Scott, in a home on Andrew's Cove, says Blue Jay numbers at their feeders increase in the winter.

"We feed them a mixture of black oil sunflower seeds, fruit and nut wild bird seed, and peanuts," Trish says.

These large songbirds are present from Florida to southern Canada and as far west as Montana. They thrive in a variety of habitats but prefer wooded edges and oaks. Their fondness for acorns is credited with helping spread oak trees after the last glacial period.

Blue Jays have brightly colored plumage of blue, white and black. The black bridle across the face, nape and throat varies and may help these birds recognize one another.

Blue Jays are known for their intelligence. They are monogamous, and pairs may stay together for life. Nesting occurs during spring or early summer, and young jays fledge about three weeks after they hatch. The Harts enjoy seeing the same Blue Jay couples and their babies each year.

The Blue Jay frequently mimics the calls

of hawks. These calls may provide information to other jays that a hawk is around. Or a Blue Jay may be trying to trick other birds into believing a hawk is nearby to clear out a birdfeeder for itself.

Hart offers custom prints of her photos on canvas, paper, metal and glass. Learn more by visiting Nature's Canvas Photography on Facebook. ■



BEFORE



AFTER



HIRE A SPECIALIST
TO BUILD YOUR

DREAM BATH

SHOWER & BATH REPLACEMENT

COMPLETE BATHROOM REMODEL

TUB TO SHOWER CONVERSION

LAVATORIES & VANITIES



515.344.4144 | nexgenbaths@gmail.com

VIEW OUR GALLERY: nexgenbaths.com

Based in central Iowa,
serving your local community.



*Wishing you a very
merry holiday season!*



*Thanks for your support in 2023.
We look forward working with you
in 2024. Your Perfect Dock Awaits!*

WWW.DELUXEDOCKSANDLIFTS.COM



DELUXE DOCKS & LIFTS

DELUXE DOCKS & LIFTS
PANORA, IA

515-612-6467

DELUXEDOCKS@GMAIL.COM

LAKE DOG

BY CHERYL TEMPLE | *Lake Panorama Times*



Name: Breaker
Age: 11.5 years old
Breed: German Shorthair Pointer

Breaker adopted Denny and Ruth Rowed-

der as his humans. He came to live at the lake in 2013 from Great Plains Pointer Rescue. Breaker enjoys greeting the neighborhood kids on walks, sleeping in the sun and, especially, playing ball at the dog park. ■

Give the gift of a clean car at a
Discounted Price!



THE MORE YOU BUY,
THE MORE YOU SAVE!

**\$100
CARD**
For \$80

**\$75
CARD**
For \$60

**\$50
CARD**
For \$40

**\$25
CARD**
For \$20

Purchase with cash or credit/debit card. Cards are good at both locations for automatic or self-serve.

Purchase gift cards at the change machine at the 601 W Main location.

ALL SEASONS CAR WASH

ALWAYS OPEN

Remember our Value Cards are always available at our change dispensing machine.

601 W. MAIN STREET AND 302 E. MAIN STREET, PANORA

COVE CAT

BY CHERYL TEMPLE | Lake Panorama Times

Name: Quentin
Age: Almost a year old
Available for adoption at:
Panora Pets

Quentin is healthy, happy and just a general joy from the first moment he came in to Panora Pets. He is easy-going and so charismatic that you'll stop whatever you are doing just to engage with him. Quentin gets along well with the other kitties, and nothing seems to phase the kid. Quentin should be an excellent addition to any home and family, even the most active. He is neutered, vaccinated and microchipped. Adoption fees are \$25 throughout the month of December. Visit www.panorapets.com to fill out an application and view all of the profiles. ■






BluGrade
Earthworks, Inc.





Land Clearing
Retaining Walls
Shoreline Restoration

www.bgearthworks.com




Happy Holidays!
*From our family to yours,
we thank you for your
Business*





Looking for colorful permanent year round
lighting to decorate your property?
Contact us to learn more



Wood Duck
LANDSCAPES
Beautiful Outdoor Environments


Now booking for spring 2024

JOSH@WOODDUCKLANDSCAPES.COM

515-661-3208

WOODDUCKLANDSCAPES.COM

www.lakepanoramatimes.com

LAKE PANORAMA TIMES 

DECEMBER 2023 | PAGE 43

RECIPE

GRILLED HONEY-HERB PORK LOIN

BY JOLENE GOODMAN
Lake Panorama Times

We like to surround ourselves with good friends who are also good cooks.

We moved to our current home at Lake Panorama a few years ago. We love our place, and we love our neighbors. And, as with many of you, these great neighbors have become great friends. These are people we can borrow an egg from, share treats with, and call to close the garage door when we've forgotten. They collect the patio umbrella that blows off our deck and put it back, maybe telling us of the good deed another time. We have dinner together. We share recipes. We drink good wine. Simply said, we enjoy our time together and make long-lasting memories.

Recently, Paula and Lyle Hansen invited us over for dinner. Paula keeps food simple with incredible flavors. Her menu included pork tenderloin, roasted vegetables and homemade bread (a recipe for a later column). There is nothing quite as easy or delicious as grilled pork tenderloin. This dry rub and glaze is simple enough for a week-end meal or fancy enough for company.

Thanks for sharing your recipe, Paula. ■

Jolene Goodman is the advertising director for Lake Panorama Times and vice president of Big Green Umbrella Media.



Jolene Goodman

GRILLED HONEY-HERB PORK LOIN

- 1-1.5 pounds pork tenderloin
- 1 tsp. sweet paprika
- 1 tsp. garlic powder
- 1/2 tsp. onion powder
- 1/2 tsp. dried thyme
- pepper
- Honey glaze
- 4 cloves garlic minced
- 1/4 cup honey
- 3 TBSP low sodium soy
- 1 TBSP Dijon mustard
- 1 TBSP olive oil

Pat pork dry with a paper towel. Mix together sweet paprika, garlic powder, onion powder, dried thyme and pepper. Rub mixture all over pork tenderloin. Place pork in a zip lock bag and place in refrigerator for several hours, up to overnight. Preheat grill to medium-high heat or 425 degrees using half of the burners. Prepare honey glaze by mixing ingredients. Sear the tenderloin on the lit grill side for 5-6 minutes on one side with the grill lid closed. Turn it over and sear



the other side for 4-5 minutes with the grill lid closed. Then, move the tenderloin to the unlit side (using indirect heat). Baste with honey glaze every so often. Continue cooking until the tenderloin reaches an internal temperature of 145 degrees. Continue basting throughout the cooking time. Let meat rest on a plate covered loosely with an aluminum foil tent for 10-15 minutes before slicing. Enjoy! ■

CERTAINTY SELECT®



Contact me to learn more.




Kevin Wingert
515-274-9190

Investment Adviser Representative of and investment adviser services offered through Royal Fund Management, LLC a SEC Registered Investment Adviser.

Certainty Select offers predictable growth to help you accumulate savings for the future.

Lock in a great rate today, and earn tax-deferred interest for your selected guarantee period.

3-year: 5.50%	8-year: 5.90%
5-year: 5.75%	10-year: 6.00%
6-year: 5.80%	



Rates are based on the Company's 11/19/2023 declared interest rate for the Single Premium Deferred Annuity (Certainty Select Annuity). The initial rate guarantee period is 3, 5, 6, 8 or 10 years, which you choose. Initial rate subject to change. Surrender charges are in effect for partial withdrawals in excess of the Free Withdrawal Amount or a full surrender before the end of the Guarantee Period. Surrender charges are a percentage of the Accumulation Value, and decline annually: 10, 10, 9, 9, 8, 8, 7, 7, 6, 5%. The Surrender Charge period matches the Guarantee Period. Surrender charges may vary by state. Product features may vary by state. IRAs/qualified plans are already tax deferred; consider other annuity features. EquiTrust Life Insurance Company cannot give legal, tax or accounting advice. Your personal tax advisor can provide important information with respect to the purchase of this annuity contract and its taxation. Contract Form Series ET-MYG-2000(06-09) or ICC13-ETMYG-2000(07-13). Group Certificates issued on Form Series ET-MYG-2000C(06-09). EquiTrust does not offer investment advice to any individual and this material should not be construed as investment advice. EquiTrust Life Insurance Company, West Des Moines, IA.

ET-CTY-AD-CONS (11-23)

© EquiTrust 2023. All Rights Reserved.

PAGE 44 | DECEMBER 2023

LAKE PANORAMA TIMES

www.lakepanoramatimes.com

Holiday Gift Giving made easy!

We appreciate
you, and thank
you for your
business in
2023!



DOWD DRUG



HealthMart
PHARMACY



GET YOUR FLU SHOT TODAY

Simply walk in to get a flu shot.
No cost with most insurance.

We do Medicare Part D reviews. Call for an appointment.

307 State St, Guthrie Center

641-747-8317 M-F 8AM-6PM | SA 9AM-4PM | SU Closed



AREA CHURCH GUIDE

► SUBMIT CHANGES OR UPDATES AT WWW.LAKEPANORAMATIMES.COM OR EMAIL SHANE@DMCITYVIEW.COM

BAGLEY

Bagley United Methodist Church

401 Main St., P.O. Box 40, Bagley

www.umc.org

Christmas Eve Service – 6:30 p.m.

– No regular Sunday morning service

BAYARD

Bayard United Methodist Church

500 Third St., Bayard

www.umc.org

712-651-2307

St. Patrick Catholic Church

124 Prairie St., Bayard

st-mary-patrick-cecilia.com

641-747-3843

GUTHRIE CENTER

Bowman Chapel United Methodist Church

2397 Bowman Ave., Guthrie Center

641-332-2408

Christmas Eve Candlelight Service: 4:30 p.m.

First Christian Church

105 N. Fourth St., Guthrie Center

www.christianchurchgc.com

641-332-2571

First United Methodist Church

405 Prairie St., Guthrie Center

www.gcumcia.org

641-332-2408

Christmas Eve Candlelight Service: 7 p.m.

First Presbyterian Church

701 State St., Guthrie Center

641-332-2425

Christmas Eve Service – 7 p.m.

Guthrie Center First Baptist Church

113 N. Fifth St., Guthrie Center

www.guthriecenterbaptist.com

641-747-8198

Guthrie Center Seventh-day Adventist Church

1305 North St., Guthrie Center

www.guthriecentersda.com

641-322-2778

Immanuel Lutheran Church

713 N. 12th St. Guthrie Center

<http://www.immanuelgc.org>

641-332-2918

Christmas Eve Candlelight Service – 9 p.m.

– No regular Sunday morning service

Kingdom Hall of Jehovah's Witnesses

1300 Grand St., Guthrie Center

www.jw.org

515-747-8524

Saint Mary Catholic Church

603 Main St., Guthrie Center

st-mary-patrick-cecilia.com

641-747-3843

Christmas Eve Mass – 7 p.m.

PANORA

Calvary Chapel of the

Raccoon River Valley

604 E. Main St., Panora

calvaryraccoon.com

641-755-4268

Church of the Brethren

2946 200th Road, Panora

641-755-3800

Faith Bible Church

2096 Highway 4, Panora

www.fbcpanora.com

641-755-3034

Christmas Eve Service – 5 p.m.

First Christian Church

102 E. Church St., Panora

www.panorafcc.org

641-755-2227

Fountain Of Life Church

2322 Wagon Road, Panora

www.FOLCPanora.com

641-755-2322

Lighthouse Assembly of God Church

400 S.E. Third St., Panora

www.panoralighthouseassemblyofgod.com

641-755-3060

Christmas Service – 9 a.m.

Lutheran Church of Hope

5405 Chimra Road, Panora

515-222-1520

Live painter Renae Zanella – 9 a.m.

Saint Thomas Lutheran Church

2100 N. Highway 4, Panora

641-755-2051

Christmas Eve Candlelight Service - 7 p.m.

– No regular Sunday morning service

St. Cecilia Catholic Church

220 N. First St., Panora

st-mary-patrick-cecilia.com

641-747-3843

Christmas Eve Mass – 5:30 p.m.

Christmas Day Mass – 9 a.m.

United Methodist Church

119 E. Main St., Panora

panoraumc.org

641-755-2655

Christmas Eve Service 6 p.m. ■

GET WITH THE TIMES!

Your complete print and digital network of publications for news, information and advertising in Guthrie County.

Welcome to our family of Times publications delivered for FREE to every household and business in Panora, Linden, Yale, Jamaica, Bagley, Guthrie Center, Adair, Casey and all property owners at Lake Panorama every month. Local news and features on the people, places and events of the area in full-color, magazine format publications.



111 E. Main St., Panora

641-755-2115

www.biggreenumbrellamedia.com



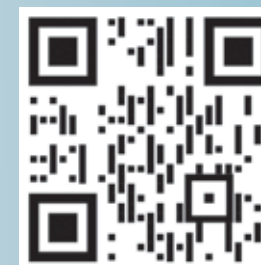
panoratimes.com



guthriecentertimes.com



lakepanoramatimes.com





JRL BUILDERS

CUSTOM HOMES | IOWA

Locally owned, full-service construction company with more than 20 years experience in real estate and construction!



NEW CONSTRUCTION | ADDITIONS | REMODELS
KITCHENS | BASEMENT FINISHES/RENOVATIONS



GIVE US A CALL TODAY TO DISCUSS YOUR PROJECT!

515-370-5853 | luke@jrlbuildersia.com | www.jrlbuildersia.com

Follow completed and in-progress projects at www.facebook.com/JRLBuildersIA

Shop for GROCERIES LOCALLY

OUR MEAT IS *Fresh & Affordable!*



We have a wide selection of beef, pork and chicken. Our meat is fresh and our prices are great.



We handle large orders for family gatherings and get togethers.

ORDER AHEAD FOR PARTY TRAYS!

*Merry Christmas from the
Hometown Foods family to your family.*



THANK YOU for your business!

Hometown

601 E. Main St., Panora • (641) 755-2213
Open Monday-Saturday 7-9, Sunday 8-8

200 State St., Guthrie Center • (641) 747-2291
Open Monday-Saturday 7-8, Sunday 7-7

foods

COMMUNITY

TEN SQUARED WOMEN OF GUTHRIE COUNTY GROWS TO MORE THAN 135 MEMBERS

Group formed in 2017 after accepting a challenge by 10 Squared Men of Guthrie County organizer Barry Monaghan.

BY RICH WICKS
Lake Panorama Times

The 10 Squared Women of Guthrie County group proves that whatever men can do, women can also do.

Member Kristen Crouthamel shared details on how the group formed and how it functions.

She said both the men's and women's groups share the same basic gameplan. Members meet several times per year, donating \$100 each at each meeting, and vote on a local charitable group to be the recipient of the funds raised. The name "Ten Squared" indicates the goal to have at least 100 members and the \$100 donation each member gives per meeting.

Crouthamel recalled that shortly after the Ten Squared men's group began, Barry Monaghan put out a local challenge, asking area women to form a similar group.

"I think we started in 2017," she said. "The ringleader was originally Shannon Neff-Muell. She worked at the bank, and she came to a few of us and asked us to accept Barry's challenge."

Describing the functioning of the group, Crouthamel said, "We've always kind of hovered around 100 members, but

in the last two or three quarters, we've gained at least 35 new members. We meet four times a year, and the men meet three times a year, so it ends up being about an equal amount of money being given out over the year."

Crouthamel says another difference is the women's group allows members to join the meetings via Zoom. She said this is helpful for members who are busy with other commitments such as work and childcare.

According to Crouthamel, each member is welcome to nominate local charitable groups to be considered as a recipient of funds. Currently, the women's group has more than 20 community groups "in the hat," and three are randomly drawn at each meeting to be voted on. The top vote-getter then receives the entire amount raised at that meeting.

"If a group has gotten money from Ten Squared Women, they have to wait two years to be eligible again," she noted.

As with the men's group, Ten Squared Women gives 100% of the funds directly to the recipients. Crouthamel said the only "overhead" was when the group formed and purchased the large novelty check that is used in photos of the funds being given to recipients.

Crouthamel welcomes any women in the area to join Ten Squared if interested. To learn more, individuals can visit their Facebook page or email them at 10squaredgc@gmail.com. ■



Kristen Crouthamel

**Advertising tailored to
your small business!**
Contact **Kerry Jacobsen** today!
kerry@iowalivingmagazines.com or 515-619-2788

WHERE IS IT?



LAST MONTH'S PHOTO



The image from last month's "Where Is It?" is a two-story dock located at 7073 Andrews Terrace. This cantilever dock was built by a bridge manufacturer out of Atlantic. Believe it or not, Mike Hayden had the first correct answer! Have a guess on where this month's image is located? Have a photo to submit for future issues? Send to shane@dmcityview.com. ■



Adair Guthrie Center Panora Stuart
641-742-1000 641-332-3900 641-755-4000 515-523-8050

Wishing you a safe & happy holiday season!



Austin Boeckman, DO
Family Medicine
GCH Clinics-Guthrie Center



Eric Jones, DO
Family Medicine
GCH Clinics-Stuart



Cody Silker, DO
Pediatrics
GCH Clinics-Stuart



Josh Strehle, DO
Family Medicine
GCH Clinics-Panora



Regina Barnett, ARNP
Family Medicine
GCH Clinics-Adair



Sabra Miller, ARNP
Family Medicine
GCH Clinics-Stuart



Lindy Nordstrom, ARNP
Family Medicine
GCH Clinics-Panora



Sara Van Effen, ARNP
Family Medicine
GCH Clinics-Panora

Serving Guthrie County in the following locations:
ADAIR, GUTHRIE CENTER, PANORA & STUART

Rick Titus in his **48th** year of selling and installing more efficient fireplace inserts and vent free gas logs!



- photo by Les Houser, Wright Couty Monitor

If you have a fireplace that burns wood, you know that it loses all of its heat up the chimney. Rick Titus has a wood burning insert that will burn with the efficiency of a wood stove and fit inside your fireplace so it keeps your fireplace look.

If you have a gas log in your fireplace it also sends all of its heat up the chimney. Rick has Vent Free gas logs that can burn as efficient as a gas cook stove and burn with the damper closed, thus keeping all the heat in the house.

If you have one of the newer gas fireplaces that vents out the side of the home or up a chimney, Rick can convert it over to a Vent Free log and keep all the heat in the home.

So no matter what kind of fireplace you may have, Rick has an efficient solution for it. Call Rick or email him at yahtitus@gmail.com or go to his web site below. Rick even has new fireplaces and woodstoves that can heat your home even during a power outage.

Call Rick at 515-532-3881 or 515-293-2455 or visit www.fireplacesatthecountrystore.com

FRESH MEAT COUNTER & RETAIL STORE

MIDWEST MADE & PRODUCED PRODUCTS

**YOU DON'T HAVE TO LEAVE
YOUR HOME!**

Shop Online!



Scan to view our
entire list of Midwest
made and produced
products.

We deliver straight
to your home.

*The holidays
are coming up!*

Prepare and get your
hams and turkeys
from us.



**1507 State St.,
Guthrie Center**

www.gcqualitymeats.com

Monday - Wednesday 8AM - 5PM
Thursday 8AM - 6PM
Friday 8AM - 5:30PM
Saturday 9AM - 3PM

CLASSIFIED ADVERTISING

SUBMIT FREE CLASSIFIEDS AT WWW.LAKEPANORAMATIMES.COM.

DISCLAIMER: This publication does not knowingly accept advertising that is deceptive, fraudulent, or which might otherwise violate the law or accepted standards of taste. However, this publication does not warrant or guarantee the accuracy of any advertisement, or the quality of the goods or services advertised. Readers are cautioned to thoroughly investigate all claims made in any advertisement and to use good judgment and reasonable care, particularly when dealing with persons unknown to you who ask for money in advance of delivery of the goods or services advertised.

FOR SALE

2023 MANUFACTURED HOMES, (14x60) 2Br, \$39,999. (16x80) (3Br- 2Ba.) \$59,999. (24 x 44) (3Br - 2Ba) \$66,999. 1680 Sq. Ft., (4Br-2Ba) \$79,999. Delivered Factory-Direct, E. Of I-35, North/I-80, to Minnesota Border. 319-239-1920. (mcn)

WANT TO BUY

WANT TO BUY your manufactured or mobile home 1990 and newer CENTURY HOMES of OSKALOOSA 641-672-2344(mcn)

AUCTIONS

WRIGHTZ AUCTION CO. "Your Locally Owned, Full-Service Auction Company" SPORT & REC CONSIGNMENT SALE, SATURDAY, MAY 6TH, 2023 9 AM. CALL TO CONSIGN TODAY! 641-398-2218, Hwy 218, Floyd, IA. www.wrightzauctionco.com (mcn)

AUTOMOBILES

CASH FOR CARS! We buy all cars! Junk, high-end, totaled – it doesn't matter! Get free towing and same day cash! NEWER MODELS too! Call 1-877-978-2510. (mcn)
DONATE YOUR CAR TO CHARITY. Receive maximum value of write off for your taxes. Running or not! All conditions accepted. Free pickup. Call for details. 855-752-6680 (mcn)
Donating your vehicle? Get more! Free Towing. Tax Deductible. Plus a \$200 restaurant voucher and a 2-night/3-day hotel stay at one of 50 locations. Call Heritage for the Blind to donate your vehicle today - 1-855-977-7030. (mcn)

BUSINESS OPPORTUNITIES

How I'm making money at home mailing simple easy flyers, now you can to! Send SASE to: Flyers 27920 Wentworth Drive Roseville, Michigan 48066. (mcn)
Make money from your kitchen table by simply mailing proven-to-work postcards. All sales are done for you. No online marketing necessary, no experience needed. www.leverage-income.com. (mcn)

leverage-income.com.(mcn)
BURNED OUT??? Build lifetime streams of income. Exit the rat race forever! Free Report! www.leverage-income.com. (mcn)

CABLE/INTERNET

FREE high-speed internet for those that qualify. Government program for recipients of select programs incl. Medicaid, SNAP, Housing Assistance, WIC, Veterans Pension, Survivor Benefits, Lifeline, Tribal. 15 GB internet service. Bonus offer: Android tablet FREE with one-time \$20 copay. Free shipping & handling. Call Maxsip Telecom today! 1-866-443-3789. (mcn)
BEST SATELLITE TV with 2 Year Price Guarantee! \$59.99/mo with 190 channels and 3 months free premium movie channels! Free next day installation! Call 855-824-1258. (mcn)
DirecTV Satellite TV Service Starting at \$74.99/month! Free Installation! 160+ channels available. Call Now to Get the Most Sports & Entertainment on TV! 844-558-1767 (mcn)
DISH Network. \$64.99 for 190 Channels! Blazing Fast Internet, \$19.99/mo. (where available.) Switch & Get a FREE \$100 Visa Gift Card. FREE Voice Remote. FREE HD DVR. FREE Streaming on ALL Devices. Call today! 1-855-434-0020 (mcn)
DIRECTV. New 2-Year Price Guarantee. The most live MLB games this season, 200+ channels and over 45,000 on-demand titles. \$84.99/mo for 24 months with CHOICE Package. Some restrictions apply. Call DIRECTV 1-866-296-1409. (mcn)

Connect to the best wireless home internet with EarthLink. Enjoy speeds from 5G and 4G LTE networks, no contracts, easy installation, and data plans up to 300 GB. Call 844-878-2209. (mcn)
Dish Network: Only from Dish- 3-year TV Price Guarantee! 99% Signal Reliability, backed by guarantee. Includes Multi-Sport with NFL Redzone. Switch and Get a FREE \$100 Gift Card. Call today! 1-855-434-0020. (mcn)

EMPLOYMENT/HELP WANTED

Worthing SD is hiring a full-time Utility Maintenance person with full benefits. Responsibilities include working in the city's water, sewer, streets, and park departments. Information can be found at www.cityofworthing.com.(mcn)

FINANCIAL

The COVID crisis has cost us all something. Many have lost jobs and financial security. Have \$10K In Debt? Credit Cards. Medical Bills. Car Loans. Call NATIONAL DEBT RELIEF! We can help! Get a FREE debt relief quote:

Call 1-866-552 -0649.(mcn)
\$250k LIFE INSURANCE. Cover the ENTIRE family for as little as \$39.00 a month. We have Final Expense, TERM, Universal Life and Guaranteed Issue Whole Life. Call Today for a FREE no-obligation Quote at 407-960-4782. (mcn)

HEALTH & MEDICAL

Portable Oxygen Concentrator May Be Covered by Medicare! Reclaim independence and mobility with the compact design and long-lasting battery of Inogen One. Free information kit! Call 844-716-2411. (mcn)
DENTAL INSURANCE from Physicians Mutual Insurance Company. Coverage for 350 plus procedures. Real dental insurance- NOT just a discount plan. Do not wait! Call now! Get your FREE Dental Information Kit with all the details! 1-855-973-9175 www.dental50plus.com/https://www.dental50plus.com/midwest#6258 (mcn)
Don't let the stairs limit your mobility! Discover the ideal solution for anyone who struggles on the stairs, is concerned about a fall or wants to regain access to their entire home. Call AmeriGlide today! 1-877-916-2093. (mcn)
Stroke and Cardiovascular disease are leading causes of death, according to the American Heart Association. Screenings can provide peace of mind or early detection! Contact Life Line Screening to schedule your screening. Special offer - 5 screenings for just \$149. Call 1-866-742-7290. (mcn)

HOME SERVICES

Vivint. Smart security. Professionally installed. One connected system for total peace of mind. FREE professional installation! Four FREE months of monitoring! Call now to customize your system. 1-855-962-5554. (mcn)

MISCELLANEOUS

DIAGNOSED WITH LUNG CANCER? You may qualify for a substantial cash award - even with smoking history. NO obligation! We've recovered millions. Let us help!! Call 24/7, 1-888-490-8260. (mcn)
BATH & SHOWER UPDATES in as little as ONE DAY! Affordable prices - No payments for 18 months! Lifetime warranty & professional installs. Senior & Military Discounts available. Call 1-866-585-7073. (mcn)
LONG DISTANCE MOVING: Call today for a FREE QUOTE from America's Most Trusted Interstate Movers. Let us take the stress out of moving! Speak to a Relocation Specialist, call 877-327-0795. (mcn)
BATHROOM RENOVATIONS. EASY, ONE DAY updates! We specialize in safe bathing. Grab bars, no slip flooring & seated showers. Call for a free

in-home consultation: 855-836-2250. (mcn)
NEED NEW FLOORING? Call Empire Today® to schedule a FREE in-home estimate on Carpeting & Flooring. Call Today! 844-785-0305 (mcn)
Never clean your gutters again! Affordable, professionally installed gutter guards protect your gutters and home from debris and leaves forever! For a FREE Quote call: 877-761-1449 (mcn)
The Generac PWRcell, a solar plus battery storage system. SAVE money, reduce your reliance on the grid, prepare for power outages and power your home. Full installation services available. \$0 Down Financing Option. Request a FREE, no obligation, quote today. Call 1-877-381-3059. (mcn)

Prepare for power outages today with a GENERAC home standby generator. \$0 Money Down + Low Monthly Payment Options. Request a FREE Quote. Call now before the next power outage: 1-877-228-5789 (mcn)

Eliminate gutter cleaning forever! LeafFilter, the most advanced debris-blocking gutter protection. Schedule a FREE LeafFilter estimate today. 20% off Entire Purchase. Plus 10% Senior & Military Discounts. Call 1-855-577-1268. (mcn)
Become a Published Author. We want to Read Your Book! Dorrance Publishing-Trusted by Authors Since 1920. Book manuscript submissions currently being reviewed. Comprehensive Services: Consultation, Production, Promotion and Distribution. Call for Your Free Author `s Guide 1-877-516-0706 or visit dorranceinfo.com/Midwest (mcn)

Wesley Financial Group, LLC Timeshare Cancellation Experts. Over \$50,000,000 in timeshare debt and fees cancelled in 2019. Get free informational package and learn how to get rid of your timeshare! Free consultations. Over 450 positive reviews. Call 877-326-1608. (mcn)
Trouble hearing your TV? Try TV EARS Voice Clarifying Wireless TV Speaker. Better than a soundbar and/or turning the TV volume way up. Special, limited time \$50 off offer. Call TV Ears. Use code MBSP50. Call 1-844-455-0505. (mcn)

Safe Step. North Americas #1 Walk-In Tub. Comprehensive lifetime warranty. Top-of-the-line installation and service. Now featuring our FREE shower package and \$1600 Off for a limited time! Call today! Financing available. Call Safe Step 1-844-290-5083. (mcn)
Switch and save up to \$250/year on your talk, text and data. No contract and no hidden fees. Unlimited talk and text with flexible data plans. Premium nationwide coverage. 100% U.S. based customer service. Limited time offer! Get \$50 off on any new account. Use code GIFT50. For more information, call 1-888-909-7338. (mcn)

Are you a pet owner? Do you want to get up to 100% back on Vet Bills? Physicians Mutual

Insurance Company has pet coverage that can help! Call 1-888-680-3016 to get a free quote or visit mfcp.com. (mcn)

WANT TO BUY

PAYING TOP CASH FOR MEN'S SPORT WATCHES! Rolex, Breitling, Omega, Patek Philippe, Heuer, Daytona, GMT, Submariner, Speedmaster. Call: 866-314-9742. (mcn)
TOP CASH PAID FOR OLD GUITARS! 1920-1980 Gibson, Martin, Fender, Gretsch, Epiphone, Guild, Mosrite, Rickenbacker, Prairie State, D'Angelico, Stromberg. And Gibson Mandolins / Banjos. 866-470-1643. (mcn)

HEALTH & FITNESS

VIAGRA and CIALIS USERS! 50 Generic Pills SPECIAL \$99.00. 100% guaranteed. 24/7 CALL NOW! 888-445-5928 Hablamos Español (ACP)
Dental insurance - Physicians Mutual Insurance Company. Covers 350 procedures. Real insurance - not a discount plan. Get your free dental info kit! 1-855-526-1060 www.dental50plus.com/ads#6258 (ACP)
Attention oxygen therapy users! Inogen One G4 is capable of full 24/7 oxygen delivery. Only 2.8 pounds. Free info kit. Call 877-929-9587 (ACP)

MISCELLANEOUS

Prepare for power outages today with a GENERAC home standby generator \$0 Down + Low Monthly Pmt Request a free Quote. Call before the next power outage: 1-855-948-6176 (ACP)
Eliminate gutter cleaning forever! LeafFilter, the most advanced debris-blocking gutter protection. Schedule free LeafFilter estimate today. 20% off Entire Purchase. 10% Senior & Military Discounts. Call 1-833-610-1936 (ACP)
BATH & SHOWER UPDATES in as little as ONE DAY! Affordable prices - No payments for 18 months! Lifetime warranty & professional installs. Senior & Military Discounts available. Call: 855-761-1725 (ACP)
Donate Your Car to Veterans Today! Help and Support our Veterans. Fast - FREE pick up. 100% tax deductible. Call 1-800-245-0398 (ACP)
HughesNet - Finally, super-fast internet no matter where you live. 25 Mbps just \$59.99/mo! Unlimited Data is Here. Stream Video. Bundle TV & Internet. Free Installation. Call 866-499-0141 (ACP)
Become a published author. We want to read your book! Dorrance Publishing trusted since 1920. Consultation, production, promotion & distribution. Call for free author's guide 1-877-729-4998 or visit dorranceinfo.com/ads (ACP)
DISH TV \$64.99 For 190 Channels + \$14.95 High Speed Internet. Free Installation, Smart HD DVR Included, Free Voice Remote. Some restrictions apply. Promo Expires 1/31/24.

1-866-479-1516 (ACP)
The Generac PWRcell solar plus battery storage system. Save money, reduce reliance on grid, prepare for outages & power your home. Full installation services. \$0 down financing option. Request free no obligation quote. 1-877-539-0299 (ACP)
Safe Step. North America's #1 Walk-in tub. Comprehensive lifetime warranty. Top-of-the-line installation and service. Now featuring our free shower package & \$1600 off - limited time! Financing available. 1-855-417-1306 (ACP)
Switch and save up to \$250/yr on talk, text & data. No contract or hidden fees. Unlimited talk & text with flexible data plans. Premium nationwide coverage. 100% U.S. based customer service. Limited time get \$50 off any new account. Use code GIFT50. 1-855-903-3048 (ACP)
MobileHelp, America's premier mobile medical alert system. Whether you're home or away. For safety & peace of mind. No long term contracts! Free brochure! 1-888-489-3936 (ACP)
Free high speed internet if qualified. Govt. pgm for recipients of select pgms incl. Medicaid, SNAP, Housing Assistance, WIC, Veterans Pension, Survivor Benefits, Lifeline, Tribal. 15 GB internet. Android tablet free w/one-time \$20 copay. Free shipping. Call Maxsip Telecom! 1-833-758-3892 (ACP)
Inflation is at 40 year highs. Interest rates are way up. Credit Cards. Medical Bills. Car Loans. Do you have \$10k or more in debt? Call National Debt Relief to find out how to pay off your debt for significantly less than what you owe! Free quote: 1-877-592-3616 (ACP)
Wesley Financial Group, LLC Timeshare Cancellation Experts Over \$50,000,000 in timeshare debt & fees cancelled in 2019. Get free info package & learn how to get rid of your timeshare! Free consultations. Over 450 positive reviews. 833-308-1971 (ACP)
DIRECTV Stream - Carries the most local MLB Games! Choice Package \$89.99/mo for 12 mos Stream on 20 devices at once. HBO Max included for 3 mos (w/Choice Package or higher.) No contract or hidden fees! Some restrictions apply. Call IVS 1-866-859-0405 (ACP)
Are you a pet owner? Do you want to get up to 100% back on vet bills? Physicians Mutual Insurance Company has pet coverage that can help! Call 1-844-774-0206 to get a free quote or visit insurebarkmeow.com/ads (ACP)
Unlimited wireless 4G LTE or 5G internet. Only \$50/month. 15-day trial. No contract. Includes hardware. Fast & reliable. 888-996-6799. <https://broadbandq.com> (ACP)
Diagnosed with lung cancer? You may qualify for a substantial cash award - even with smoking history. No obligation! We've recovered millions. Let us help!! Call 24/7, 1-877-648-2503 (ACP) ■



THERE IS NO PLACE LIKE GNOME!

Season's Greetings

WISHING YOU A HAPPY AND HEALTHY NEW YEAR!

FROM YOUR FRIENDS AT



Laura Kemble
Broker/Owner

Leslie Anderson
Transaction Coord/Office Admin

Angie Worth
Realtor/Owner

Dave Wagler
Broker Associate



📍 218 W. Main Street, Panora, IA 50216

☎ Office: 641.755.2377 🌐 sunsetrealtyia.com



Stay Connected!



This advertisement is not intended to solicit already listed properties. Licensed to sell real estate in Iowa.